



# **SAP S/4HANA Migration Cockpit**

## **Development News SAP S/4HANA Cloud 2108**

August, 2021

PUBLIC

# Disclaimer

The information in this presentation is confidential and proprietary to SAP and may not be disclosed without the permission of SAP. Except for your obligation to protect confidential information, this presentation is not subject to your license agreement or any other service or subscription agreement with SAP. SAP has no obligation to pursue any course of business outlined in this presentation or any related document, or to develop or release any functionality mentioned therein.

This presentation, or any related document and SAP's strategy and possible future developments, products and or platforms directions and functionality are all subject to change and may be changed by SAP at any time for any reason without notice. The information in this presentation is not a commitment, promise or legal obligation to deliver any material, code or functionality. This presentation is provided without a warranty of any kind, either express or implied, including but not limited to, the implied warranties of merchantability, fitness for a particular purpose, or non-infringement. This presentation is for informational purposes and may not be incorporated into a contract. SAP assumes no responsibility for errors or omissions in this presentation, except if such damages were caused by SAP's intentional or gross negligence.

All forward-looking statements are subject to various risks and uncertainties that could cause actual results to differ materially from expectations. Readers are cautioned not to place undue reliance on these forward-looking statements, which speak only as of their dates, and they should not be relied upon in making purchasing decisions.

# Agenda



- File/Staging
- Continuous Influence
- Content Updates
- Further Information

# **SAP S/4HANA migration cockpit**

## **File/Staging**





# SAP S/4HANA migration cockpit – migrate data using staging tables

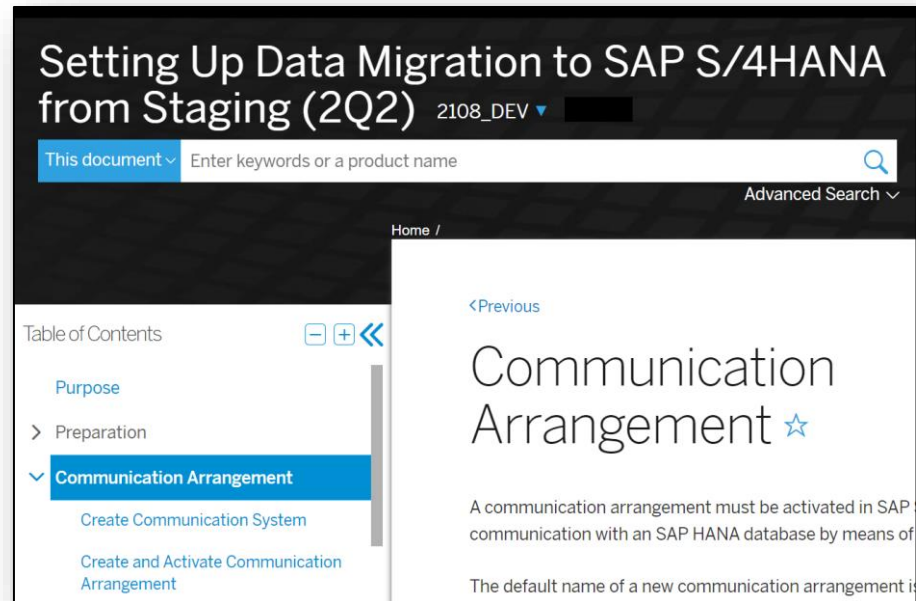
What's new with 2108?

- New communication arrangement to connect to SAP HANA Cloud
- Update of multiple objects



# SAP S/4HANA migration cockpit – migrate data using staging tables

New communication arrangement to connect to SAP HANA Cloud



The new communication arrangement is presented to facilitate the creation of the staging tables in SAP HANA Cloud

Find some more (draft) information on the SAP Help Portal:

[Data Migration to SAP S/4HANA from Staging](#)

[Setting Up Data Migration to SAP S/4HANA from Staging](#)



# SAP S/4HANA migration cockpit – migrate data using staging tables

## Update of multiple objects

Extended update functionality for migration objects:

- ability to update all relevant objects in parallel
- ability to select single objects for update

The screenshot displays the SAP Migration Project cockpit interface. The main view shows a table of migration objects with columns for Migration Object, Data, Mapping Tasks, Simulation, Migration, Migration Progress, and Action. The objects listed are CO - Activity type, CO - Cost center, CO - Profit center, and CO - Statistical key figure. The CO - Cost center and CO - Statistical key figure objects are marked as 'Update Required'. An 'Updates Available for Migration Objects' dialog box is overlaid on the screen, showing a list of selected objects for required updates: 'Select All(2)', 'CO - Statistical key figure', and 'CO - Cost center'. The dialog includes 'Update' and 'Cancel' buttons.

Migration Object	Data	Mapping Tasks	Simulation	Migration	Migration Progress	Action
<input type="checkbox"/> Migration Object	Tables: 1	Errors: 0	Errors: 0	Errors: 0	Migration Not Started	<input type="button" value="Upload File"/>
<input type="checkbox"/> CO - Activity type	Instances: 0	Open: 1 Done: 0	Successful: 0	Successful: 0 Not Started: 0	Migration Not Started	<input type="button" value="Upload File"/>
<input type="checkbox"/> CO - Cost center	Tables: 1 Instances: 0	Errors: 0 Open: 1 Done: 0			Migration Not Started	<input type="button" value="Upload File"/>
<input type="checkbox"/> CO - Profit center	Tables: 2 Instances: 0	Errors: 0 Open: 1 Done: 0			Migration Not Started	<input type="button" value="Upload File"/>
<input type="checkbox"/> CO - Statistical key figure	Tables: 1 Instances: 0	Errors: 0 Open: 1 Done: 0			Migration Not Started	<input type="button" value="Upload File"/>

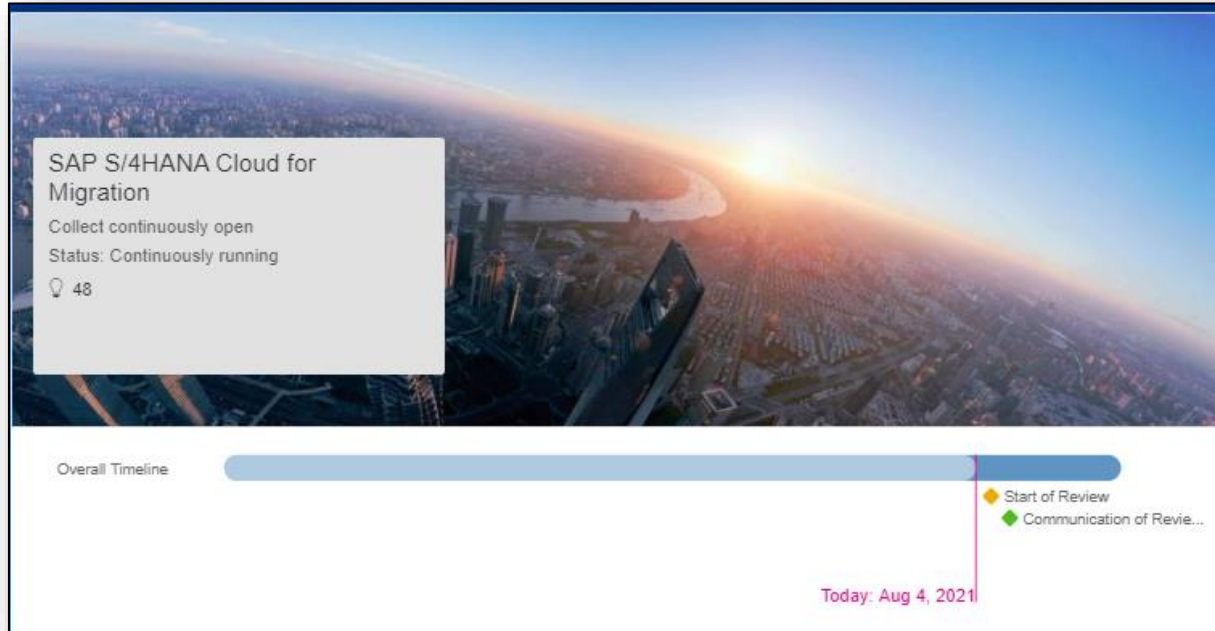
# Continuous Influence for SAP S/4HANA Cloud Requests





# Continuous Influence

## SAP S/4HANA Cloud Requests



Do you miss any functionality or migration object in SAP S/4HANA migration cockpit (Cloud)?

Submit your request in Continuous Influence – [SAP S/4HANA Cloud for Migration](#)

Request submission is only possible for **customers and partners with a valid S-User**. You have possibility not only to create your own requests, but also take part in the voting of other proposals.

# **SAP S/4HANA migration cockpit**

## **Content updates**



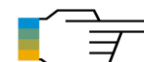


# SAP S/4HANA migration cockpit

## File/Staging 2108 new migration objects

### New objects:

- Business solution order
- EHS - Calculation definition
- EHS - Compliance requirement
- EHS - Compliance scenario
- EHS - Data collection
- EHS - Location aggregation
- Master recipe
- Object classification - Purchasing info record (EINA)
- PRA - Account entry control
- PRA - Allocation cross reference
- PRA - Check input process rule
- PRA - Check input translation
- PRA - Chemical analysis data
- PRA - Contract
- PRA - Division order interest
- PRA - DOI accounting
- PRA - DOI MP WC cross reference
- PRA - Extend existing customer by PRA data
- PRA - Extend existing supplier by PRA data
- PRA - Joint venture
- PRA - Journal entry open balance
- PRA - MP/WC transporter cross reference
- PRA - MP-WC to contract cross reference
- PRA - Remitter to DOI cross reference
- PRA - Settlement diversity
- PRA - Settlement statement DOI cross reference
- PRA - State tax rate
- PRA - Tax calculation data
- PRA - Unit venture tract
- PRA - Valuation cross reference
- PRA - Valuation formula
- PRA - Well and well completion
- PRA - Well completion tax classification
- PRA - Well completion volume
- Revenue accounting contract
- SD - Condition Record for Material determination (delivered with SAP S/4HANA Cloud 2106)
- SD - Sales order (only open SO)



[Release Comparison of Migration Object Templates](#)

# SAP S/4HANA migration cockpit

File/Staging 2108 “Deprecated” migration objects

## Objects Set to "Deprecated" with SAP S/4HANA Cloud 2108:

- SD - Material determination
- SD - Sales order (only open SO)
- TRM - Deposit at notice

# **SAP S/4HANA migration cockpit**

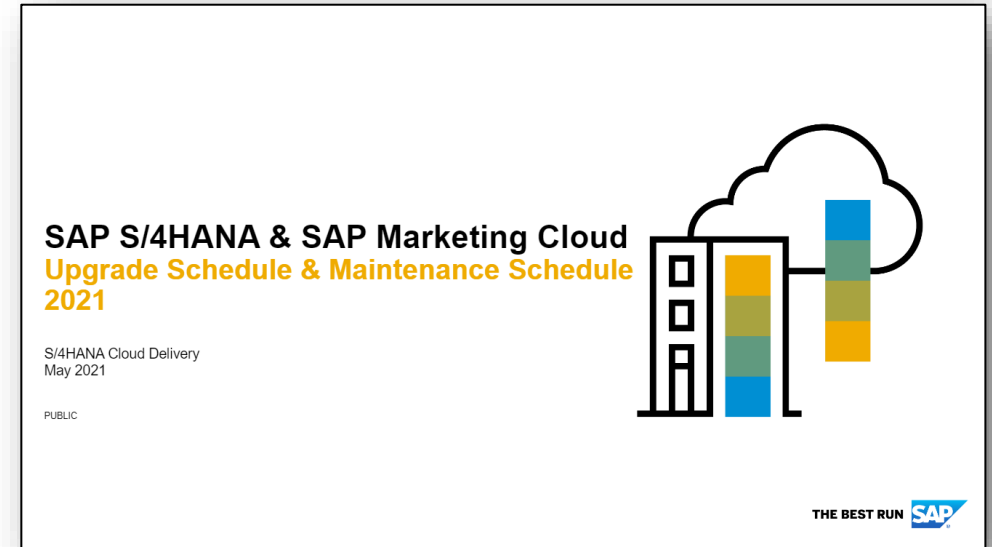
## **Further information**



# SAP S/4HANA migration cockpit – migrate your data app (1)

To reduce errors throughout data migration in SAP S/4HANA Cloud using the Migrate your Data App – Migration cockpit, it is recommended to avoid performing data migration activities during SAP S/4HANA Cloud upgrades.

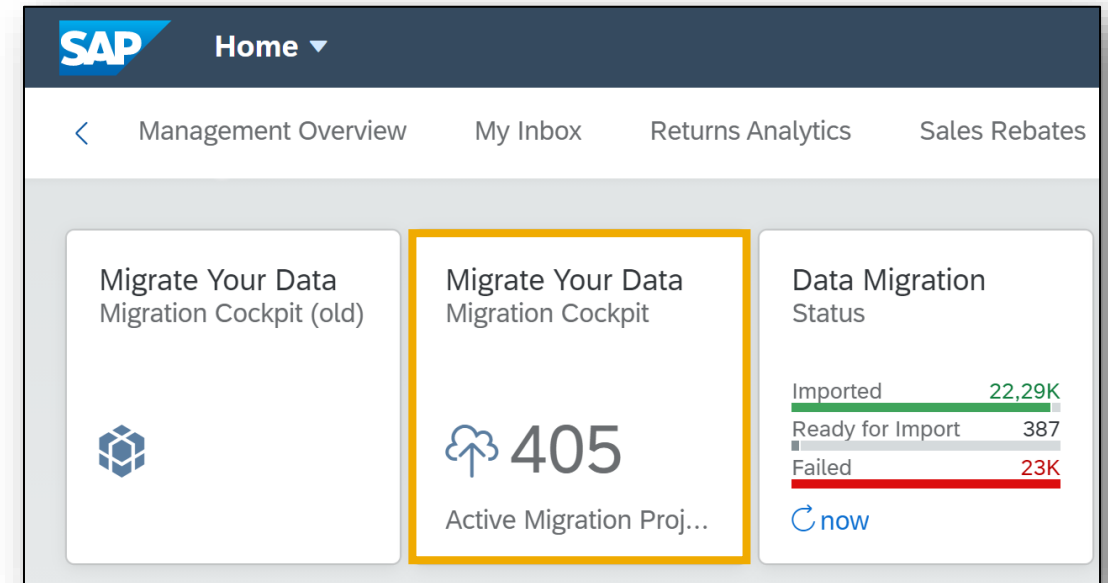
Please check the upgrade schedule linked in [KBA 2996675](#)



# SAP S/4HANA migration cockpit – migrate your data app (2)

If you get the warning message “Mapping of XXX not yet confirmed, maintain value conversion in migration cockpit” or you notice that the new mapping tasks appear during simulation, please check the following KBAs:

- [KBA 3075948](#)
- [KBA 3076466](#)



# SAP S/4HANA migration cockpit – community newsletter

Data Migration ☆ Next >

SAP enables data migration to SAP S/4HANA Cloud for customers coming from any legacy system. SAP S/4HANA Cloud customers can take advantage of reliable migration approaches built into SAP S/4HANA Cloud using the SAP S/4HANA Migration Cockpit together with a set of predefined data migration objects.

Product Assistance	SAP Best Practices
Object-Related Information	Training and Education
Getting Started	<b>News</b>
Further Information	SAP Community

**News**

[SAP S/4HANA Migration Cockpit Community Newsletter](#)

Stay up to date and find out about new functions and innovations in the quarterly newsletter on SAP Community.

Also, consider [signing up](#) for an abundance of information about SAP S/4HANA Migration Cockpit. Get updates on features, development news, enablement material, upcoming events, and webinars.

Stay up to date about the new content published on SAP S/4HANA migration cockpit.

[Sign up](#) to the community quarterly newsletter!

[http://help.sap.com/S4\\_CE\\_DM](http://help.sap.com/S4_CE_DM)



# SAP S/4HANA migration cockpit community

One-stop shop – free access

- Latest news
- Blogs
- Q&A section

<https://community.sap.com/topics/s4hana-migration-cockpit>

**Check for new announcements**

## Featured Content



### SAP S/4HANA Migration Cockpit

Take advantage of reliable migration approaches using the SAP S/4HANA migration cockpit. Find the overview presentation here.

[SAP S/4HANA Migration Cockpit](#)



### Landing Pages

Access the collection of data migration topics with SAP S/4HANA migration cockpit Landing Pages.

[SAP S/4HANA](#)

[SAP S/4HANA Cloud](#)



### Blog

Check the new Blog SAP S/4HANA migration cockpit, direct transfer, transport capabilities

[Read the Blogpost](#)

[SAP S/4HANA Migration Cockpit – Create your Test System](#)

[Starter Blog for SAP S/4HANA Migration Cockpit](#)

## Search community content

## Browse this topic

### SAP S/4HANA Migration Cockpit

[SAP S/4HANA Migration Cockpit FAQ](#)

## Latest Recorded Sessions

[Data Migration to SAP S/4HANA Cloud with SAP S/4HANA Migration Cockpit](#)

[SAP S/4HANA Migration Cockpit \(Part 1\) File/Staging](#)

[SAP S/4HANA Migration Cockpit \(Part 2\) Direct Transfer](#)

# Recap to SAP S/4HANA Cloud 2105

Since SAP S/4HANA Cloud 2105 release, the following changes took place:

1. Instance-based simulation, migration, deletion via mass processing
2. Migration / simulation of all instances, random 10%, random 500 items, or custom selection
3. From 2105, the “old” app Migrate your Data – migration cockpit has been deprecated. Migration projects available in display mode only.

# Thank you.

**SAP S/4HANA migration cockpit**

[sap\\_s4hana\\_migration\\_cockpit@sap.com](mailto:sap_s4hana_migration_cockpit@sap.com)

- ▶ Video: [Migrate Data using Staging Tables](#)
- ▶ Video: [Migrate Data Directly from SAP System](#)
- ▶ Community Topic Page <https://community.sap.com/topics/s4hana-migration-cockpit/>
- ▶ Click through tutorials [SAP S/4HANA migration cockpit](#)

**Find a comprehensive FAQ list in the SAP S/4HANA migration cockpit Community:**  
[FAQs - SAP S/4HANA Migration Cockpit for SAP S/4HANA Cloud](#)