

SAP Crystal Solutions
SAP Crystal Reports and SAP Crystal Server

Step by Step guide: Connect to a data source With SAP Crystal Reports 2020

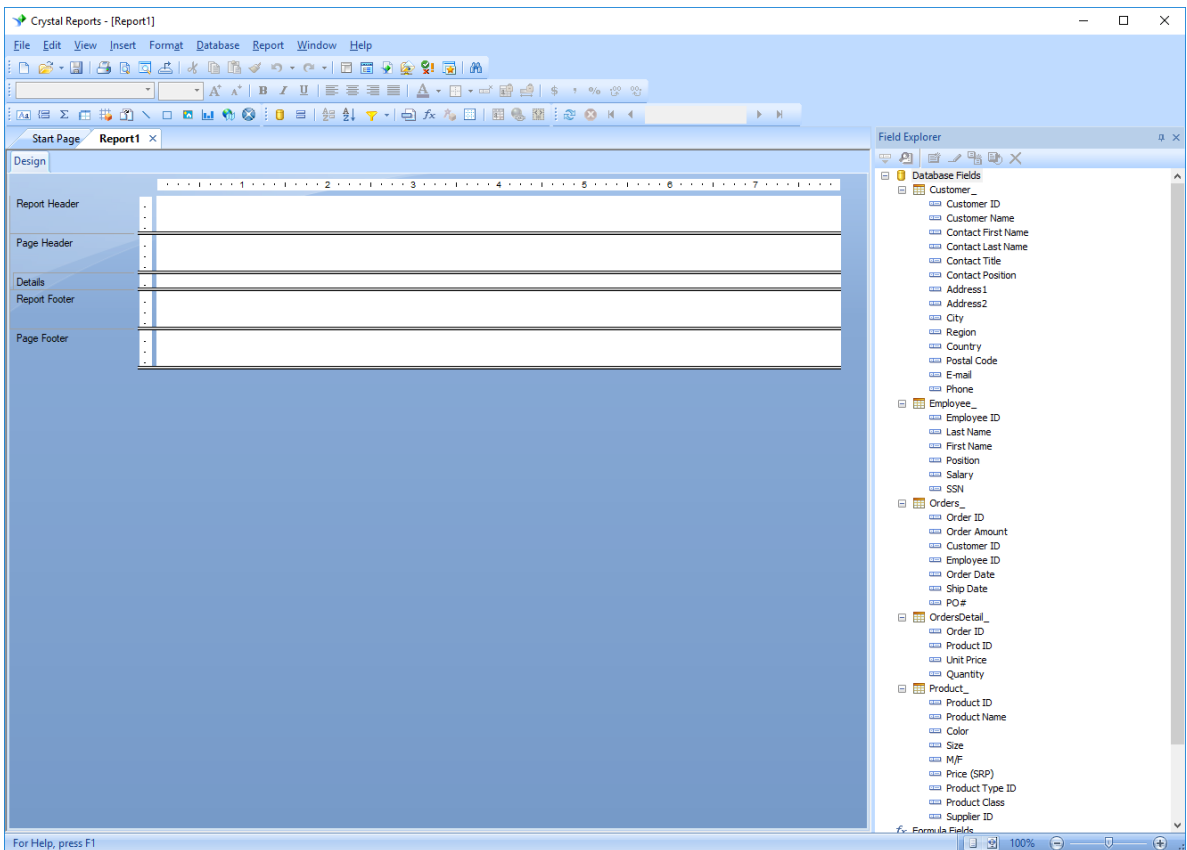




CONNECT TO A 64-BIT DATA SOURCE WITH SAP CRYSTAL REPORTS 2020

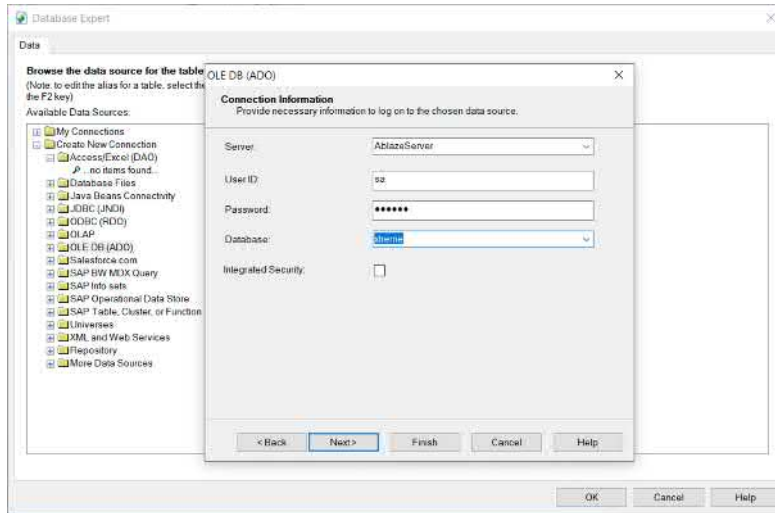
No matter what type of report you're designing with SAP Crystal Reports, the first step you'll always undertake is connecting to a 64-bit data source. And, while you may connect to a data source either within a report wizard, or using the Blank Report option, you'll have full flexibility for your report with the Blank Report option. As such, the Blank Report option is covered here (report wizard steps are similar).

FINAL RESULT

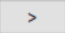


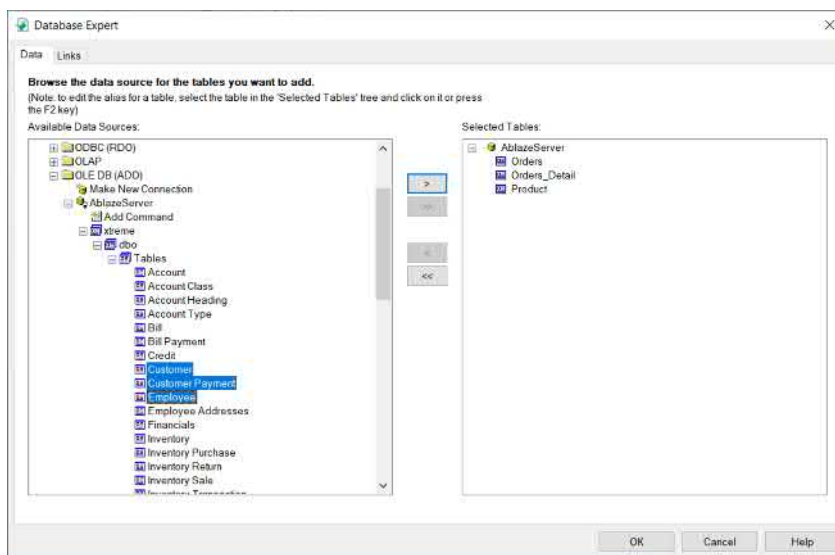
CONNECT TO A 64-BIT DATA SOURCE WITH THE BLANK REPORT OPTION

1. Within the Create New Connection category of the Database Expert, expand the category of the data source you wish to connect to.




2. Specify the necessary file location, database credentials, or other items particular to the data source you selected. Click Finish.

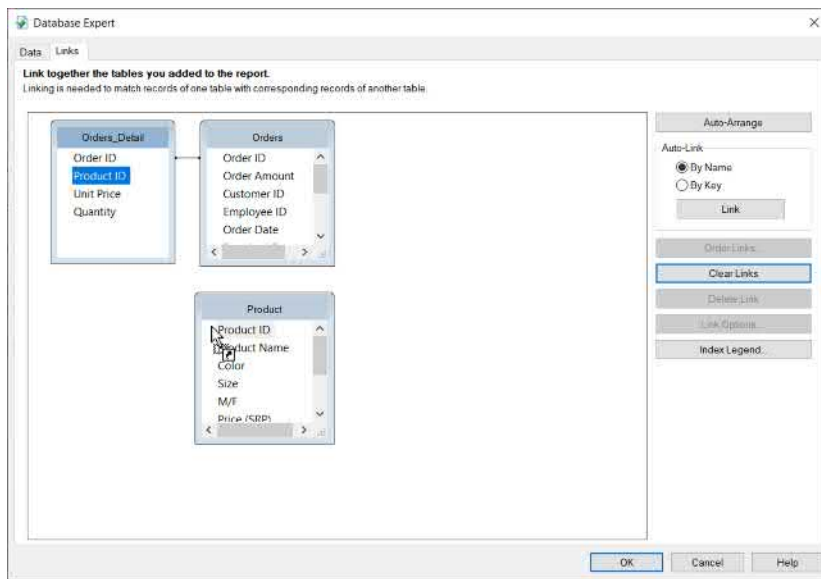
3. With the connected data source expanded under Available Data Sources, CTRL-CLICK on the table or tables you wish to use on your report. Click  to add the tables to Selected Tables. You may also drag desired tables to Selected Tables.



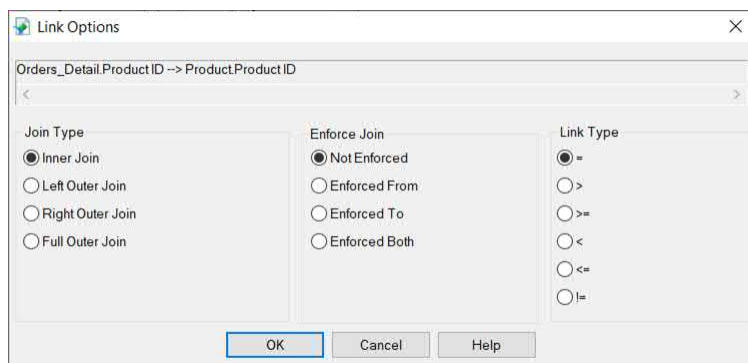
4. Click the Links tab at the top of the Database Expert.

5. SAP Crystal Reports may automatically link tables together (you'll notice link lines connecting tables together). Should this happen, you should double check that the links Crystal Reports chose are correct as, in many "real world" cases, these automatic links will not properly link tables on the correct fields. If you prefer to link tables yourself, click  to clear the automatic links.

6. Resize and move table windows to make them easier to see and navigate. Identify the proper field in one table that you want to link to another table. Drag from the "source table" field onto the "destination table" field. A line will appear between the two tables.



7. By default, SAP Crystal Reports joins tables using an Inner Join (sometimes referred to as an Equal Join). If you prefer to use an alternate join type, or select other join-related options, DOUBLE-CLICK the desired join line. The Link Options dialog box will appear. Make desired changes and click OK.



8. When you're finished adding and joining tables, click OK to close the Database Expert. A blank Design tab will appear. Proceed to design your report!



© 2020 SAP AG or an SAP affiliate company. All rights reserved.

No part of this publication may be reproduced or transmitted in any form or for any purpose without the express permission of SAP AG or an SAP affiliate company.

SAP and other SAP products and services mentioned herein as well as their respective logos are trademarks or registered trademarks of SAP AG (or an SAP affiliate company) in Germany and other countries. Please see <https://www.sap.com/about/legal/trademark.html> for additional trademark information and notices. Some software products marketed by SAP AG and its distributors contain proprietary software components of other software vendors.

National product specifications may vary.

These materials are provided by SAP AG or an SAP affiliate company for informational purposes only, without representation or warranty of any kind, and SAP AG or its affiliated companies shall not be liable for errors or omissions with respect to the materials. The only warranties for SAP AG or SAP affiliate company products and services are those that are set forth in the express warranty statements accompanying such products and services, if any. Nothing herein should be construed as constituting an additional warranty.

In particular, SAP AG or its affiliated companies have no obligation to pursue any course of business outlined in this document or any related presentation, or to develop or release any functionality mentioned therein. This document, or any related presentation, and SAP AG's or its affiliated companies' strategy and possible future developments, products, and/or platform directions and functionality are all subject to change and may be changed by SAP AG or its affiliated companies at any time for any reason without notice. The information in this document is not a commitment, promise, or legal obligation to deliver any material, code, or functionality. All forward-looking statements are subject to various risks and uncertainties that could cause actual results to differ materially from expectations. Readers are cautioned not to place undue reliance on these forward-looking statements, which speak only as of their dates, and they should not be relied upon in making purchasing decisions.

