



# SAP ICC Integration Scenario

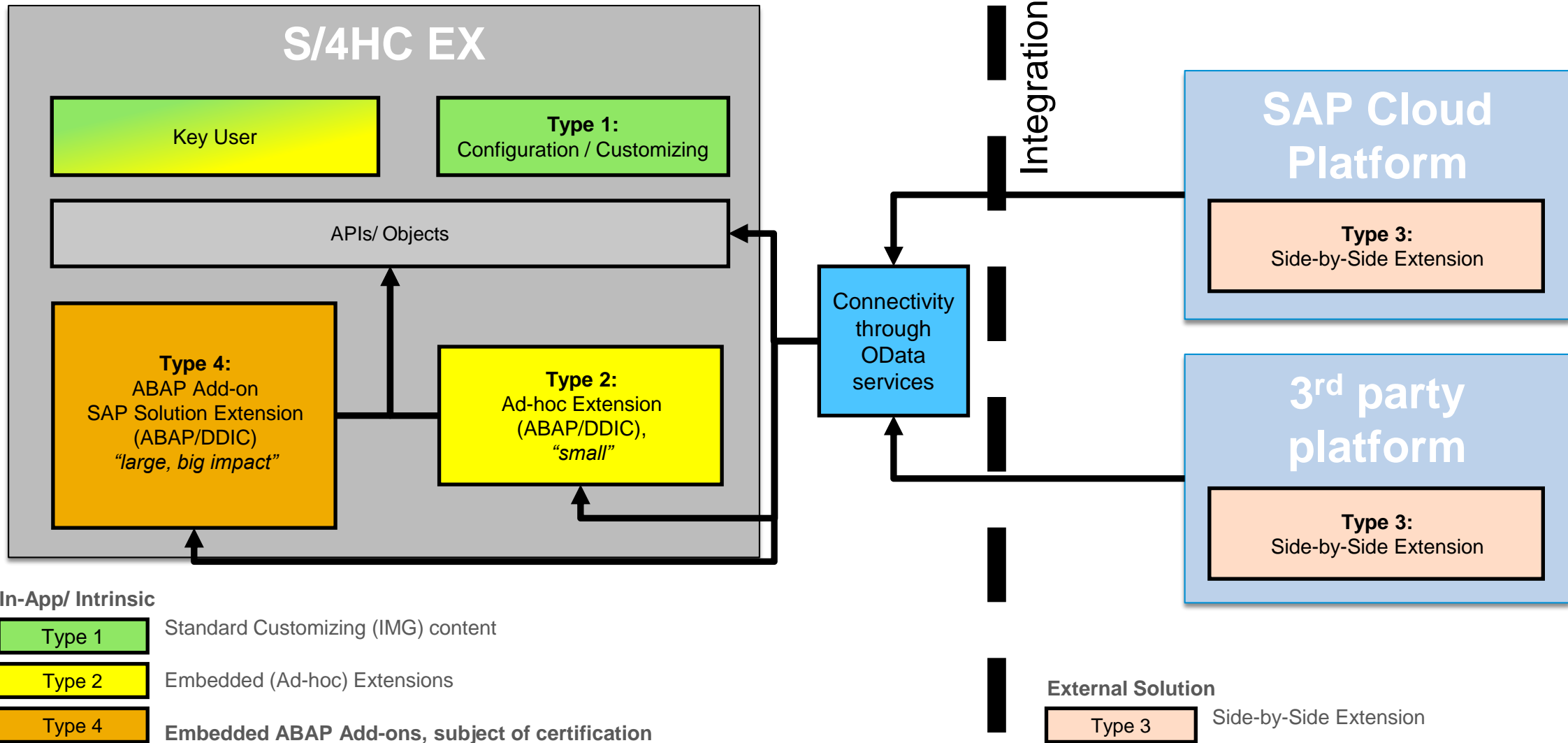
## ABAP Add-On Deployment Certification, for SAP S/4HANA Cloud, extended edition

PUBLIC

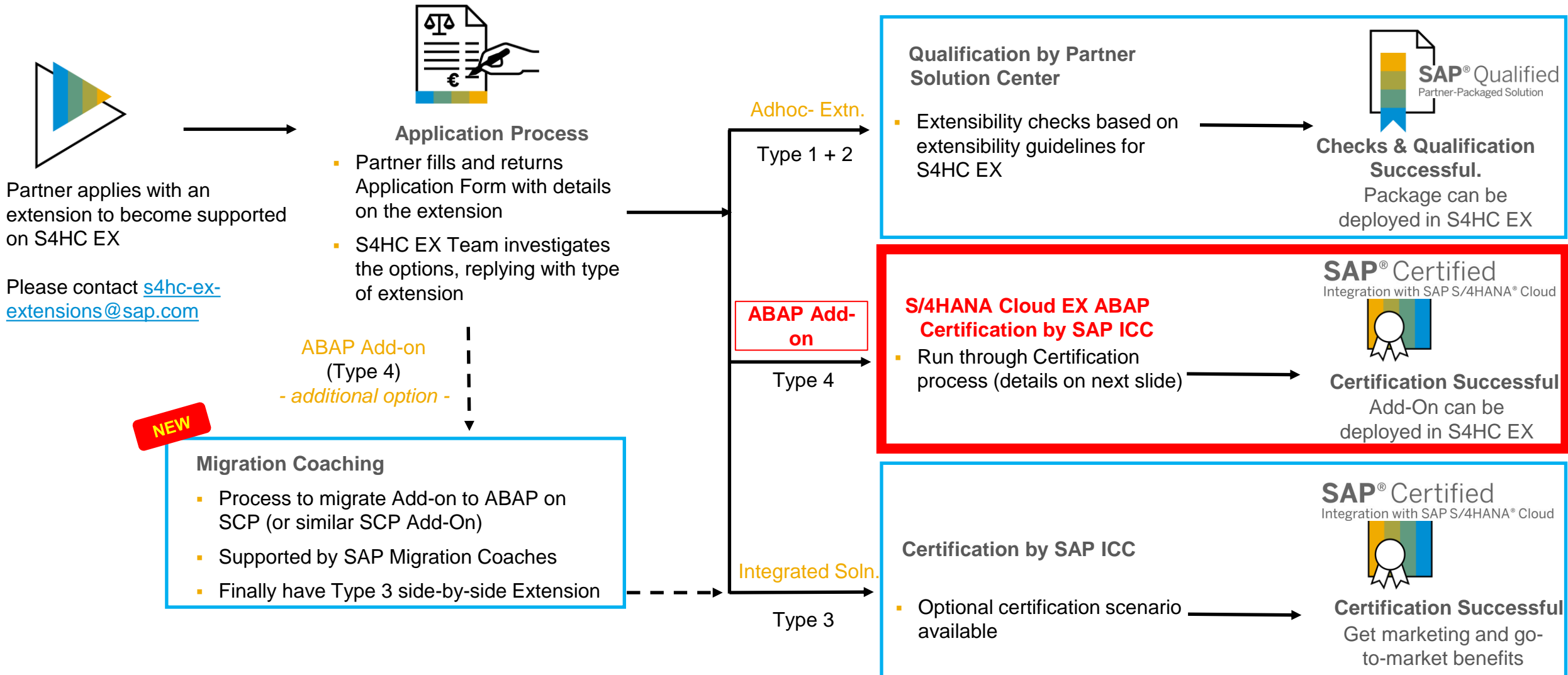
# Introduction for certification for SAP S/4HANA Cloud, extended edition (“S4HC EX”)

- ❑ Third-party ABAP Add-Ons that conform to SAP standards and conventions for ABAP packaging and deployment are eligible for certification within the SAP integration certification program. Certification is possible for SAP on-premise solutions like SAP Business Suite, SAP NetWeaver and SAP S/4HANA.
- ❑ If additional technical and operational requirements could be met by the ABAP Add-On, then it can also be certified for **SAP S/4HANA Cloud, extended edition (“S4HC EX”)**.  
Test Plan includes standard S/4HANA certification requirements, Security Code Scan, and these additional technical and operational requirements.
- ❑ **Remark:** This SAP solution was previously called SAP S/4HANA Cloud, Single Tenant Edition (“STE”)
- ❑ To start the process, please contact [s4hc-ex-extensions@sap.com](mailto:s4hc-ex-extensions@sap.com)

# Possible Extension Types with S4HC EX



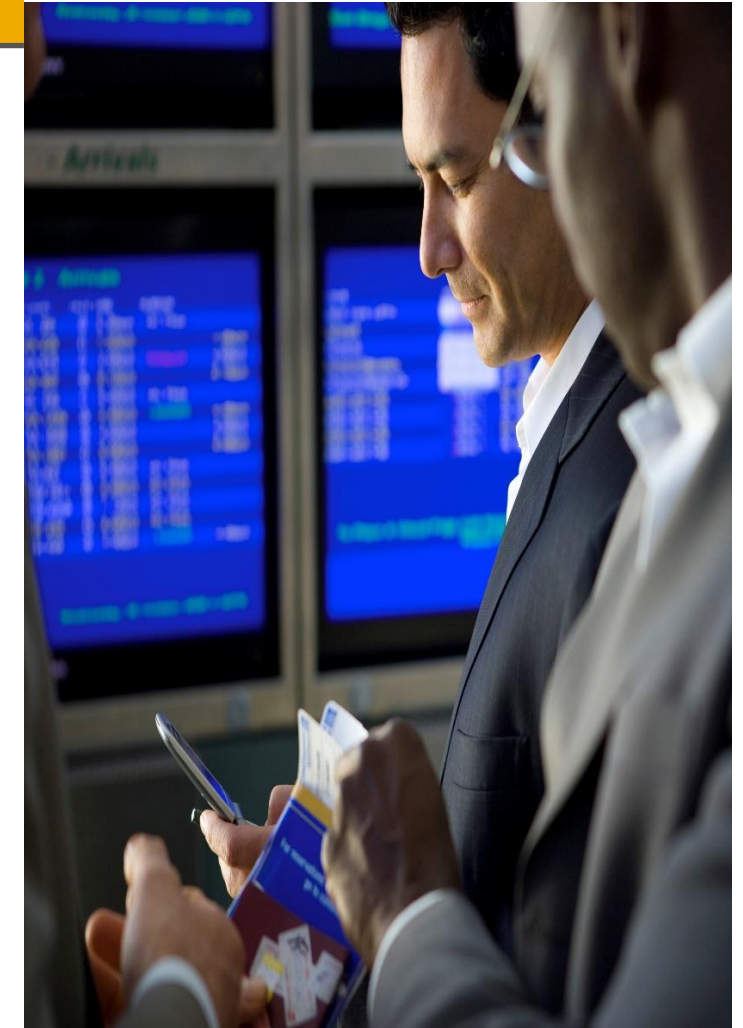
# Process flow of qualification / certification for S4HC EX







# Details of ABAP Add-On Certification Program for S4HC EX

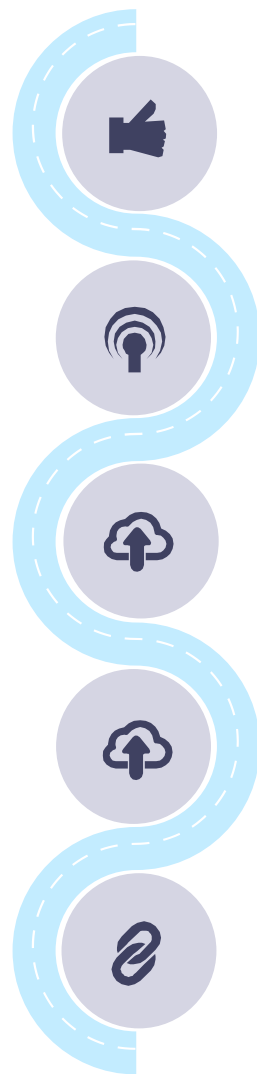
## Program Characteristics

- **Certification program** based on existing S/4HANA ABAP Add-On Certification and ABAP Service Package
- **Eligibility:** All Partners that are PartnerEdge (or GTP, GSSP) members can participate.
- **Certification requirements** include all standard S/4HANA onPremise Certification Tests, Security Code Scan, and further operational and technical test criteria. Detailed Test Plan available.
- **Benefits:**
  - Partners get 2 certifications: S/4HANA onPremise *and* S4HC-EX for latest release, validity 3 years
  - Partners get listing on SAP Certified Solutions Directory
  - License to use SAP Code Vulnerability Analyzer for Security Code Scan of Add-On included
- **Certification fee:**
  - **Net new Partners:**  
Pay 15k€ in first year, 10k€ per year for subsequent years (*same fee as onPremise certification*)
  - **Partners with valid Add-On certification subscription:**  
Keep the subscription, pay *one-time-fee of 5k€*
  - Partners get 2 certifications for one fee: *S4HC-EX certification is practically free! Get 2 for 1!*



# Details of Requirements for ABAP Add-On Certification

Criteria	Details	Pass Criteria
 <b>Standard S/4HANA onPrem certification requirements</b>	<ul style="list-style-type: none"> <li>▪ Built with valid SAP Application Development Licenses</li> <li>▪ Created in registered namespace of Partner</li> <li>▪ Packaged as Add-On with SAP Add-On Assembly Kit</li> <li>▪ Supports installation und uninstallation through SAINT transaction</li> <li>▪ Detailed Test Plan available</li> </ul>	<ul style="list-style-type: none"> <li>▪ Add-On is checked according SAP ICC processes</li> </ul>
 <b>Security Code Scan</b>	<ul style="list-style-type: none"> <li>▪ Partner solution is scanned against SAP corporate security guidelines using SAP's own tool: SAP Code Vulnerability Analyzer (CVA)</li> <li>▪ If Partner has license with other Security Code Scan provider, then this can also be accepted with conditions</li> </ul>	<ul style="list-style-type: none"> <li>▪ Very high &amp; high vulnerabilities must be fixed or mitigated</li> <li>▪ False positives evidence must be provided by the partner and must be approved by the Security Code Scan provider</li> </ul>
 <b>Operational Cloud Requirements</b>	<ul style="list-style-type: none"> <li>▪ Partner must provide regular upgrade/patch packages, per S4HC EX lifecycle</li> <li>▪ External components <i>must not</i> run on S4HC EX tenant</li> <li>▪ Partner must re-certify every year for latest S/4HANA release, until 3 months after release, to make ensure customer tenant upgrade</li> <li>▪ Partner must provide technical documentation, to support installation/ uninstallation, operations, data strategy, monitoring, lifecycle and sizing.</li> <li>▪ Partner must support Software Delivery Process and give needed packages to S4HC EX operations team with named contacts</li> </ul>	<ul style="list-style-type: none"> <li>▪ Partner fills questionnaire and clarify, as needed</li> <li>▪ Partner delivers documentation</li> <li>▪ Material is reviewed by SAP ICC and S4HC EX operations team</li> <li>▪ Missing information must be added</li> </ul>
 <b>Technical Cloud Requirements</b>	<ul style="list-style-type: none"> <li>▪ S/4HC Extensibility guide is followed</li> <li>▪ Further technical requirements</li> <li>▪ Detailed Test Plan available</li> </ul>	<ul style="list-style-type: none"> <li>▪ Add-On Objects are checked according SAP ICC processes</li> </ul>



# Benefits of SAP Certified Integration

## Opportunity for Growth and Participation

By supporting market-leading solutions from SAP and offering integrated solutions to its customer base

May experience faster sales cycles

Certification serves as proof point for technical alignment with SAP solutions

## Increased Potential for Success

Faster implementations and deployments in SAP solution-based landscapes

Accelerated ramp-up on SAP knowledge for smaller ISVs

## Marketing Benefits

SAP Interface Certificate and an official “SAP Certified” solution logo:

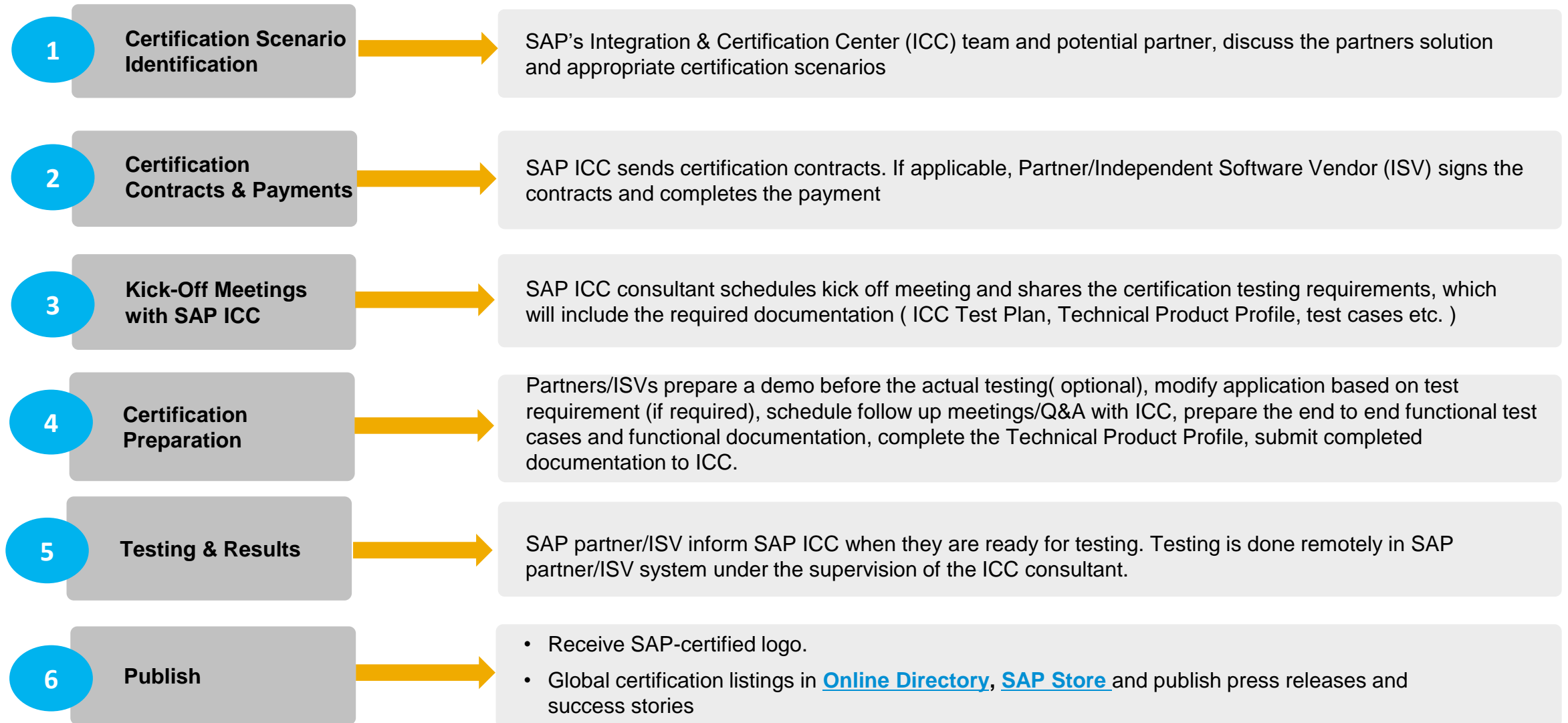
**SAP<sup>®</sup> Certified**  
Integration with SAP S/4HANA<sup>®</sup> Cloud

Listing in [Online Directory](#)

Press release review

Promotion during events, positioning the product as “certified” to SAP customers and consulting partners

# Certification Process Overview





# Related Links

## SAP ICC Application Form

- ❑ Please fill in [SAP ICC online application form](#) with information about your company and about the software application that you want to integrate in order to apply for an integration certification.

## Know More About Certification

- ❑ To learn more about certification please visit [Software Certification](#) page.
- ❑ SAP Training and Help: Please refer to [SAP Education](#).
- ❑ [ABAP Homepage](#) on help.sap.com
- ❑ SAP Add-On Assembly Kit – [Documentation](#) and all related documents
- ❑ Check the document “**Extensibility Guide for SAP S/4HANA Cloud, extended edition**” which provides very important information and guidelines. The document is provided through [SAP Note 2920697](#).

# Thank you

Follow us



**[www.sap.com/contactsap](http://www.sap.com/contactsap)**

© 2022 SAP SE or an SAP affiliate company. All rights reserved.

No part of this publication may be reproduced or transmitted in any form or for any purpose without the express permission of SAP SE or an SAP affiliate company.

The information contained herein may be changed without prior notice. Some software products marketed by SAP SE and its distributors contain proprietary software components of other software vendors. National product specifications may vary.

These materials are provided by SAP SE or an SAP affiliate company for informational purposes only, without representation or warranty of any kind, and SAP or its affiliated companies shall not be liable for errors or omissions with respect to the materials. The only warranties for SAP or SAP affiliate company products and services are those that are set forth in the express warranty statements accompanying such products and services, if any. Nothing herein should be construed as constituting an additional warranty.

In particular, SAP SE or its affiliated companies have no obligation to pursue any course of business outlined in this document or any related presentation, or to develop or release any functionality mentioned therein. This document, or any related presentation, and SAP SE's or its affiliated companies' strategy and possible future developments, products, and/or platforms, directions, and functionality are all subject to change and may be changed by SAP SE or its affiliated companies at any time for any reason without notice. The information in this document is not a commitment, promise, or legal obligation to deliver any material, code, or functionality. All forward-looking statements are subject to various risks and uncertainties that could cause actual results to differ materially from expectations. Readers are cautioned not to place undue reliance on these forward-looking statements, and they should not be relied upon in making purchasing decisions.

SAP and other SAP products and services mentioned herein as well as their respective logos are trademarks or registered trademarks of SAP SE (or an SAP affiliate company) in Germany and other countries. All other product and service names mentioned are the trademarks of their respective companies.

See [www.sap.com/trademark](http://www.sap.com/trademark) for additional trademark information and notices.

