



CUSTOMER

# **SAP GUI for Windows 7.60**

## Release Notes

# TABLE OF CONTENTS

<b>SAP GUI LIFECYCLE</b> .....	<b>3</b>
<b>PLATFORM SUPPORT</b> .....	<b>3</b>
<b>NEW FEATURES IN RELEASE 7.60</b> .....	<b>4</b>
<b>Belize Theme for all SAP products (“Belize without Fiori Features”)</b> .....	<b>4</b>
<b>Belize Theme: Improved visualization of SAP Logon and SAP GUI Options Dialog</b> .....	<b>5</b>
<b>Belize Theme: Improved usability and visualization in main window</b> .....	<b>5</b>
<b>Belize Theme: "Color Settings" and "Colors in System"</b> .....	<b>6</b>
<b>Blue Crystal Theme: "Colors in System"</b> .....	<b>6</b>
<b>SAP GUI Accessibility: Belize</b> .....	<b>6</b>
<b>SAP GUI Accessibility: Belize High Contrast Black</b> .....	<b>6</b>
<b>SAP GUI Accessibility: Belize High Contrast White</b> .....	<b>7</b>
<b>SAP GUI Accessibility: Audio Feedback</b> .....	<b>7</b>
<b>Grid View (ALV): Input History for editable ALV</b> .....	<b>7</b>
<b>SAP Screen Personas: Multiple updates</b> .....	<b>7</b>
<b>SAP Business Client Integration: Branding Logo</b> .....	<b>7</b>
<b>SAP GUI Help: Multiple improvements</b> .....	<b>8</b>
<b>SAP GUI Options Dialog: Restore &amp; Clean-up</b> .....	<b>8</b>
<b>Connection to Message Servers</b> .....	<b>8</b>
<b>Extended Platform Support for individual components</b> .....	<b>8</b>
<b>CHANGED DEFAULT SETTINGS</b> .....	<b>9</b>
<b>NO LONGER SUPPORTED / AVAILABLE</b> .....	<b>10</b>

[www.sap.com/contactsap](http://www.sap.com/contactsap)

© 2018 SAP SE or an SAP affiliate company. All rights reserved.

No part of this publication may be reproduced or transmitted in any form or for any purpose without the express permission of SAP SE or an SAP affiliate company.

The information contained herein may be changed without prior notice. Some software products marketed by SAP SE and its distributors contain proprietary software components of other software vendors. National product specifications may vary.

These materials are provided by SAP SE or an SAP affiliate company for informational purposes only, without representation or warranty of any kind, and SAP or its affiliated companies shall not be liable for errors or omissions with respect to the materials. The only warranties for SAP or SAP affiliate company products and services are those that are set forth in the express warranty statements accompanying such products and services, if any. Nothing herein should be construed as constituting an additional warranty.

In particular, SAP SE or its affiliated companies have no obligation to pursue any course of business outlined in this document or any related presentation, or to develop or release any functionality mentioned therein. This document, or any related presentation, and SAP SE's or its affiliated companies' strategy and possible future developments, products, and/or platform directions and functionality are all subject to change and may be changed by SAP SE or its affiliated companies at any time for any reason without notice. The information in this document is not a commitment, promise, or legal obligation to deliver any material, code, or functionality. All forward-looking statements are subject to various risks and uncertainties that could cause actual results to differ materially from expectations. Readers are cautioned not to place undue reliance on these forward-looking statements, and they should not be relied upon in making purchasing decisions.

SAP and other SAP products and services mentioned herein as well as their respective logos are trademarks or registered trademarks of SAP SE (or an SAP affiliate company) in Germany and other countries. All other product and service names mentioned are the trademarks of their respective companies. See [www.sap.com/copyright](http://www.sap.com/copyright) for additional trademark information and notices.

**THE BEST RUN**



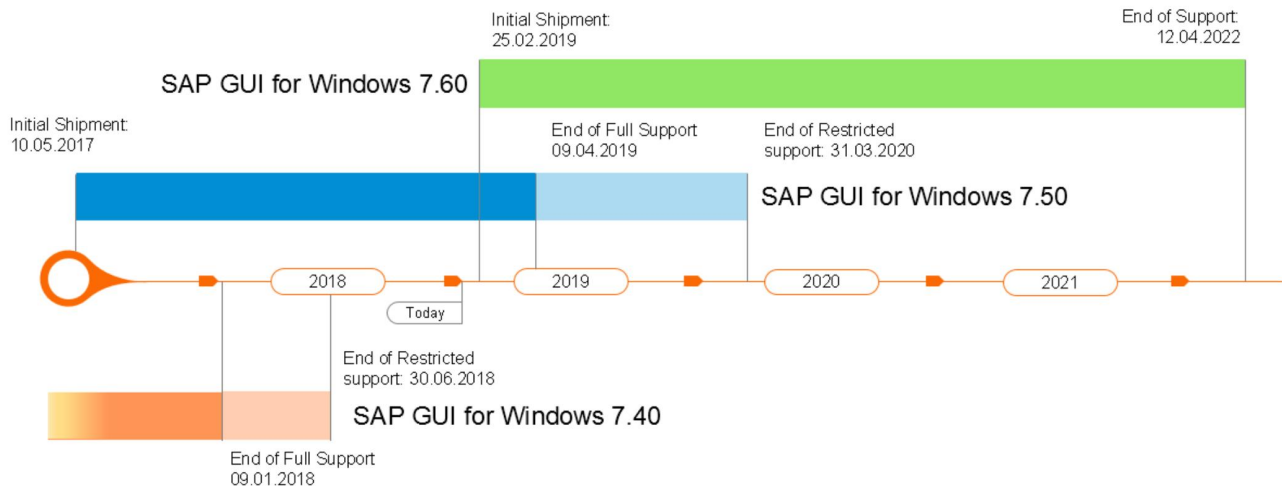
This document gives you an overview of what is new in release 7.60 of SAP GUI for Windows.

## SAP GUI LIFECYCLE

SAP GUI for Windows 7.60 was created with Microsoft Visual Studio 2017 which is in mainstream support by Microsoft until 12<sup>th</sup> of April 2022 (see also <https://support.microsoft.com/en-US/lifecycle/search?alpha=visual%20studio%202017>).

Therefore, SAP GUI for Windows 7.60 is supported until 12<sup>th</sup> of April 2022.

The chart below shows the lifecycle of SAP GUI for Windows releases 7.40 up to 7.60. For the latest information refer to SAP Note [147519](#).



## PLATFORM SUPPORT

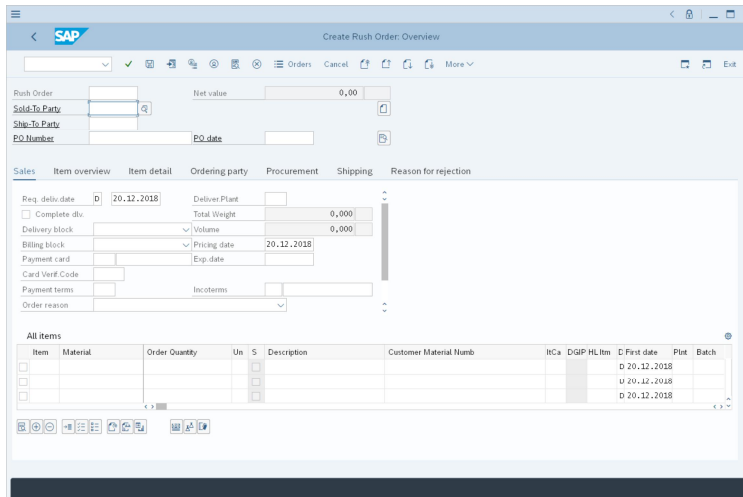
- Windows 2008 Server 32-bit
- Windows 2008 Server 64-bit on x64 (AMD) and Intel EM64T
- Windows 2008 R2 Server 64-bit on x64 (AMD) and Intel EM64T
- Windows 7 32-bit (only Professional, Ultimate, and Enterprise editions)
- Windows 7 64-bit edition on x64 (AMD) and Intel EM64T (only Professional, Ultimate, and Enterprise editions)
- Windows Server 2012 64-bit on x64 (AMD) and Intel EM64T
- Windows Server 2012 R2 64-bit on x64 (AMD) and Intel EM64T
- Windows 8.1 32-bit (only Professional and Enterprise editions)
- Windows 8.1 64-bit on x64 (AMD) and Intel EM64T (only Professional and Enterprise editions)
- Windows 10 32-bit (only Education, Pro, and Enterprise editions)
- Windows 10 64-bit on x64 (AMD) and Intel EM64T (only Education, Pro, and Enterprise editions)
- Windows Server 2016 64-bit on x64 (AMD) and Intel EM64T
- Windows Server 2019 64-bit on x64 (AMD) and Intel EM64T

SAP Note [66971](#) provides the latest information on platforms supported by SAP GUI.

## NEW FEATURES IN RELEASE 7.60

### Belize Theme for all SAP Products (“Belize Without Fiori Features”)

Belize can be used for all SAP products which are presently supported by SAP and is now the default theme for all SAP products. Since certain “Fiori Features” are only available in SAP S/4HANA products, these features cannot be activated when using Belize for other SAP products ("Belize without Fiori Features").



The following features (among) others are not available when "Belize without Fiori Features" is used. The impact of the absence of each feature is mentioned in the second column of the table.

Feature	Impact when Fiori Features are not active
Automatic wide rendering of UI elements	No element is automatically enlarged. Screens are displayed just like in older SAP GUI themes.
Bigger screen metrics	The screen metric (line height) is smaller than in standard Belize to show a good amount of data on the screen also in applications which have not been adjusted to Belize. However it is larger than in themes like Blue Crystal.
View Switch	The View Switch is not available. Items in a View Switch are displayed as buttons in the header toolbar.
Displaying buttons with text	All buttons in the header of the main window and in the footer of popups are displayed as specified by the application. This means that buttons are displayed with their icons again.
Hiding certain buttons from the UI	The paging buttons, the "New GUI window" button and the "Generates shortcut" button are displayed in the header toolbar.
Visualization of errors / warnings using a red / orange border around the fields	Errors and warnings are indicated via a changed text color only.
Right-alignment of labels	Labels are by default left aligned and are connected to the respective fields via an underline.

Thus, in "Belize without Fiori Features", SAP GUI behaves almost like when using older SAP GUI themes, but it is coming with a modern Belize look and some advanced features like the merged input history / enhanced search.

You can decide using Belize without Fiori Features for all SAP products including SAP S/4HANA if you want to reach full UI consistency.

### Belize Theme: Improved Visualization of SAP Logon and SAP GUI Options Dialog

- SAP Logon (Pad) and all SAP Logon dialogs are displayed with a full Belize visualization. Since the SAP Logon dialogs are also used in SAP Business Client when SAP GUI Connections are defined, the display when running SAP Business Client with Belize is now much more harmonized.
- SAP GUI options dialog shows a full Belize visualization.

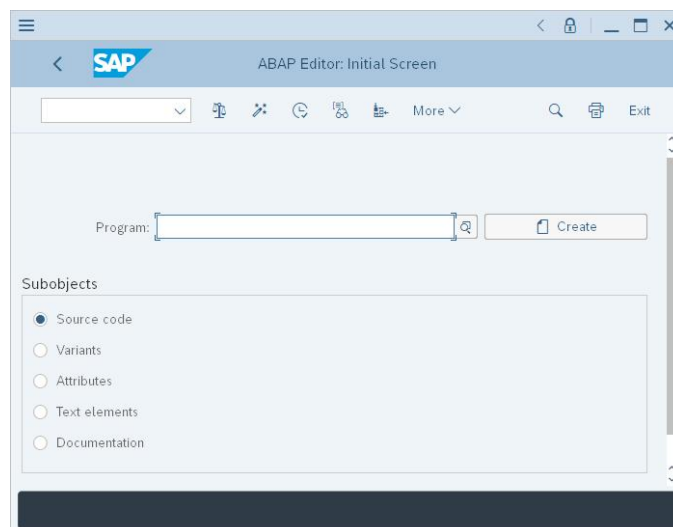
### Belize Theme: Improved Usability and Visualization in Main Window

- The buttons in the header of the main window and in the footer of popups are displayed with icons if configured by the application (just like in other SAP GUI themes). In SAP GUI for Windows 7.50 such buttons were displayed with text only. See the image below for a comparison of a sample application (SE80, at the top without icons, at the bottom with icons):



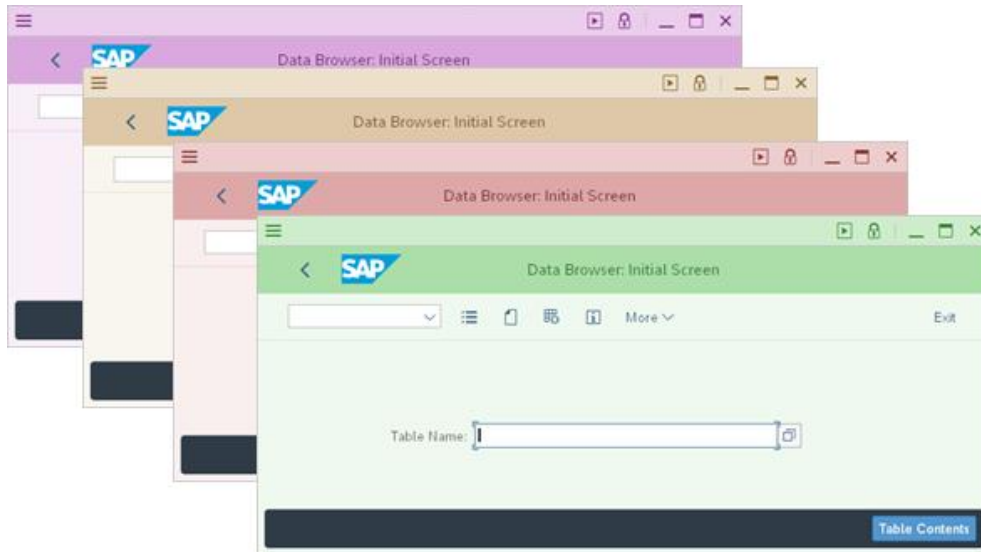
This feature is activated by default but can be turned off via the SAP GUI Options Dialog.

- Scrollbuttons for scrollbars have been introduced so that fine-grained scrolling is possible.
- Borders around group boxes have been introduced to simplify the recognition of the structure.
- Fiori Re-Use Components (SAP UI5 applications embedded in SAP GUI) can now hide the footer bar of SAP GUI for Windows so that only a single footer bar is displayed instead of two.
- The default proportional font of Belize is now "72", a font specifically developed for Belize. Previously Arial was used.



## Belize Theme: "Color Settings" and "Colors in System"

The features "Color Settings" and "Colors in System" can now be used for Belize. These features allow users and administrators to configure SAP GUI / the SAP System so that different colors schemes can be used for the SAP GUI window when logging on to the system (see SAP Note [2571622](#) for more information).



## Blue Crystal Theme: "Colors in System"

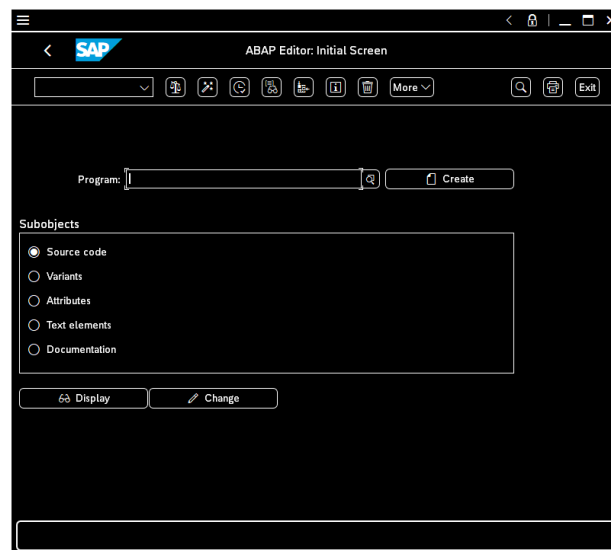
The feature "Colors in System" can now be used for Blue Crystal Theme as well. This feature allows the administrator to configure a default setting within the SAP System which defines the color scheme used for the SAP GUI window when logging on to this system (see SAP Note [2571622](#) for more information).

## SAP GUI Accessibility: Belize

The Belize theme is released for usage in Accessibility Mode with a Screenreader software (minimum requirement for the SAP Screenreader Extensions is patchlevel 51).

## SAP GUI Accessibility: Belize High Contrast Black

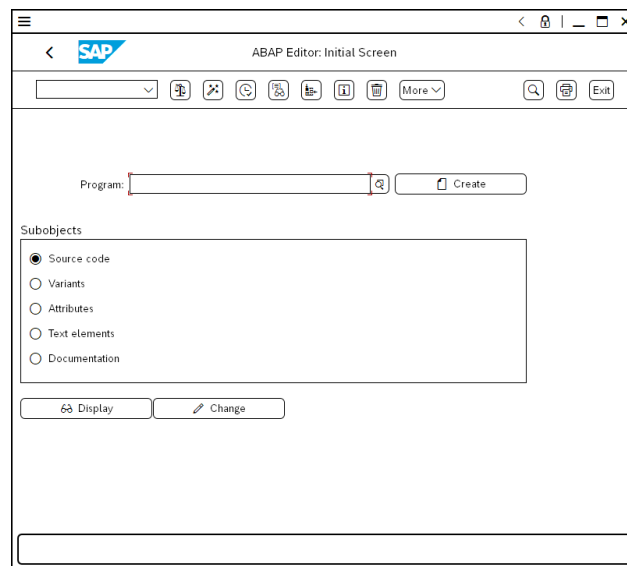
Belize now offers a "High Contrast Black" version.



For using this, you also need to enable a Windows High Contrast Black theme.

## SAP GUI Accessibility: Belize High Contrast White

Belize is the first SAP GUI theme to offer a "High Contrast White" version.



For using this, you also need to enable a Windows High Contrast White theme.

## SAP GUI Accessibility: Audio Feedback

The audio feedback in SAP GUI can be configured via a dedicated page in the SAP GUI options dialog. The default setting for the SAP GUI sounds was changed to "On" in case the accessibility mode is activated. The page in options dialog allows selecting the most suitable sound from 4 new sound schemes or from the hard-disk. An administrator can roll out dedicated sound files via adding them to the SAP GUI installation (see SAP Note [2724540](#) for more information).

## Grid View (ALV): Input History for Editable ALV

The Grid View Control now offers an input history like edit fields or table control cells already do. The input history is persisted per column and allows an easy re-use of values which are frequently entered by the user.

Airfare	Currency	Plane Type
422,94		747-400
422,94	JPY	✘ .00
422,94	EUR	✘ .00
422,94	USD	✘ .00
422,94	USD	747-400

## SAP Screen Personas: Multiple Updates

Various improvements have been implemented for the support of SAP Screen Personas in SAP GUI for Windows. See SAP Note [2080071](#) for more information.

## SAP Business Client Integration: Branding Logo

When running an FLP connection or a Business Client connection, the SAP Business Client 7.0 (or newer) can propagate a branding image contained in a custom theme to SAP GUI. SAP GUI displays this branding image just like it would display a branding image defined via SAP GUI options dialog. If both are defined, the image coming from SAP Business Client is displayed.

## **SAP GUI Help: Multiple Improvements**

- The SAP GUI end user help and the SAP GUI Scripting API help are no longer delivered as .chm documents, but as a collection of HTML documents. This improves the usability of the SAP GUI help and allows adjustments of the help if needed (see also SAP Note [487546](#)).
- SAP GUI for Windows now offers a [product page](#) on SAP Help Portal. The product page contains links to all relevant SAP GUI documents.
- Administrators can decide not to install the local SAP GUI help, but instead use the help from SAP Help Portal or a help deployed on a local web server. See SAP Note [487546](#) for more information.

## **SAP GUI Options Dialog: Restore & Clean-up**

A new page ("Restore & Clean-up") in the options dialog allows restoring SAP GUI default settings and delete locally stored files conveniently. The previously existing "Restore Defaults" button in the footer has been removed.

## **Connection to Message Servers**

The new API provided in SAP Note [2576243](#) ("List of application server and logon group with full qualified hostnames") is supported. This means that SAP GUI gets the fully qualified hostnames of the application servers from the message server. With this approach, sometimes incorrect "guessing" of domain extensions no longer happens.

## **Extended Platform Support for Individual Components**

- Desktop Office Integration supports Office 2019 (see SAP Note [722513](#))



## CHANGED DEFAULT SETTINGS

- The "Workspace View" is the new default view in SAP Logon (Pad). This view is best suited for the usage of SAP UI Landscape files (which may contain multiple workspaces). "Default view" means that if no other selection has been made by the user or via installation settings, SAP Logon (Pad) will be displaying this view. It also means that a user selection that differs from the previous default view will be respected during an upgrade.
- The default setting for Secure Network Communication for newly created connections in SAP Logon is now "On" if
  - An SNC product is installed on the client PC (environment variable SNC\_LIB is defined) and
  - The SAP system supports Secure Network Communication.
- The default setting for the display of warning messages when a central landscape cannot be loaded, but a valid file can be retrieved from the local cache was changed so that end-users by default no longer get a warning message. See SAP Note [2257512](#) for more information.

## NO LONGER SUPPORTED / AVAILABLE

- Enjoy / Streamline / Tradeshow / SystemDependent: These themes have been removed from the delivery of SAP GUI for Windows as of release 7.60. You can instead use one of the other themes (like the default theme Belize). If Enjoy or one of the other themes mentioned before was selected prior to an upgrade, the default theme (Belize) is used instead.
- saplogon.ini: The saplogon.ini format is no longer supported as of SAP GUI for Windows 7.60. Since SAP GUI for Windows 7.40 a new connection format ("SAP UI Landscape") is available. This new format became the default format in SAP GUI for Windows 7.50 and replaces the saplogon.ini format. See the "SAP Front End Installation Guide" or the "SAP UI Landscape Configuration Guide" for more information on how to use "SAP UI Landscape". In release 7.60 the functionality for creating and reading saplogon.ini is still available for compatibility reasons with other components, but the usage in SAP GUI for Windows is no longer supported.
- Visual Enterprise Viewer: This component is no longer part of the Presentation DVD. If you need the Visual Enterprise Viewer, you can download it individually from SAP Support Portal and add it to an existing NWSAPSetup Installation server. Then you can create an installation package containing both components. For more information, see the SAP Frontend Installation Guide.
- The component "SAP Audit Management" is obsolete and has been removed from the SAP GUI Installation (see SAP Note [2185469](#) for more information).