



# Data Protection & Privacy with SAP BW/4HANA and SAP BW

## Overview

Product Management SAP Enterprise Data Warehousing, SAP SE  
March 2020

PUBLIC

# Disclaimer

SAP does not provide legal advice. The information in this presentation is only about technical features which might help a customer to become compliant with data protection regulations. To help the audience understanding the approach and the need, some context information is given without claiming completeness or correctness.

The information in this presentation is confidential and proprietary to SAP and may not be disclosed without the permission of SAP. Except for your obligation to protect confidential information, this presentation is not subject to your license agreement or any other service or subscription agreement with SAP. SAP has no obligation to pursue any course of business outlined in this presentation or any related document, or to develop or release any functionality mentioned therein.

This presentation, or any related document and SAP's strategy and possible future developments, products and or platforms directions and functionality are all subject to change and may be changed by SAP at any time for any reason without notice. The information in this presentation is not a commitment, promise or legal obligation to deliver any material, code or functionality. This presentation is provided without a warranty of any kind, either express or implied, including but not limited to, the implied warranties of merchantability, fitness for a particular purpose, or non-infringement. This presentation is for informational purposes and may not be incorporated into a contract. SAP assumes no responsibility for errors or omissions in this presentation, except if such damages were caused by SAP's intentional or gross negligence.

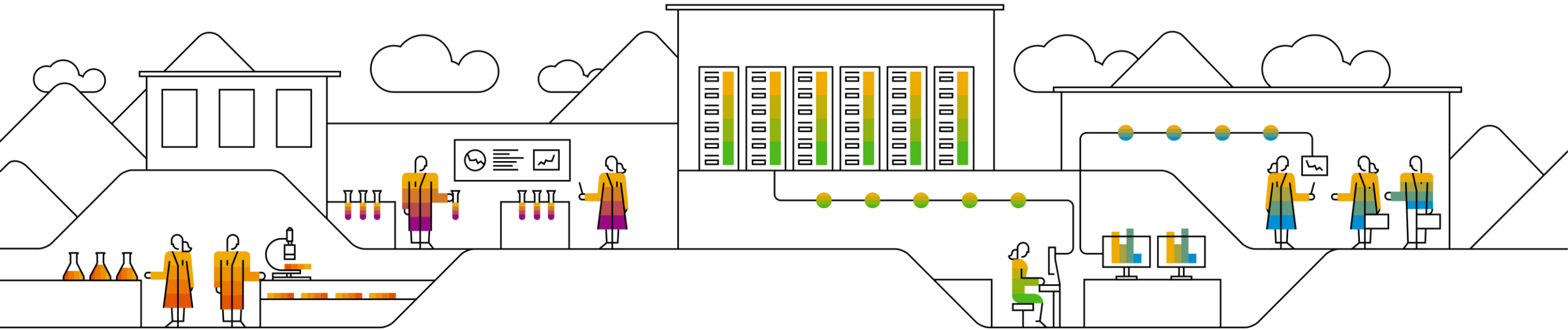
All forward-looking statements are subject to various risks and uncertainties that could cause actual results to differ materially from expectations. Readers are cautioned not to place undue reliance on these forward-looking statements, which speak only as of their dates, and they should not be relied upon in making purchasing decisions.

# Agenda

- (1) “BW” features to support GDPR**
- (2) What is new in BW/4HANA 2.0?**
- (3) Demo: Data Protection Workbench**
- (4) Outlook**



# “BW” features to support GDPR



# SAP BW, SAP BW/4HANA and General Data Protection Regulation (GDPR)

## What is the General Data Protection Regulation (GDPR)?

- The General Data Protection Regulation ([EU GDPR](#)) is a new European Union (EU) **law that gives residents much better protection and control of their personal data**. It will **regulate the data companies in and outside the EU can collect**, store, and transfer – as well as how they use it.
- All companies that process EU resident data must be ready to comply when the GDPR **enforcement starts on May 25, 2018**.

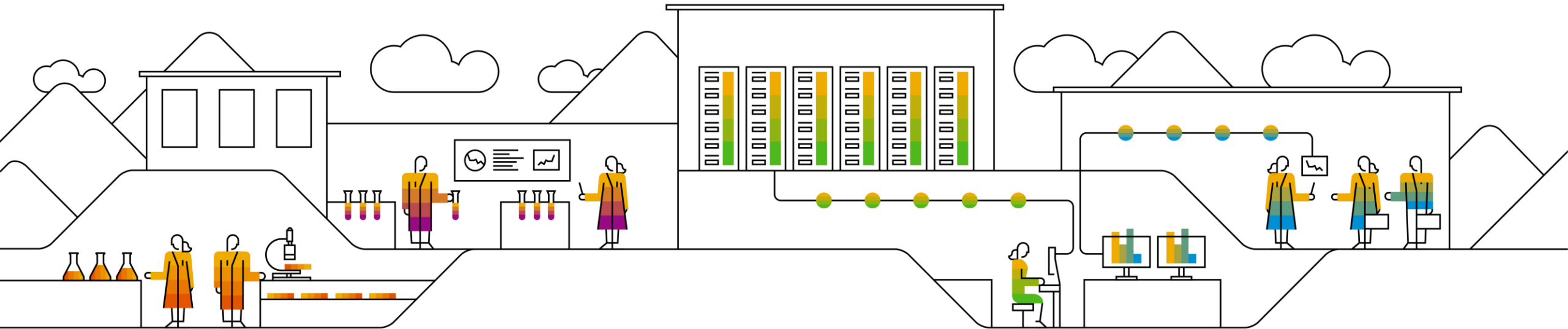
**SAP BW/4HANA and SAP BW deliver Data Protection and Privacy (DPP) related features, which help customers to comply with GDPR, see security guide.**

- Read access logging
- Information report
- Deletion of personal data
- Log changes



# What's new in BW/4HANA 2.0?

## Data Protection Workbench



# Data Protection Workbench - Motivation

## Situation today

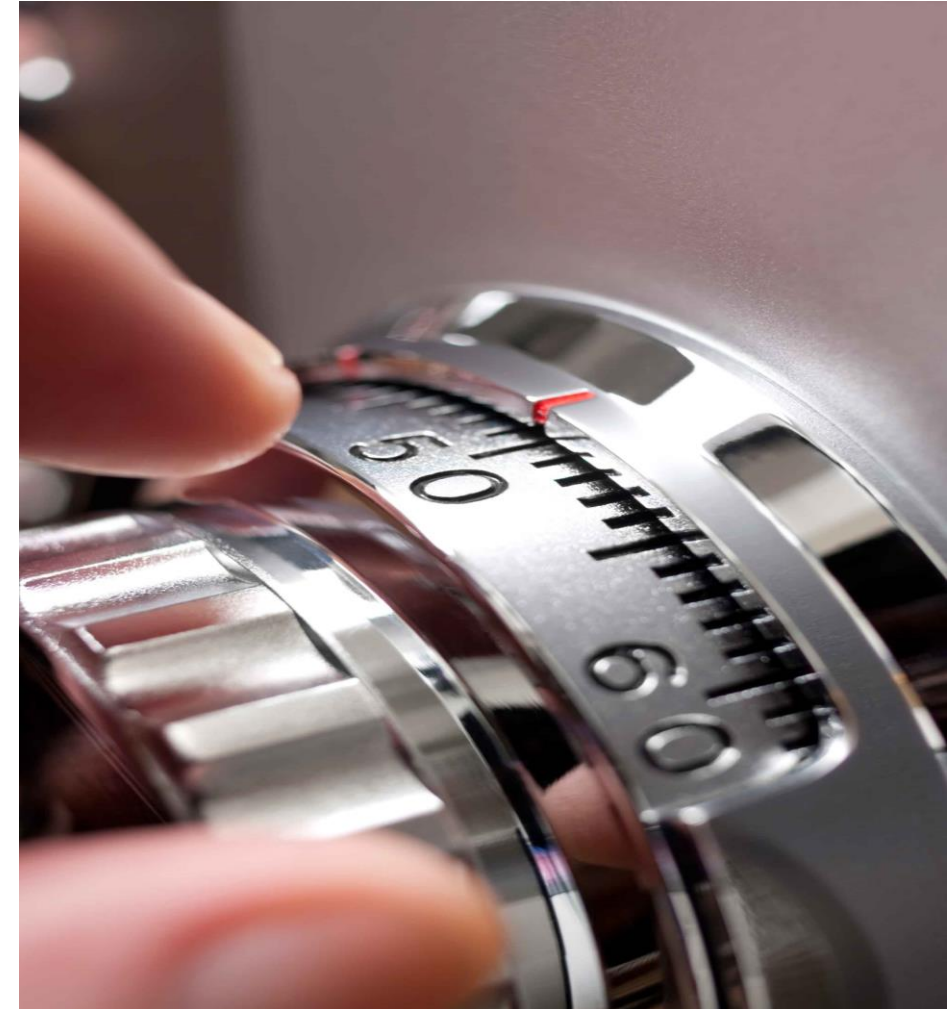
- Personal data is increasingly protected by laws (e.g. [EU GDPR](#))
- SAP BW/4HANA offers capabilities for Data Protection & Privacy support (see [security guide SAP BW/4HANA](#))
- Generic deletion capabilities in SAP BW/4HANA are independent of Business Suite handling
- SAP ILM ensures retention management in operational systems and is used to support data protection & privacy compliance

## Challenge

- Improved support and tight integration of SAP BW/4HANA with SAP ILM and Business Suite to delete replicated personal data in SAP BW/HANA after the end of purpose of the data.

## Approach

- SAP ILM notification framework allows to persist notifications of deleted (personal) data during ILM processes
- Replicate notifications from SAP ILM to SAP BW/4HANA
- Data Protection Workbench supports:
  - Identify InfoProviders containing personal data
  - Selective deletion of corresponding transactional- and master data records



# Data Protection Workbench - Process

## Feature Description

### SAP ILM

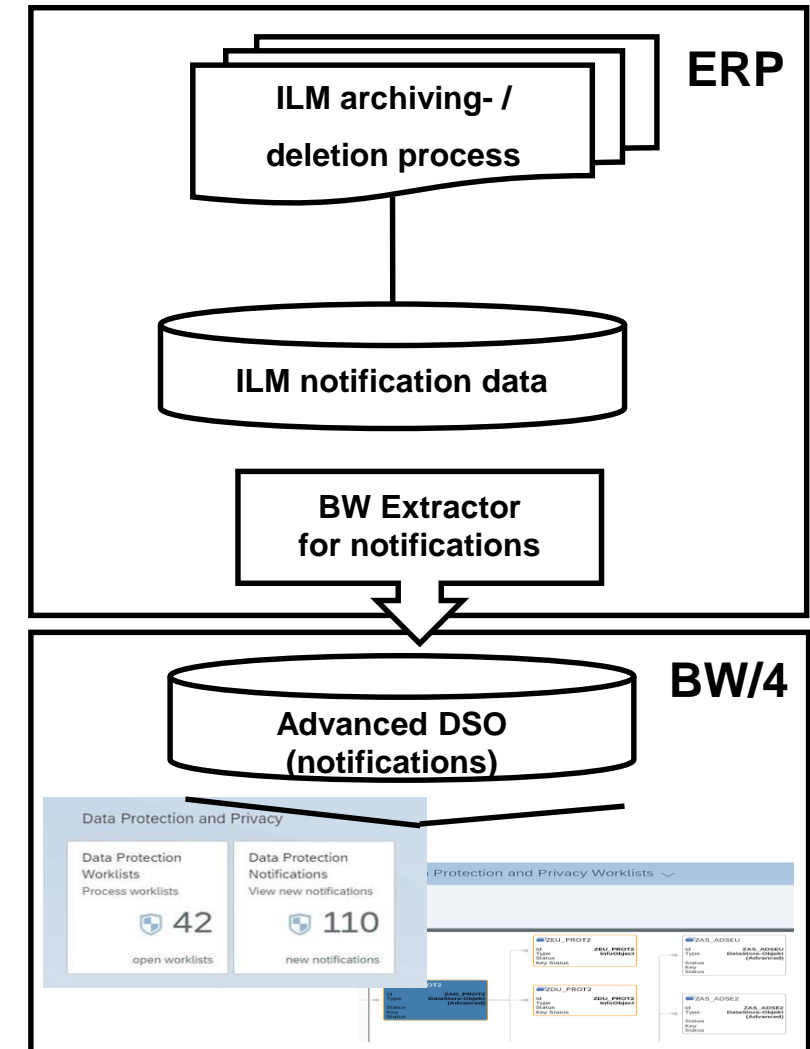
- SAP ILM persists events during SAP ILM processes (e.g. deletion of personal data)
- Mapping of SAP ILM object (e.g. ‚Sales Order‘) to SAP BW/4HANA DataSource allows identification of relevant data targets in SAP BW/4HANA

### Data Protection Workbench

- Persist notifications from SAP ILM into a SAP BW/4HANA Data Store Object
- Seamless integration into Fiori-based SAP BW/4HANA Administration Cockpit
- Grouping of notifications into worklists according to subject matters to orchestrate the deletion process
- Identification of InfoProviders along a data flow containing the data to be deleted
- Documentation of worklist processing status (for legal auditing)

### Benefits

- Integrated solution to consistently delete replicated data from supported operational SAP source systems to reduce administration effort
- Modern UI seamlessly integrated in Administration Cockpit





# Data Protection Workbench – Process (from SAP BW/4HANA 2.0 SP04)

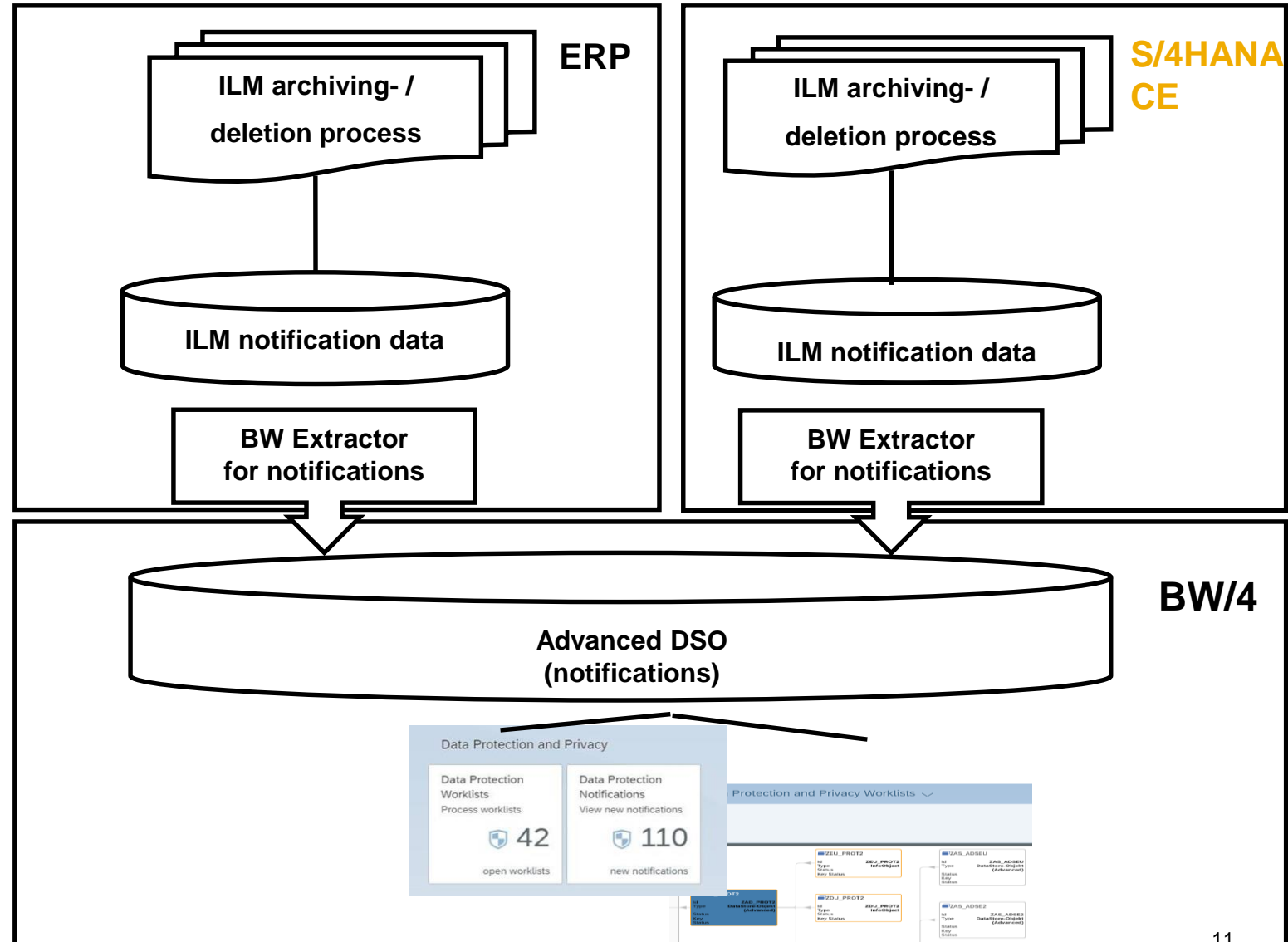
## Feature Description

### Enhancements Data Protection Workbench in SAP BW/4HANA 2.0 SP04

- Notifications from S/4HANA Cloud can be extracted and processed
- S/4HANA Cloud provides CDS view for extraction of notifications
- Notifications are stored in a separate ADSO
- Support of write-optimized ADSOs without key column
- Authorization object (S\_RS\_DPPWL) to restrict usage of Worklists in Data Protection Workbench
- Support of Start Routine in a Transformation

### Benefits:

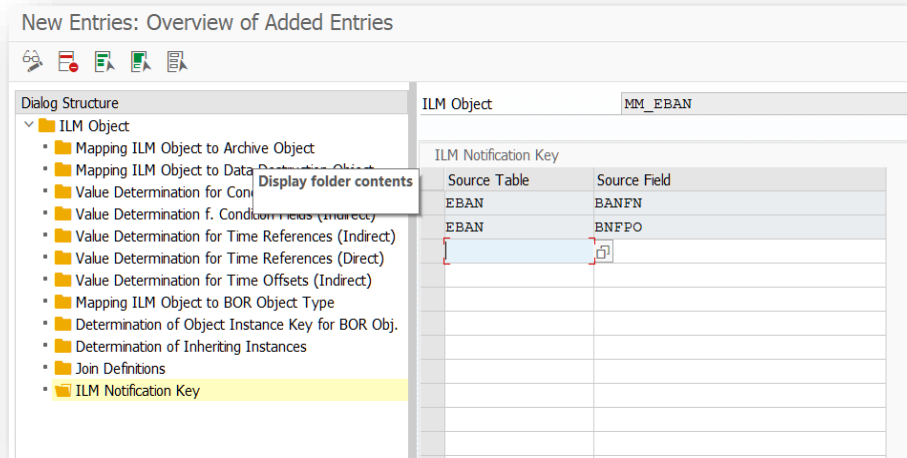
- Extending protection of sensitive data in SAP BW/4HANA to S/4HANA Cloud



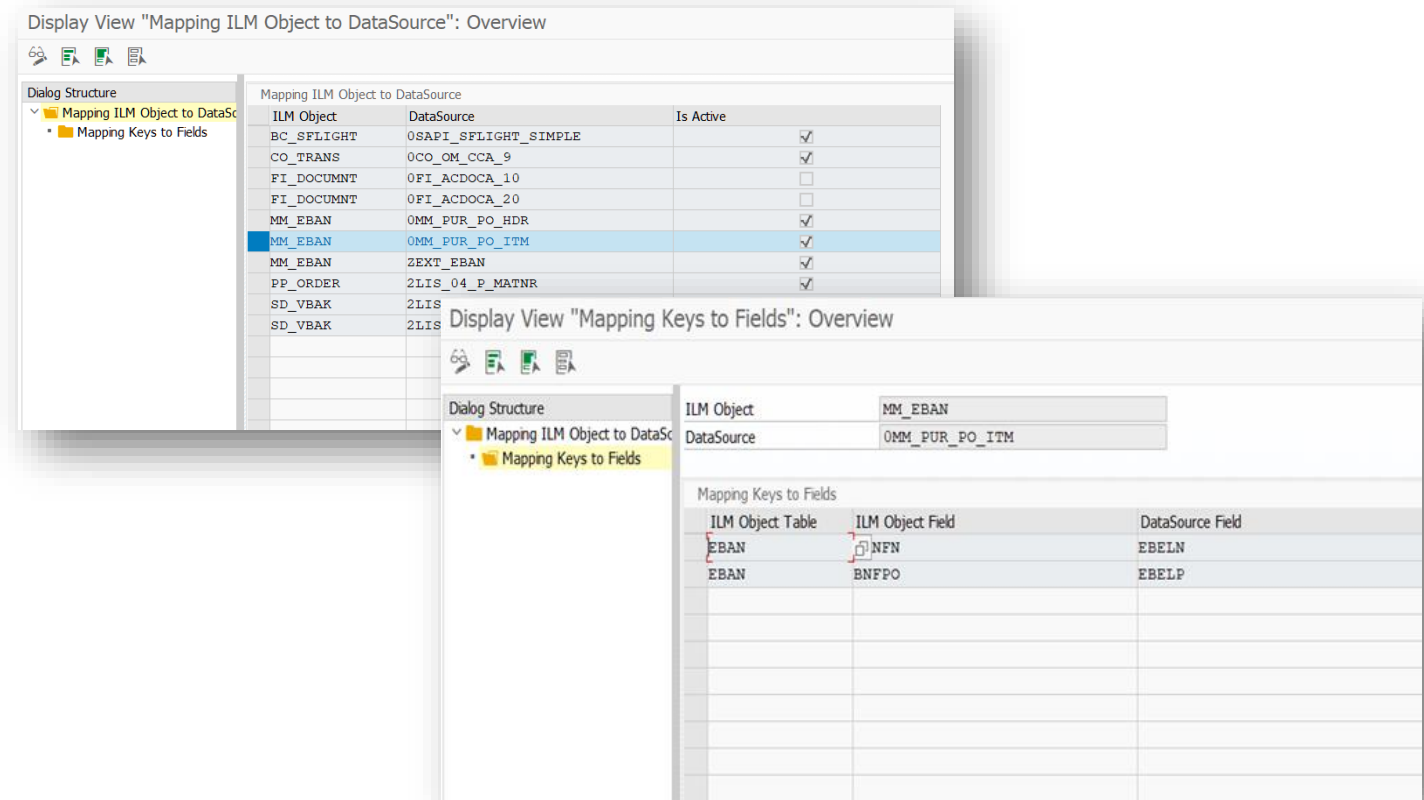
# ILM Objects and Enablement for BW Data Protection Notifications

## Background

- ILM Notification events are transferred to BW based on BW DataSources
- SAP Applications enable / configure relevant ILM objects for the ILM Notification Framework and configure the mapping to BW DataSources

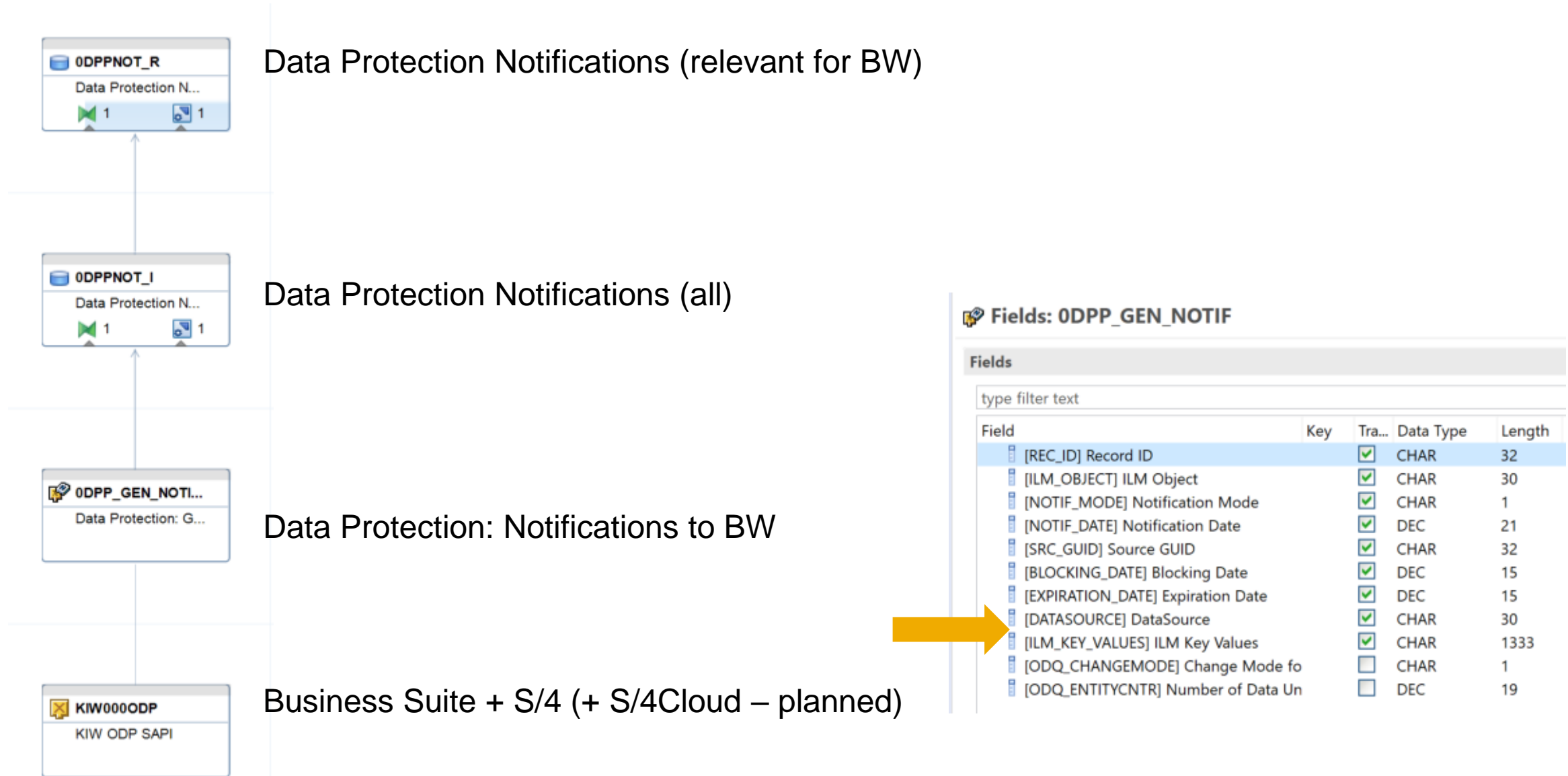


(1) ILM Notification Key customizing to enable ILM object for ILM Notification Framework delivered by SAP



(2) Mapping of ILM Objects to BW DataSources to enable BW DP Notification delivered by SAP

# Example: Dataflow from Business Suite to BW/4



# Data Protection Workbench - Timelines

## Availability for SAP BW

- SAP BW/4HANA 2.0 SP0 - RTC 25.02.2019 Web-based Workbench [see help.sap.com](https://help.sap.com)
- SAP BW 7.50 SP15 - RTC 14.06.2019 SAPGUI-based Workbench [see help.sap.com](https://help.sap.com)

## Requirements of source systems

- Business Suite: first shipment with support of notifications with EhP8 SP12
  - Initial set of supported ILM objects (# ~120)
  - List of supported ILM objects is documented via note [2748685](https://support.sap.com/2748685)
- SAP S/4HANA OP – 1909 FSP1 (or higher)
- SAP S/4HANA CE – SAP S/4HANA Cloud 2002 (or higher)

## More Information

### SAP S/4HANA 1909 FPS01 or higher

For more information, see the application help for [SAP S/4HANA](https://help.sap.com) under:

- [Deleting Personal Data in SAP BW/4HANA](#)
- [ILM Notifications](#)

### SAP S/4HANA Cloud 2002 or higher

For more information, see the application help for [SAP S/4HANA Cloud](https://help.sap.com) 2002 or higher under:

- [Deleting Personal Data in SAP BW/4HANA](#)
- [ILM Notifications](#)

# Thank you.

**SAP Product Management Sap Enterprise Data Warehousing**

# Appendix

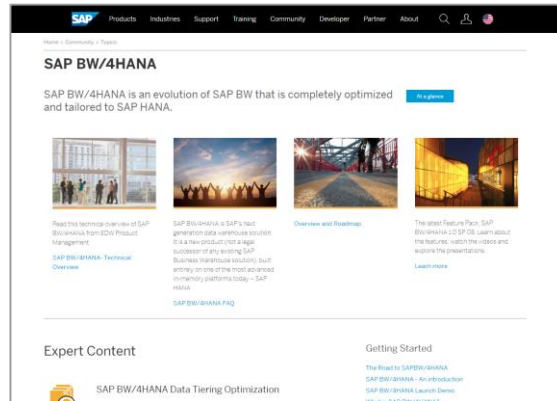




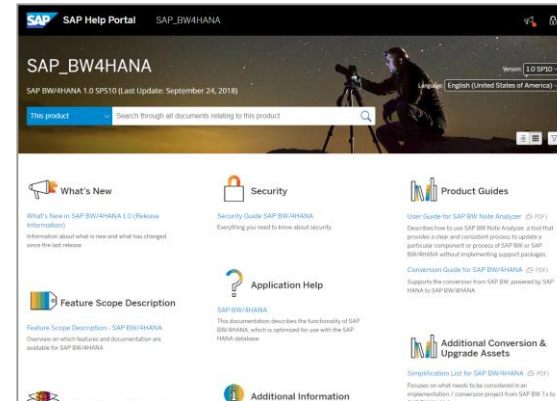
# SAP BW/4HANA



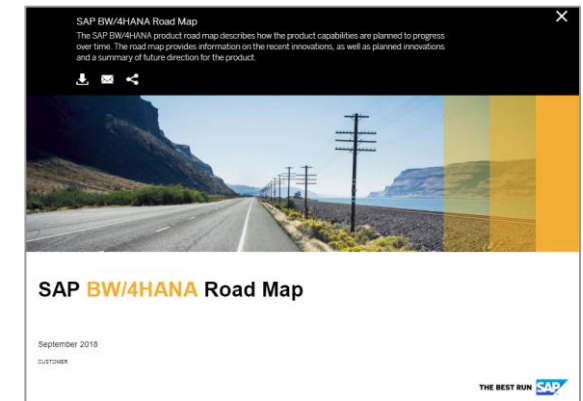
**Home Page**  
<https://sap.com/bw4hana>



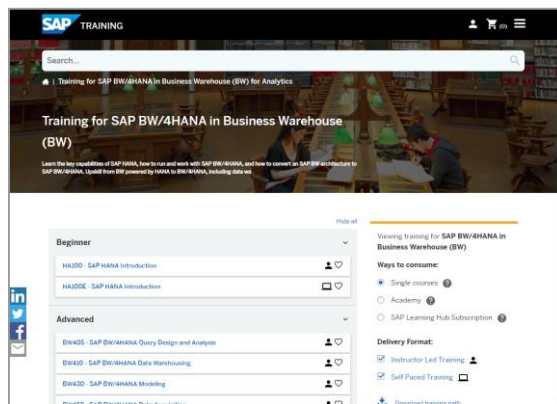
**Community / Product Page**  
<https://sap.com/bw4hana10>



**Documentation**  
<https://help.sap.com/bw4hana10>



**Product Roadmap**  
<https://sap.com/roadmaps>



**Training & Certification**  
<https://training.sap.com/>

Get Started  
[Free Learning @ openSAP](#), [Free Trial](#)  
Get Help  
[FAQ](#), [Q&A](#), [Community Wiki](#), [Support](#), [Availability](#)



Read & Learn More  
[SAP Blogs](#), [Community Blogs](#), [Learning Journey](#)  
Transition from SAP BW  
[Blog](#), [SAP Activate Roadmap](#), [SAP Readiness Check](#)

Related Solutions  
[SAP HANA](#), [SAP Data Hub](#), [SAP Analytics Cloud](#)



Watch  
[Demos & Tutorials](#),  
[YouTube Channel](#),  
[SAP HANA Academy](#)



Share & Follow  
[#BW4HANA](#),  
[#TheFutureofDW](#)



Follow us



[www.sap.com/contactsap](http://www.sap.com/contactsap)

© 2019 SAP SE or an SAP affiliate company. All rights reserved.

No part of this publication may be reproduced or transmitted in any form or for any purpose without the express permission of SAP SE or an SAP affiliate company.

The information contained herein may be changed without prior notice. Some software products marketed by SAP SE and its distributors contain proprietary software components of other software vendors. National product specifications may vary.

These materials are provided by SAP SE or an SAP affiliate company for informational purposes only, without representation or warranty of any kind, and SAP or its affiliated companies shall not be liable for errors or omissions with respect to the materials. The only warranties for SAP or SAP affiliate company products and services are those that are set forth in the express warranty statements accompanying such products and services, if any. Nothing herein should be construed as constituting an additional warranty.

In particular, SAP SE or its affiliated companies have no obligation to pursue any course of business outlined in this document or any related presentation, or to develop or release any functionality mentioned therein. This document, or any related presentation, and SAP SE's or its affiliated companies' strategy and possible future developments, products, and/or platforms, directions, and functionality are all subject to change and may be changed by SAP SE or its affiliated companies at any time for any reason without notice. The information in this document is not a commitment, promise, or legal obligation to deliver any material, code, or functionality. All forward-looking statements are subject to various risks and uncertainties that could cause actual results to differ materially from expectations. Readers are cautioned not to place undue reliance on these forward-looking statements, and they should not be relied upon in making purchasing decisions.

SAP and other SAP products and services mentioned herein as well as their respective logos are trademarks or registered trademarks of SAP SE (or an SAP affiliate company) in Germany and other countries. All other product and service names mentioned are the trademarks of their respective companies.

See [www.sap.com/copyright](http://www.sap.com/copyright) for additional trademark information and notices.