



Implementation of SAP Engineering Control Center

A PLM Service

CUSTOMER



Agenda

Service overview

Scope

Delivery approach

Implementation of Engineering Control Center

- ▶ The “SAP Engineering Control Center Implementation Service – Startup package” enables you to streamline your document management by leveraging the SAP Engineering Control Center as a holistic integration platform with intuitive but comprehensive functionality. Profit from the efficient base implementation and enjoy a powerful, highly customizable and future-proof environment.

Business needs

- You have to manage increasing product complexity by enabling cross-discipline collaboration
- You want to use template-based standardized folder structures
- You want to simplify the access and communication of your office documents and SAP
- You want to increase user adoption by offering drag-and-drop and shortcuts for SAP objects
- You need graphic support to accelerate your processes to find your PLM data

Delivery approach and scope

- Installation and initial configuration of SAP Engineering Control Center in a test environment
- Activation of pre-configured document types
- Activation of MS Office Integration including generic transfer of attributes to MS Word
- Integration of 3D Visual Enterprise Viewer
- Exemplary linking of documents with existing material masters
- Functional testing and knowledge transfer of basic ECTR functionality
- Perform Fit-Gap-Analysis and High-Level Solution proposal to close gaps
- Definition of scope for following implementation or rollout projects

Value and benefits

- Increased efficiency through the elimination of redundancies and disconnected storage
- Improved data quality and lower costs due to higher user adoption
- Highly customizable integration platform for meeting future challenges

Pricing, Links

- Price: 22,700 Euro*
- SAP Service No.: 50127548
Contact:
plmservices@sap.com

Related Services

- <http://go.sap.com/services/plm-r-d-consulting.html>

**Standard price for Germany. Pricing for other countries available on request.*



Agenda

Service overview

Scope

Delivery approach

Service content (1/2)

1. Installation of Engineering Control Center 5.1

- Installation of frontend components of SAP Engineering Control Center on one reference workstation
- Answering of customer installation-related questions and execute the Software installation of Engineering Control Center 5.1 in a local network at the customers site.

2. Startup configuration

- Implementation of basic settings in SAP ECTR 5.1 on **one** backend system at customer's site and/or via remote assistance.
- Basic settings defined in BC /DSCSAG/ECTR_WRD_XLS_PPT comprise”
 - Activation of 3 preconfigured document types
 - Elementary functions for document check-in / check-out
 - One template for per Office application (Word, Excel, PowerPoint)
 - An exemplary status network for all three document types
 - An exemplary numbering system used for all document types
 - One Exemplary class per document type

3. System test including:

- Functional test of the configured system at customer site and/or via remote assistance.
- Adoption of representative documents
- A functional test
- A multi-user test
- Knowledge Transfer



Service content (2/2)

4. One-day Knowledge transfer at customer's site for PLM project team with up to 3 participants, including following topics:

- SAP ECTR 5.1 basic functions at a glance
- User interface and folder structure
- Document management and handling
- Classification and search

5. Fit/Gap-analysis

Workshop for an assessment of how ECTR can support the customer's business

- Which business needs are met by standard SAP Engineering Control Center?
- Are there any gaps that cannot be covered by standard SAP Engineering Control Center?

High-level solution proposal of how to close the gaps

Rough effort estimation of an implementation project



Solution Scope

The solution contains the following best practices:

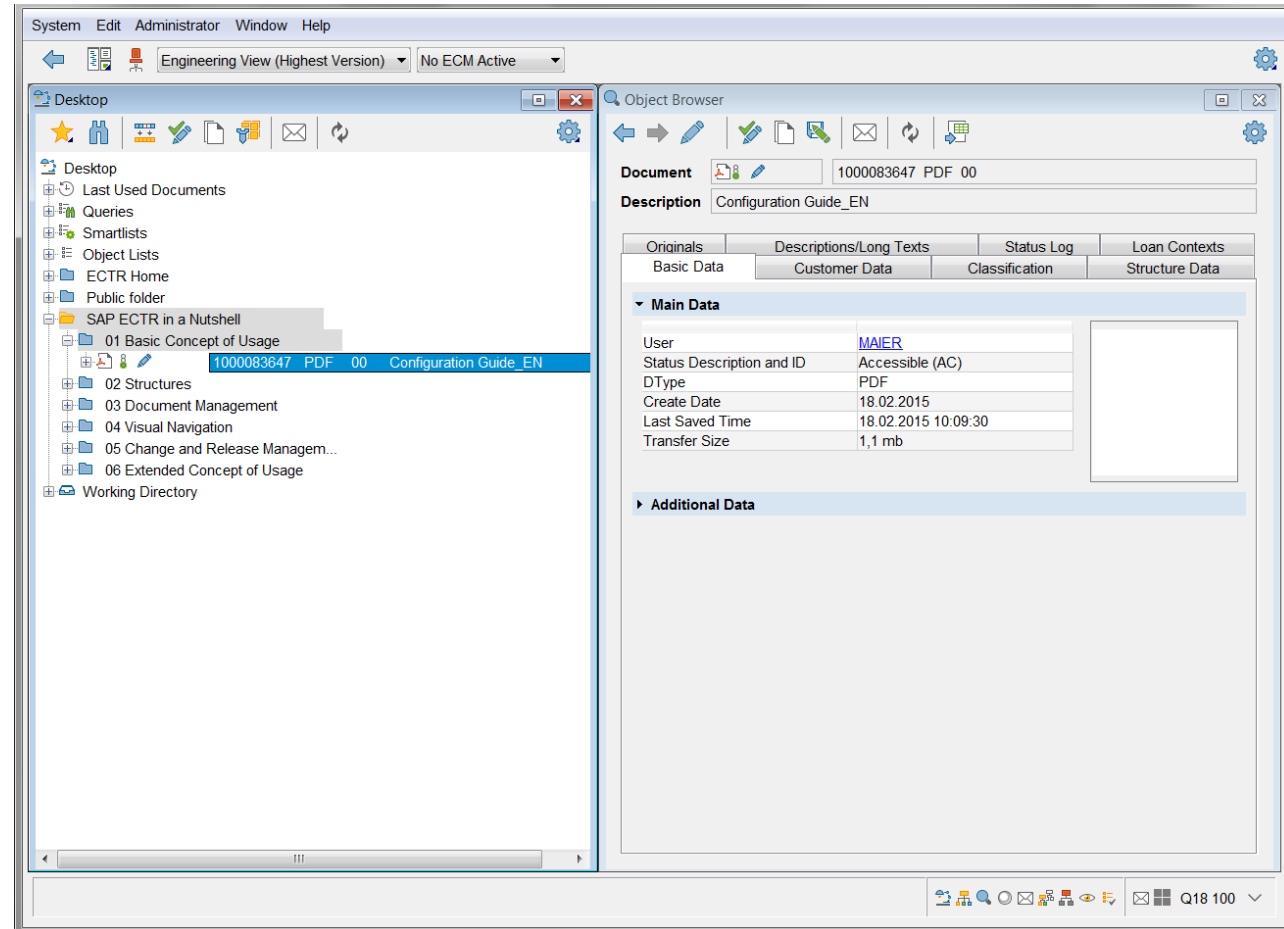
- Folder structure and easy document handling
- Enhanced Search & Find capabilities
- Simple document management
- Advanced document management
- Classification and Search



Best Practices

Folder structure and easy document handling

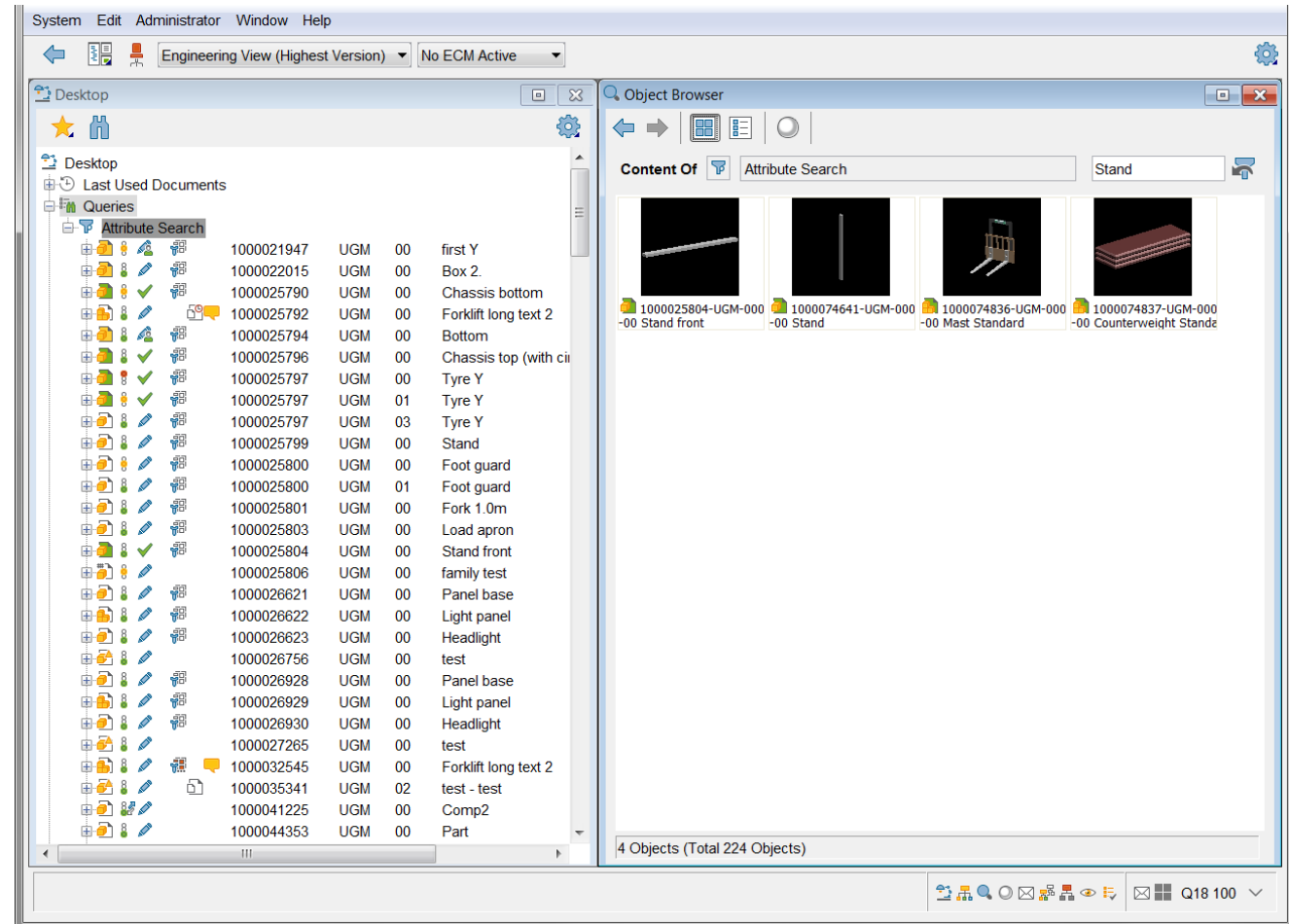
- Easy to handle windows-like folder structure
- Simple document creation through drag & drop or templates
- Automatic attribute transfer
- Work with and edit your files directly out of SAP Engineering Control Center



Best Practices

Search & Find

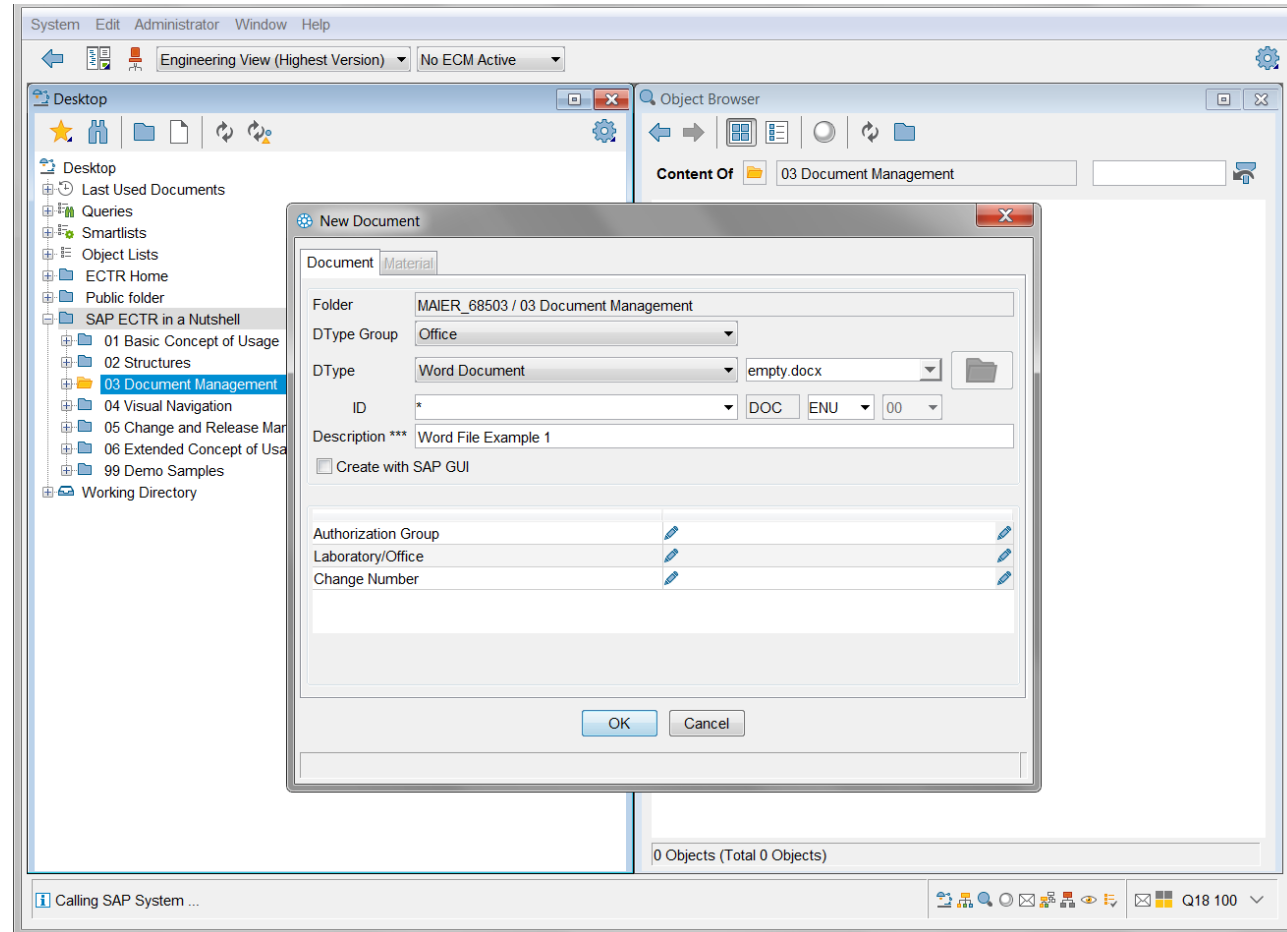
- Simply designed search functionalities (e.g. STRG+F)
- Search for documents using queries with specific attributes
- Manage hit lists by using filters
- Use visual support through thumbnails and previews when searching for objects



Best Practices

Simple document management

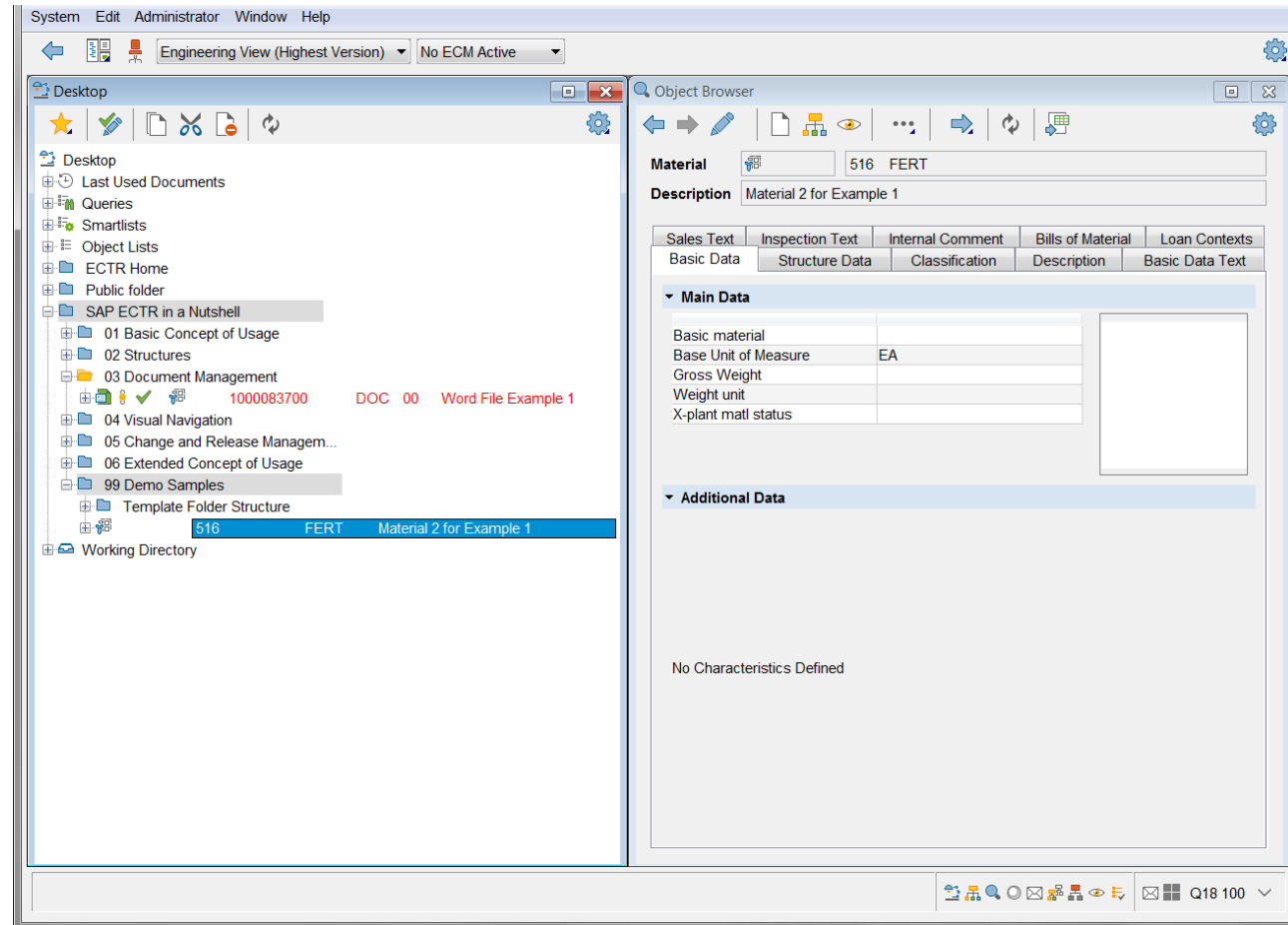
- Create documents inside ECTR using templates
- Edit documents directly from SAP ECTR using MS Office Integration
- Fast and easy status changes
- Intuitive versioning



Best Practices

Advanced document management

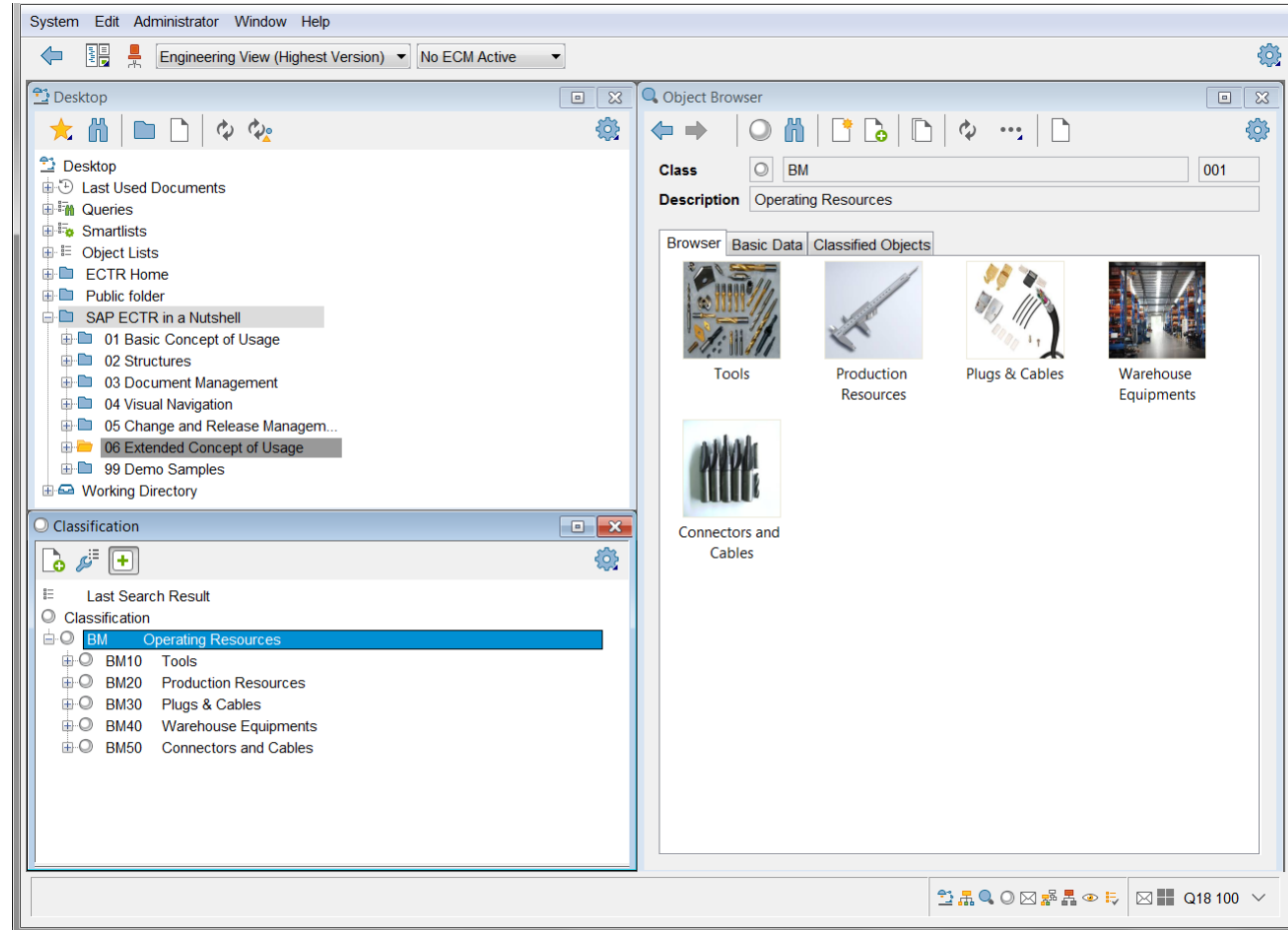
- Create object links between multiple business objects using simple drag & drop functionality
- Gain a 360° perspective for your product data



Best Practices

Classification and Search

- Manage classification from a one-view experience
- Gain visual support through thumbnails and previews
- Use queries to find materials in a browser-like fashion



Service Scope

- 1. Installation of Engineering Control Center 5.1
- 2. Startup configuration
- 3. System test
- 4. One-day knowledge transfer
- 5. Fit-Gap-Analysis
(up to 2 days after one day knowledge transfer)



Which software is used

SAP Engineering Control Center 5.1

- Backend Installation package: SAPK-510COINECTR

Frontend Components:

- Engineering Control Center 5.1 front end including Add-in to Office and Visual Enterprise Viewer
- Client: SAP GUI - Version 7.30 and above
- SAP Visual Enterprise Viewer – Version 8.0.101 (8.0 SP1 MP1)
- Microsoft Office

Further information please refer to: SAP Note [2049249](#) and consult the list of Software and Delivery Requirements document of the service

Integration points in scope

Integration point	From Product/Solution	To Product/Solution	Type	Description
Short description of integration point	From SAP product that integrates	To SAP product that integrates	Technical nature of integration e.g. ALE	Longer description of scope of integration perhaps covering business objects or data
ECTR Front end Office Integration	Microsoft Word, Excel, and PowerPoint	ERP	Add-on	The add-on is used to start the Engineering Control Center 5.1 and further interaction (e.g. creation and update of document info records) with SAP system.

Remark: Add-on is supported for Office 2003 (32 bit), Office 2007 (32 bit), Office 2010 (32 and 64 bit), Office 2013 (32 and 64 bit), and Office 2016 (32 and 64 bit),

Agenda

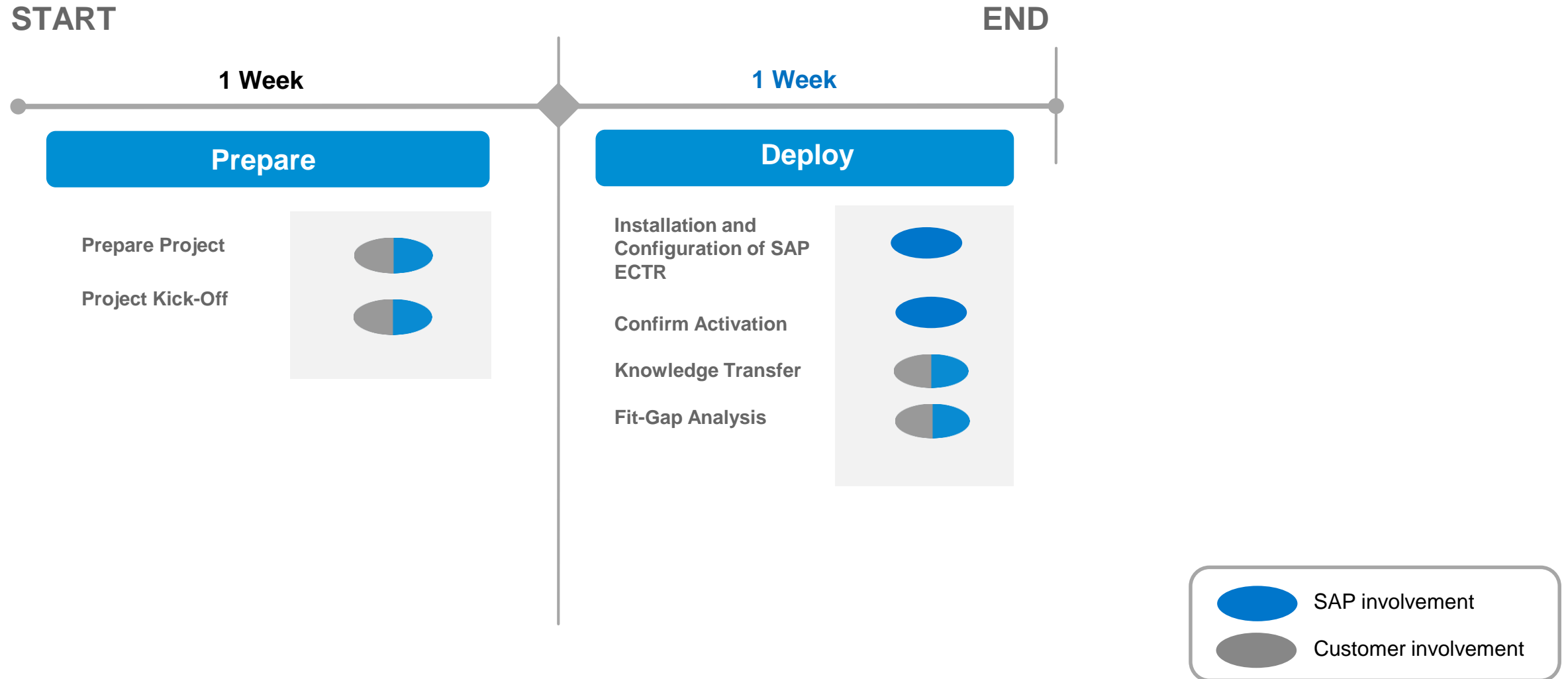
Service overview

Scope

Delivery approach

Typical project plan

Shows main project activities



Responsibilities

What does SAP deliver?

- Installation check
- Activation of Solution
- Confirm Activation
- Knowledge Transfer to Key User
- Assistance for Testing

What do customers have to do?

- Provide the IT infrastructure (server)
- Install the SAP application on the development and production environments
- Provide fixed contact people in the business and IT departments
- Attend Key User Knowledge Transfer
- Conduct end-user training

Thank you.



PLM Services

SAP Product Lifecycle
Management Consulting

SAP Deutschland SE & Co. KG

Hasso Plattner Ring 7
69190 Walldorf, Germany

plmservices@sap.com



Run Simple