



SAP Customer Success Story

Automotive Consulting Solutions

Print form for the Sales and Distribution process
Global Transport Label
- General Motors -

Agenda

GETRAG Corporate Group

Description of the Function

The Function in the System

Technical Information



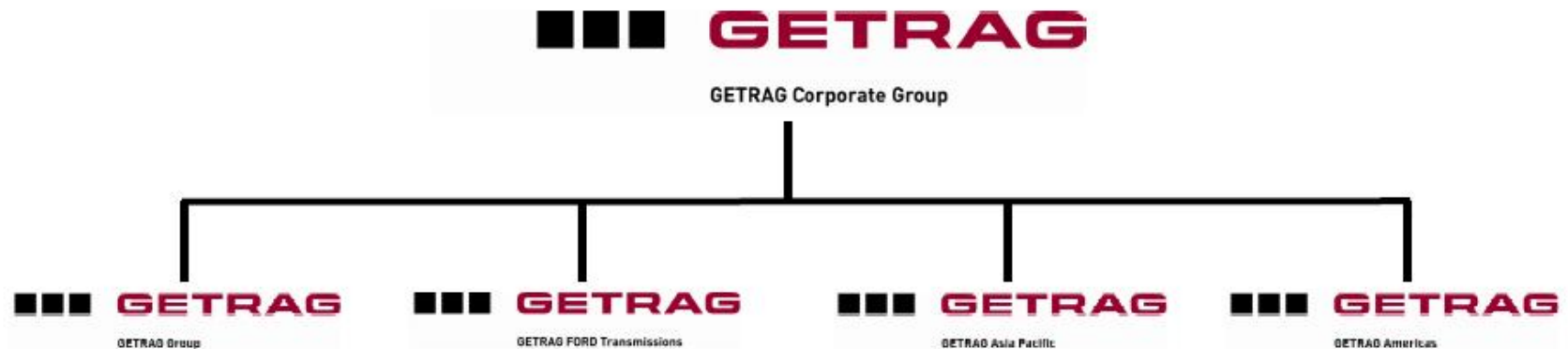
Presentation GETRAG Corporate Group



Precision. Passion. Partnership.

Structure of the GETRAG Corporate Group

GETRAG Group, GETRAG FORD Transmissions, GETRAG Asia Pacific, and GETRAG Americas combine their strengths under the umbrella of the GETRAG Corporate Group and the brand name GETRAG.



Management of the GETRAG Corporate Group



f.l.t.r. Mihir Kotecha, Tobias Hagenmeyer, Dieter Schlenkermann, Hans-Jürgen Förster

- Tobias Hagenmeyer, President
- Dieter Schlenkermann, CEO GETRAG Group
- Mihir Kotecha, CEO GETRAG FORD Transmissions
- Hans-Jürgen Förster, CFO

Brand message



Precision. Passion. Partnership.



Reliability and quality in
all that we do



Enthusiasm, innovation and
dedication of our employees



Trustful long-term relationships
and mutual respect

GETRAG Corporate Group in figures



Key facts 2006

Sales	2.4bn EUR
Global production	3m transmissions 0,9m axles
Employees	10,500*
In production	8,400
In product development	1,200

21 locations worldwide*

(* from 01.01.2007 plus 2,300 employees in China, less 400 employees GETRAG SynchronTechnik)

GETRAG Corporate Group worldwide



23 locations worldwide in Europe, North America and Asia

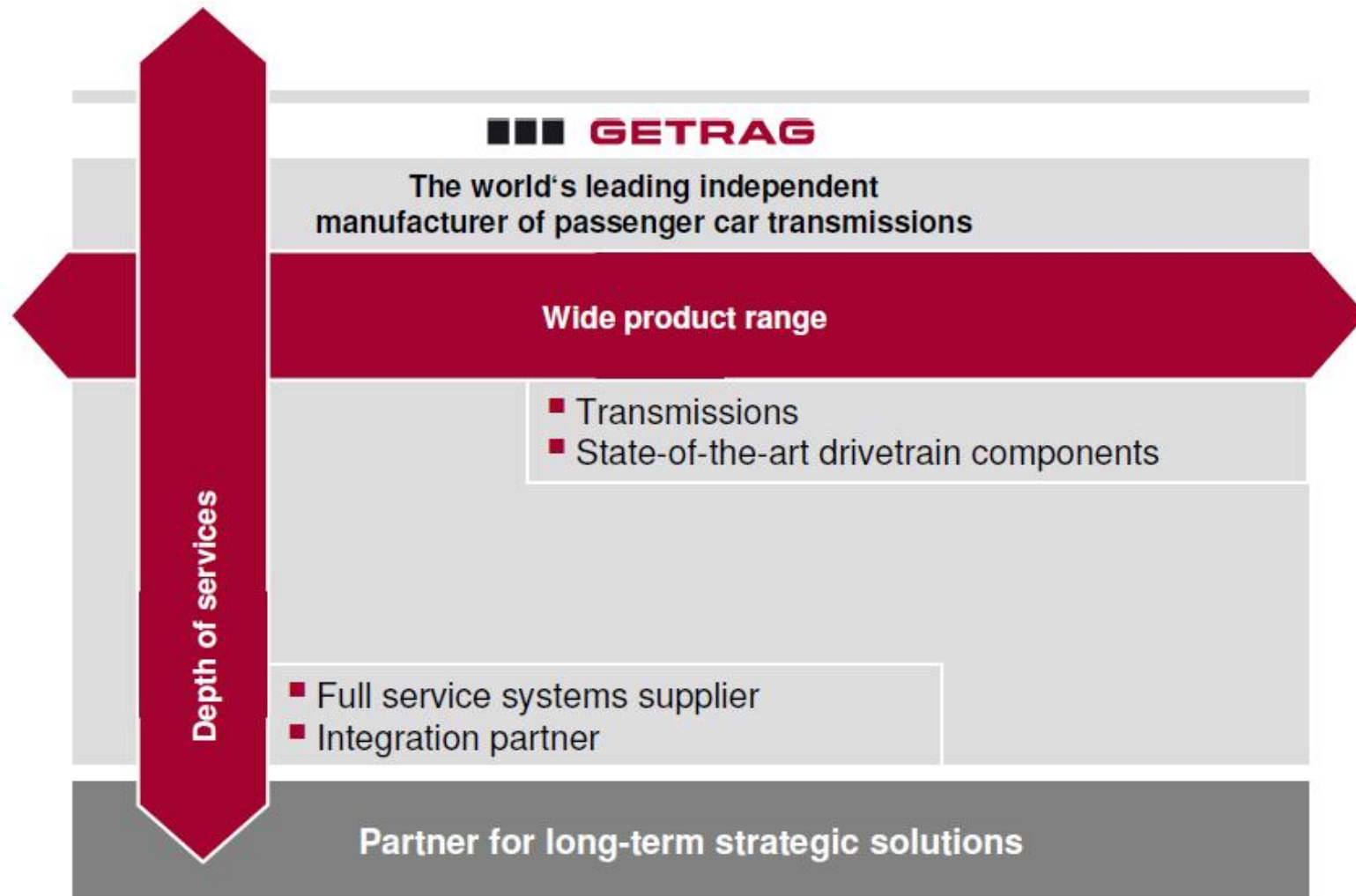
14 individual companies

12,400 employees

including 1,200 in product development

(05/2007)

Service range



Product range



Transmissions



Drivetrain



Components

For passenger cars, SUVs, light commercial vehicles and motorcycles in all segments

Wide product range

Steadily growing product range

Product range



Transmissions

Manual transmissions (MT)

Automated manual transmissions (AMT®)

Dual clutch transmissions
GETRAG PowerShift
- Dry & wet

Hybrid systems

Infinitely variable transmissions (IVT)



Drivetrain

Active and passive front and rear axle differentials

Power Take-off Units

Transfer cases for all-wheel drive

Electric drives and fuel cell technology



Components

Timing gears

Transmission components

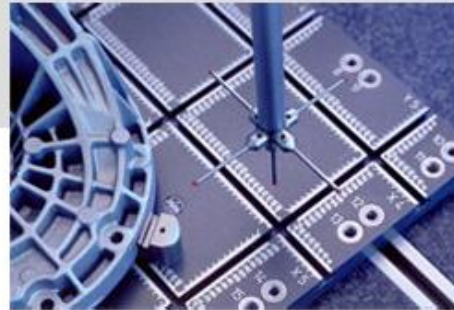
We deliver worldwide



Partner of all major automotive manufacturers worldwide

Audi	Chrysler	Foton	Mazda	Saturn
BMW	Cummins	Fudi Auto	Mercedes-Benz	Shen Yang
Buick	Daewoo	GM	MINI	Skoda
Brilliance Auto	Dangfeng	Harley Davidson	Mitsubishi	Smart
Cadillac	Dodge	Holden	Nissan	Southeast Auto
Caterpillar	Dongan	Jaguar	Opel	Suzuki
Changan	FAW Hongta	Jiangling Motor	Otosan	Toyota
Changfeng	Ferrari	JMC Landwind	Pontiac	Volvo
Chery	Fiat	Lancia	Porsche	VW
Chevrolet	Ford	Land Rover	Renault	

The 3 pillars of GETRAG quality

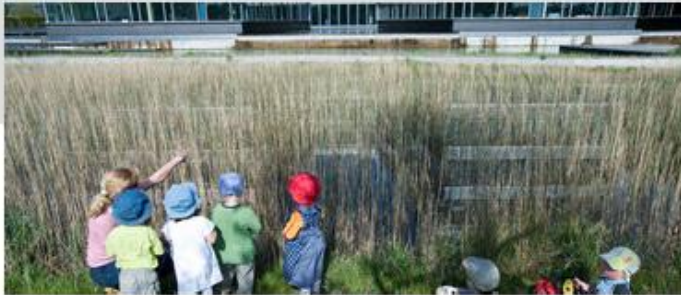


3 Quality is a never-ending race

- Advanced Product Quality Planning
- Zero defect program and error prevention
- Measurement, evaluation and continuous improvement of all business processes

All GETRAG sites are certified according to ISO/TS 16949

Environment & Safety



- Development of innovative drivetrain technologies
 - reduction of noise and emissions
 - use of recyclable materials
 - minimum use of natural resources

- Certification of the management system at all international sites according to ISO 14001

- Continuous enhancement of our systems according to EMAS in Europe and OHSAS 18001

GETRAG Getriebe- und Zahnradfabrik Hermann Hagenmeyer GmbH & Cie KG



GETRAG InnovationsCenter Untergruppenbach

Established January 1, 2002

Headquarters of the GETRAG Corporate Group

Central product development, research, testing, prototyping
and central departments

Further research and development sites in Europe and USA

Employees 680

Site management Hans-Ulrich Rau

Agenda

GETRAG Corporate Group

Description of the Function

The Function in the System

Technical Information

Solution

- **The Automotive Consulting Solution “Global Transport Label - General Motors -” is based on the General Motors recommendation GM 1724 and can be used as basis for the Global Transport Label implementation within the GME supply chain.**

Features

- **Two print forms (GLT and KLT) with the appropriate print program**
- **Print forms are developed with SMART FORM technology**
- **The reproduction of the 2-dimensional barcodes (PDF417) is implemented with SAP Smart Forms technology. Prerequisite OSS note 430887**
- **Labels can be reprinted separately, as output determination is on HU-Level**
- **Implementation in language English**
- **Documentation in language English**

Agenda

GETRAG Corporate Group

Description of the Function

The Function in the System

Technical Information

Figure: „Global Transport Label - GLT“

SHIP FROM: GETRAG S. p. A. Via dei Ciclamini 4 I-70026 MODUGNO (BARI) BA		SHIP TO: ADAM OPEL AG LKW Leitstelle K-131 D-65423 RUESSELSHEIM PLANT / DOCK: 72261 074		
QUANTITY: 5	MATERIAL HANDLING CODE: M0-01-05	KANBAN NUMBER: D176		
PART NUMBER: 24412510			SECURITY SIGN:	
LICENSE PLATE (1J):  UN 629797713 1001787421		SHIPMENT DATE: 17MAY2007 CONTAINER TYPE: X009409Y GROSS WEIGHT: 415 KG		
PART NUMBER SUPPLIER / ENGINEERING CHANGE LEVEL: 2870005202 / SHORT TEXT: 5+REAR GEAR-TRANSAXLE OPEL SUPPLIER ID / DELIVERY NOTE: 629797713 / 400007773 BATCH NUMBER:		PUS NUMBER: RU0664727T		

Figure: „Global Transport Label - KLT“

SHIP FROM: GETRAG S. p. A. Via dei Ciclamini 4 I-70026 MODUGNO (BARI) BA		SHIP TO: ADAM OPEL AG LKW Leitstelle K-131 D-65423 RUESSELSHEIM			SHIPMENT DATE: 17MAY2007	
PLANT/ DOCK: 72261 074					CONTAINER TYPE: X009409Y GROSS WEIGHT: 415 KG	
QUANTITY: 5	MHC: M0-01-05	KANBAN NO: D176	PUS: RU0664727T			
PART NUMBER: 24412510			SECURITY SIGN: 			
LICENSE PLATE (1J):  UN 629797713 1001787421			PART NUMBER SUPPLIER / ENGINEERING CHANGE LEVEL: 2870005202 / BATCH NUMBER:			

Agenda

GETRAG Corporate Group

Description of the Function

The Function in the System

Technical Information



Function

- Print form for the Sales&Distribution process
Global Transport Label
- General Motors -

AddOn / Modification

- AddOn

Availability of the function

- Project Solution

Automotive Consulting Solution available for basisrelease

- $\geq 4.6C$



Thank you for your attention!

- No part of this publication may be reproduced or transmitted in any form or for any purpose without the express permission of SAP AG. The information contained herein may be changed without prior notice.
- Some software products marketed by SAP AG and its distributors contain proprietary software components of other software vendors.
- Microsoft®, WINDOWS®, NT®, EXCEL®, Word®, PowerPoint® and SQL Server® are registered trademarks of Microsoft Corporation.
- IBM®, DB2®, DB2 Universal Database, OS/2®, Parallel Sysplex®, MVS/ESA, AIX®, S/390®, AS/400®, OS/390®, OS/400®, iSeries, pSeries, xSeries, zSeries, z/OS, AFP, Intelligent Miner, WebSphere®, Netfinity®, Tivoli®, Informix and Informix® Dynamic Server™ are trademarks of IBM Corporation in USA and/or other countries.
- ORACLE® is a registered trademark of ORACLE Corporation.
- UNIX®, X/Open®, OSF/1®, and Motif® are registered trademarks of the Open Group.
- Citrix®, the Citrix logo, ICA®, Program Neighborhood®, MetaFrame®, WinFrame®, VideoFrame®, MultiWin® and other Citrix product names referenced herein are trademarks of Citrix Systems, Inc.
- HTML, DHTML, XML, XHTML are trademarks or registered trademarks of W3C®, World Wide Web Consortium, Massachusetts Institute of Technology.
- JAVA® is a registered trademark of Sun Microsystems, Inc.
- JAVASCRIPT® is a registered trademark of Sun Microsystems, Inc., used under license for technology invented and implemented by Netscape.
- MarketSet and Enterprise Buyer are jointly owned trademarks of SAP AG and Commerce One.
- SAP, SAP Logo, R/2, R/3, mySAP, mySAP.com and other SAP products and services mentioned herein as well as their respective logos are trademarks or registered trademarks of SAP AG in Germany and in several other countries all over the world. All other product and service names mentioned are trademarks of their respective companies.