

SAP Integration and Certification Center

SAP Remote Access and Connectivity Service (SAP RAC)

PUBLIC

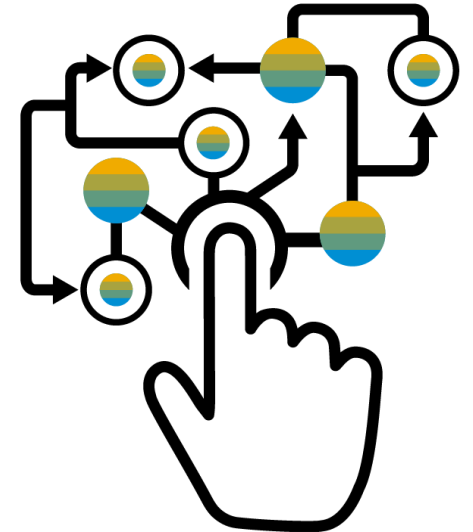
Introduction

Are you an SAP partner or ISV (Independent Software Vendor) looking for SAP system access to a variety of SAP-maintained systems to :

- Develop ABAP Add-ons
- Develop on SAP Cloud Platform
- Test integration to SAP Applications
- Explore SAP Applications and their features

What is SAP RAC Service?

[SAP RAC](#) (Remote Access and Connectivity) offers partners a quick and easy way for highly-flexible, low-cost and no-maintenance SAP system landscape. This service enables subscribers some ready-to-use SAP business solutions that can be instantly accessed to kick-start SAP projects or test their own products' integration. Subscribers can opt for the latest SAP solutions – such as SAP S/4HANA, SAP HANA, express edition, SAP Global Trade Services etc. Most of the SAP systems available with SAP RAC include the extensive database of IDES (Internet Demo and Evaluation System). They can choose between exclusive-use or low-cost shared systems.



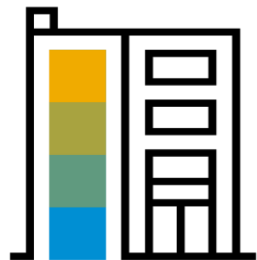
Traditional SAP system set-up vs SAP RAC

Partner/ISV needs

Plug and play SAP system access – adopt and certify innovations faster

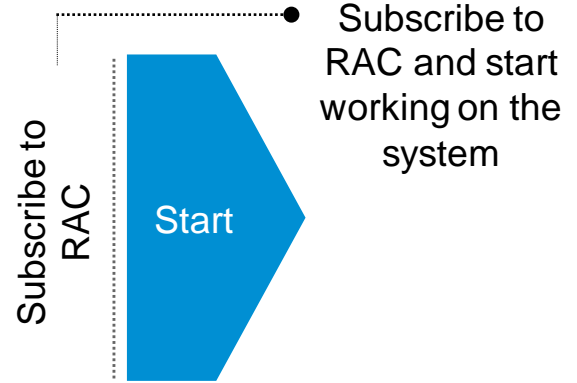
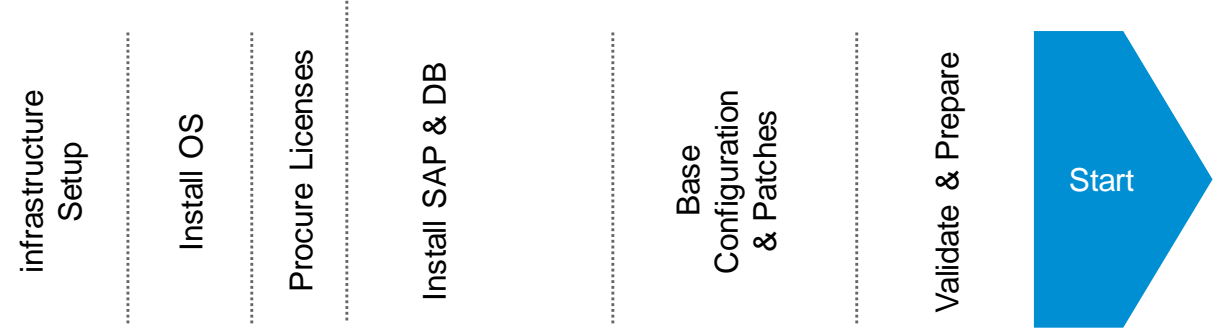
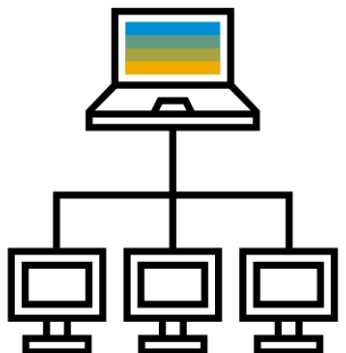
Traditional System Setup

“on-premise”



SAP Remote Access & Connectivity

“RAC”



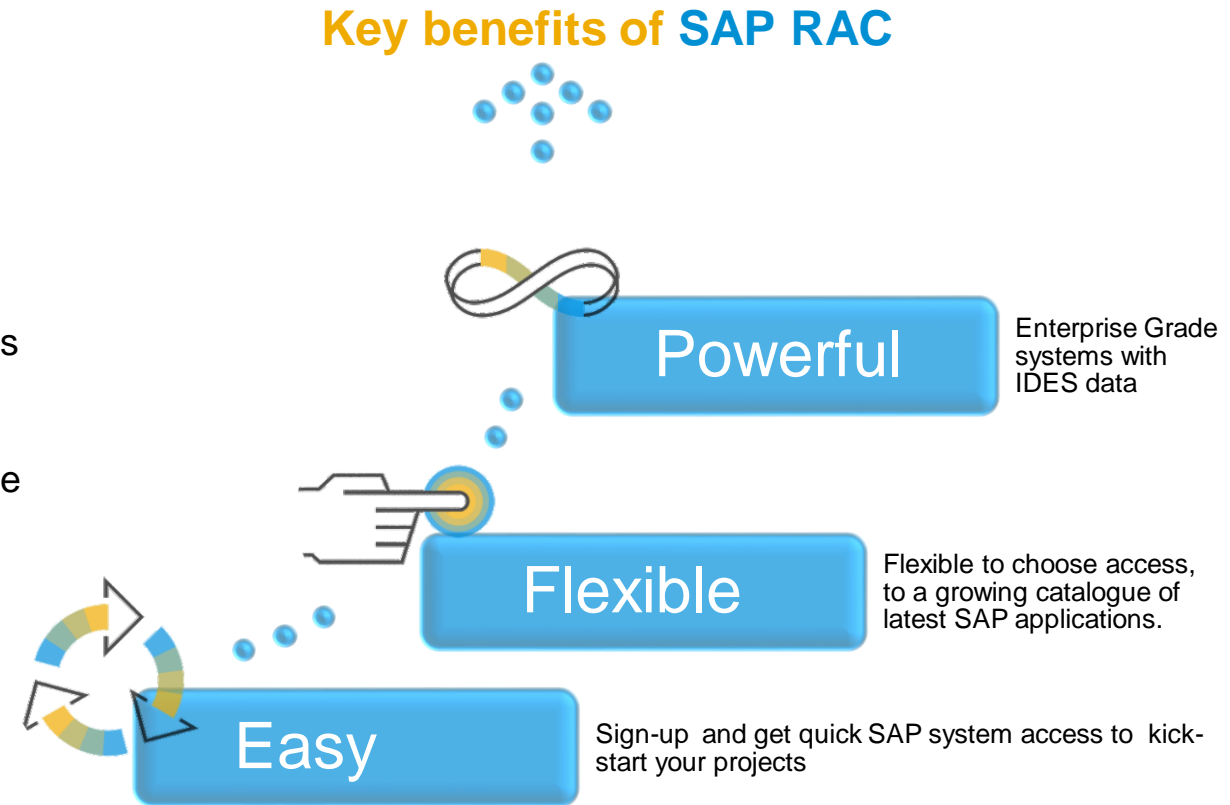
Weeks



Access to system

Key Benefits of SAP RAC

- [SAP RAC](#) offers a professionally hosted and maintained landscape of fully configured [SAP IDES](#) systems addressing the needs of ISVs/partners
- Less maintenance cost for partners as the system set-up and maintenance is done by SAP RAC team
- Simplifies integration testing of your interface to SAP solutions and saves time on your certification project
- Provides easy access and is available via the internet anytime, anywhere and unlimited usage time within service period
- Dedicated e-mail support for connectivity and other system issues
- Systems hosted on both cloud and on-premise servers
- SAP RAC exclusive/premium systems can additionally be used to connect to the partners' SAP Cloud Platform (SCP) account and IDES data can be used for testing purposes



SAP RAC subscriptions and pricing options



SAP RAC Standard



SAP RAC Premium

- **SAP RAC Standard**

- Shared system, multiple partners accessing the system

- **SAP RAC Premium**

- Access to an exclusive-use SAP system for extensive customization, Integration testing, 95% availability

Note: *Subscription fee will increase with new pricing effective June 2020 onwards, watch this space for updates

Service Duration (Months)	3	12	24	36	6	
Service fee	€ 3,500	€ 7,000	€ 9,900	€ 12,000	€ 6600 (Non HANA DB)	€ 9000 (HANA DB)
No. of systems provided	3				1	
No. of users provided	3				20	
System type	Shared				Exclusive	
Development exclusive use	No				Yes	
Access opportunities	SAP GUI,RFC & HTTP(s)				SAP GUI,RFC & HTTP(s)	
Time for provisioning access	1 Day				2 Weeks	

SAP RAC Standard systems catalogue (shared systems)

Note: [SAP RAC](#) offers almost all latest SAP on-premise solutions. Few of the mostly used shared systems are given here. If you don't find what you need please write to [SAP RAC Support](#)

Name	SID	Description
SAP S/4HANA <ul style="list-style-type: none"> • 1909 • 1809 	S4H S1Y	SAP S/4HANA Fully Activated Appliance SAP S/4HANA on premise with IDES data - based on NetWeaver 7.50
SAP S/4HANA Cloud	Q4M	SAP S/4HANA Cloud latest version
SAP ERP IDES <ul style="list-style-type: none"> • 6.08 • 6.06 	C8B E16	ECC 6.0 IDES with Enhancement Pack 8 based on NetWeaver 7.0 with all modules like MM, SD, FI (new GL), CO, QM, PP, PM, HR, WM, ABAP, workflow. Web dynpro, Adobe Lifecycle SAP ERP powered by SAP HANA - ECC 6.0 with Enhancement Pack 6 based on NetWeaver 7.40
SAP Process Integration <ul style="list-style-type: none"> • 7.5 • 7.4 • 7.3 	I31/I3J N7P/N7J N73	SAP XI/PI 7.3,7.4,7.5 including RFC and HTTP/HTTPS access* and new functionality of SAP PI 7.3,7.4,7.5 *Access through other modes like SFTP and FTP are not possible due to security reasons

SAP RAC Standard systems catalogue(shared systems)

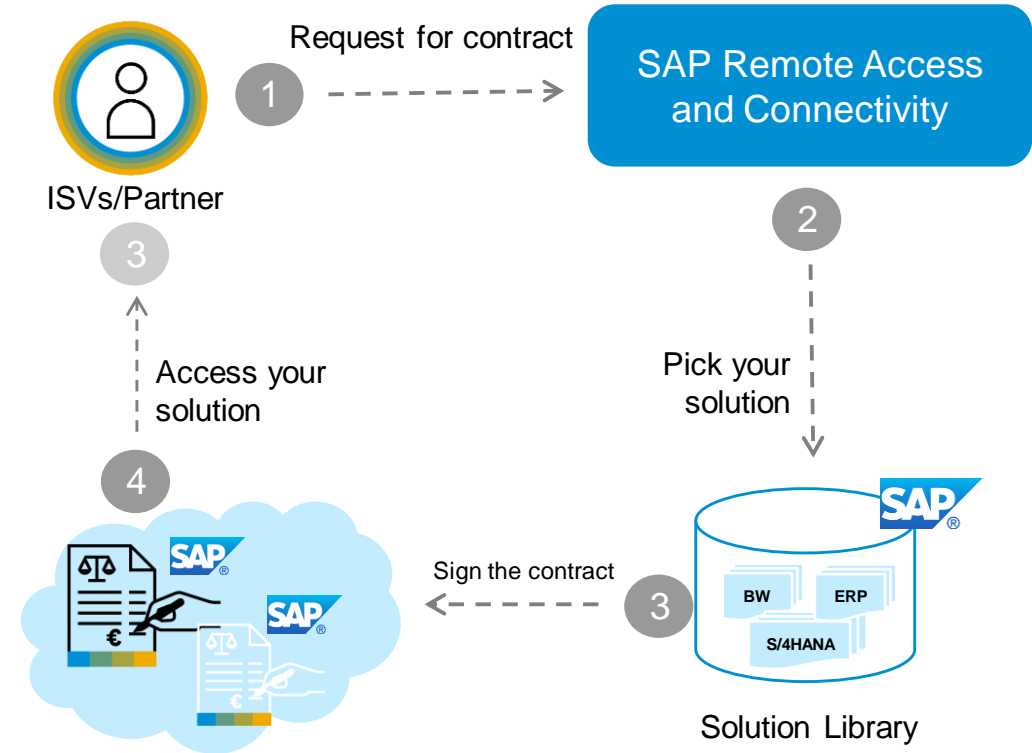
Name	SID	Description
SAP BW/4HANA 1.0	B4J	SAP BW/4 HANA on premise with IDES data - based on NetWeaver 7.50
SAP NetWeaver BI7.5	CB7	BI system is connected to ERP e.g. to design queries using Query Designer, or to execute queries using BEx Analyzer.
SAP CRM 7.0 IDES	C1R	SAP CRM 7.0 with Enhancement Pack 1 comes with new features for SAP CRM
SAP NetWeaver 7.00, 7.01, 7.02, 7.30, 7.40, 7.50 HANA		SAP NetWeaver Application Server - Utilize platform independent Web services, business applications and process like batch scheduling, SMTP-integration, etc.
SAP for Retail 6.05 IDES	RE6	IS Retail 6.05 IDES based on ECC 6.0 is an Industry Solution for Retail
SAP SCM 5.1 IDES	C7M	Test responsive supply networks /integrations seamlessly with both SAP and your software solution
CAL Links		https://cal.sap.com/catalog#/solutions

Sign-up now

1. Request contracts by writing to [SAP RAC Support](#) or by filling [SAP RAC application form](#)
2. Select the required SAP solution.
3. SAP RAC will send you the contracts.
4. Once we receive your signed contract, our SAP RAC support team will contact you immediately to help you with the system access.

Know More About SAP RAC Landscape & Certification

- To learn more about certification please visit [Software Certification](#) page.
- Listing in [Online Directory](#)
- [SAP RAC blog](#)



SAP RAC sign-up process

Thank you.

Follow us



www.sap.com/contactsap

© 2020 SAP SE or an SAP affiliate company. All rights reserved.

No part of this publication may be reproduced or transmitted in any form or for any purpose without the express permission of SAP SE or an SAP affiliate company.

The information contained herein may be changed without prior notice. Some software products marketed by SAP SE and its distributors contain proprietary software components of other software vendors. National product specifications may vary.

These materials are provided by SAP SE or an SAP affiliate company for informational purposes only, without representation or warranty of any kind, and SAP or its affiliated companies shall not be liable for errors or omissions with respect to the materials. The only warranties for SAP or SAP affiliate company products and services are those that are set forth in the express warranty statements accompanying such products and services, if any. Nothing herein should be construed as constituting an additional warranty.

In particular, SAP SE or its affiliated companies have no obligation to pursue any course of business outlined in this document or any related presentation, or to develop or release any functionality mentioned therein. This document, or any related presentation, and SAP SE's or its affiliated companies' strategy and possible future developments, products, and/or platforms, directions, and functionality are all subject to change and may be changed by SAP SE or its affiliated companies at any time for any reason without notice. The information in this document is not a commitment, promise, or legal obligation to deliver any material, code, or functionality. All forward-looking statements are subject to various risks and uncertainties that could cause actual results to differ materially from expectations. Readers are cautioned not to place undue reliance on these forward-looking statements, and they should not be relied upon in making purchasing decisions.

SAP and other SAP products and services mentioned herein as well as their respective logos are trademarks or registered trademarks of SAP SE (or an SAP affiliate company) in Germany and other countries. All other product and service names mentioned are the trademarks of their respective companies.

See www.sap.com/copyright for additional trademark information and notices.