

SAP Data Services

Use the Data Services Workbench Replication Wizard

*To navigate the tutorial, follow the onscreen instructions or
use the controls at the bottom of the screen.*



My Network Places

Recycle Bin

Internet Explorer

Adobe Reader X

Data Services Designer

Data Services Workbench

In this tutorial you will use the replication wizard in the Data Services Workbench to replicate a data warehouse from one database to another.

Note that this tutorial was recorded using SAP Data Services 4.1.

System - Host[:port]: localhost

User name: Administrator

Password: ●●●●●●

Authentication: Enterprise

SAP BusinessObjects


Connect Cancel

Version: 14.1.0.403

Begin by using the Data Services Workbench to log into the Central Management Server (CMS).

SAP BusinessObjects

DATA SERVICES WORKBENCH

 Click connect to log in to the CMS

System - Host[:port]:

User name:

Password:

Authentication:


SAP BusinessObjects

Connect

Cancel

Version: 14.1.0.403

Click Connect.

My



Recycle Bin



Internet Explorer



Adobe Reader X



Data Services Designer



Data Services Workbench

Data Services

Getting Started

[Start a Replication Wizard](#)

Begin the replication process to move data from a source database system to a target database system

[Open a Job](#)

Detailed information about all jobs

Click **Start a Replication Wizard**.

Documentation

[Data Services Workbench Guide](#)

Provides users with information about how to use the Workbench to migrate data and database schema information between different database systems

[Data Services Reference Guide](#)

Detailed reference material for SAP BusinessObjects Data Services

Data Services

Getting Started

Start a Replication

Begin the replication system

Open a Job Monitor

Detailed monitoring

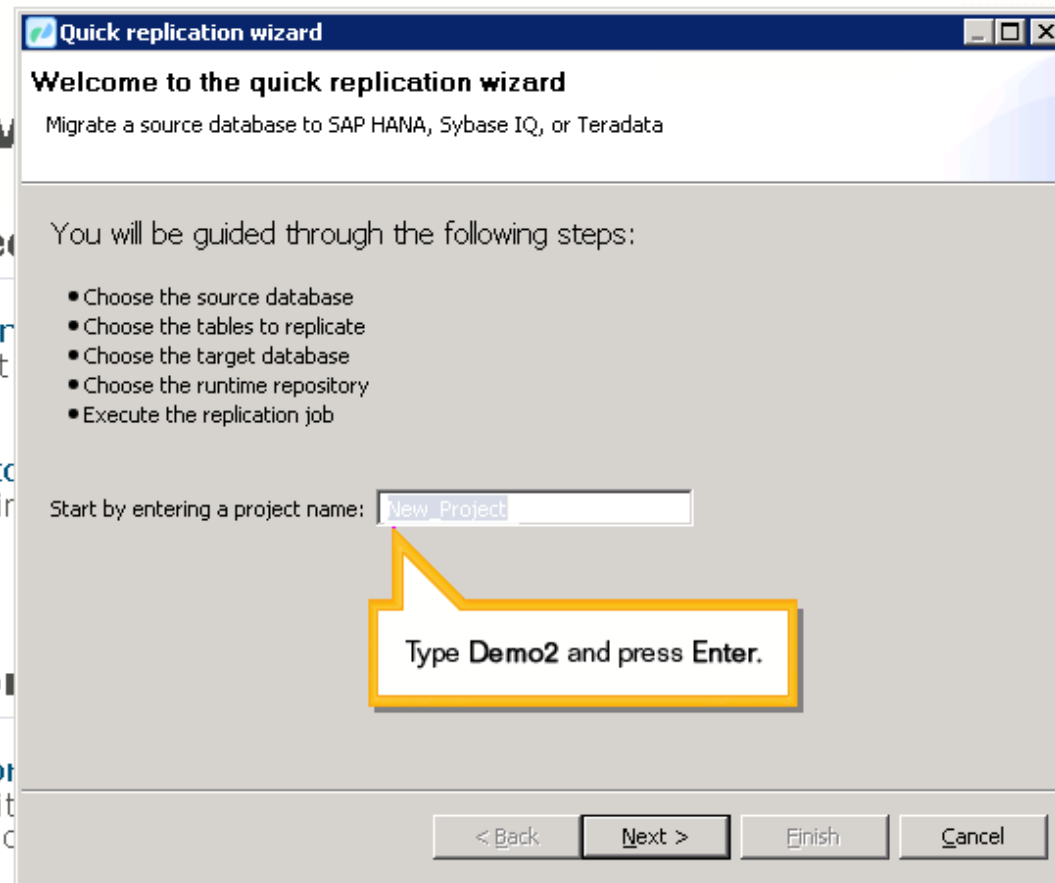
Documentation

Data Services Work

Provides users with schema information

Data Services Reference Guide

Detailed reference material for SAP BusinessObjects Data Services



get database

nd database

Data Services

Getting Started

Start a Replication

Begin the replication system

Open a Job Monitor

Detailed monitoring

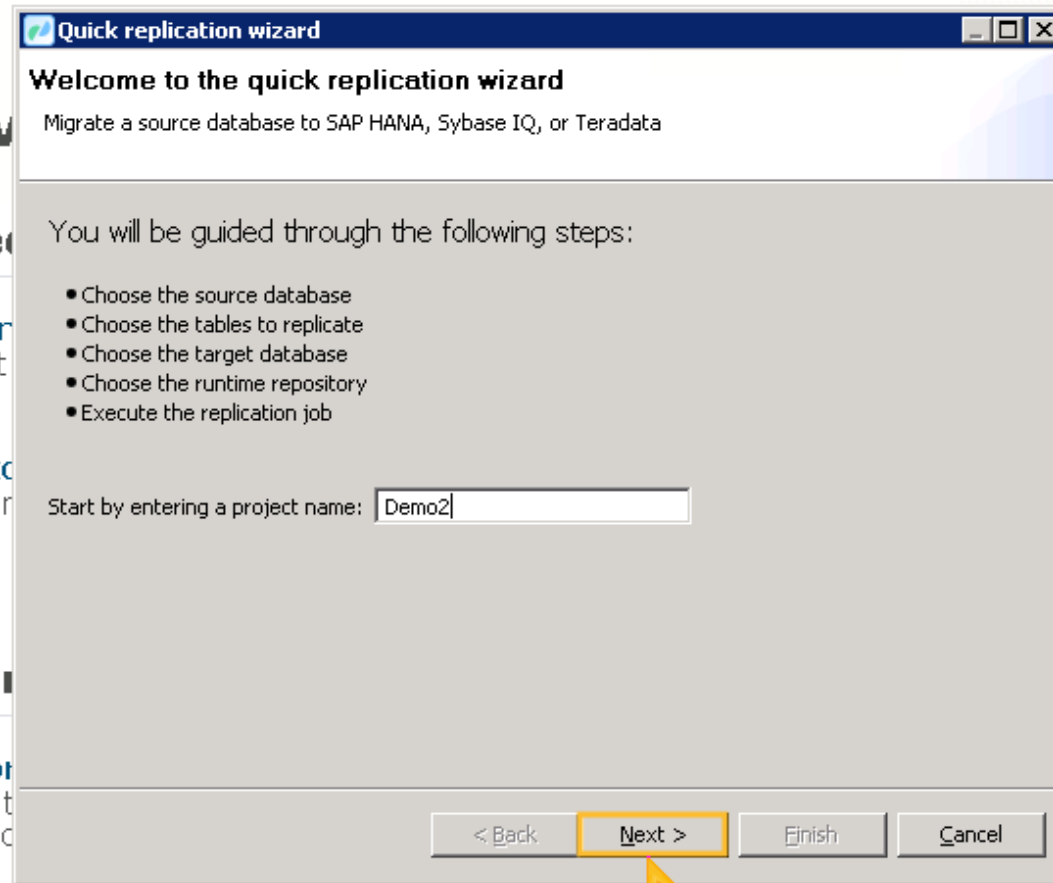
Documentation

Data Services Work

Provides users with schema information

Data Services Reference Guide

Detailed reference material for SAP BusinessObjects Data Services



Quick replication wizard

Welcome to the quick replication wizard

Migrate a source database to SAP HANA, Sybase IQ, or Teradata

You will be guided through the following steps:

- Choose the source database
- Choose the tables to replicate
- Choose the target database
- Choose the runtime repository
- Execute the replication job

Start by entering a project name:

< Back **Next >** Finish Cancel



Click Next.

Next, enter the settings for the source database, which in this example is a Microsoft SQL Server database.

Getting Started

Start a Replication
Begin the replication system

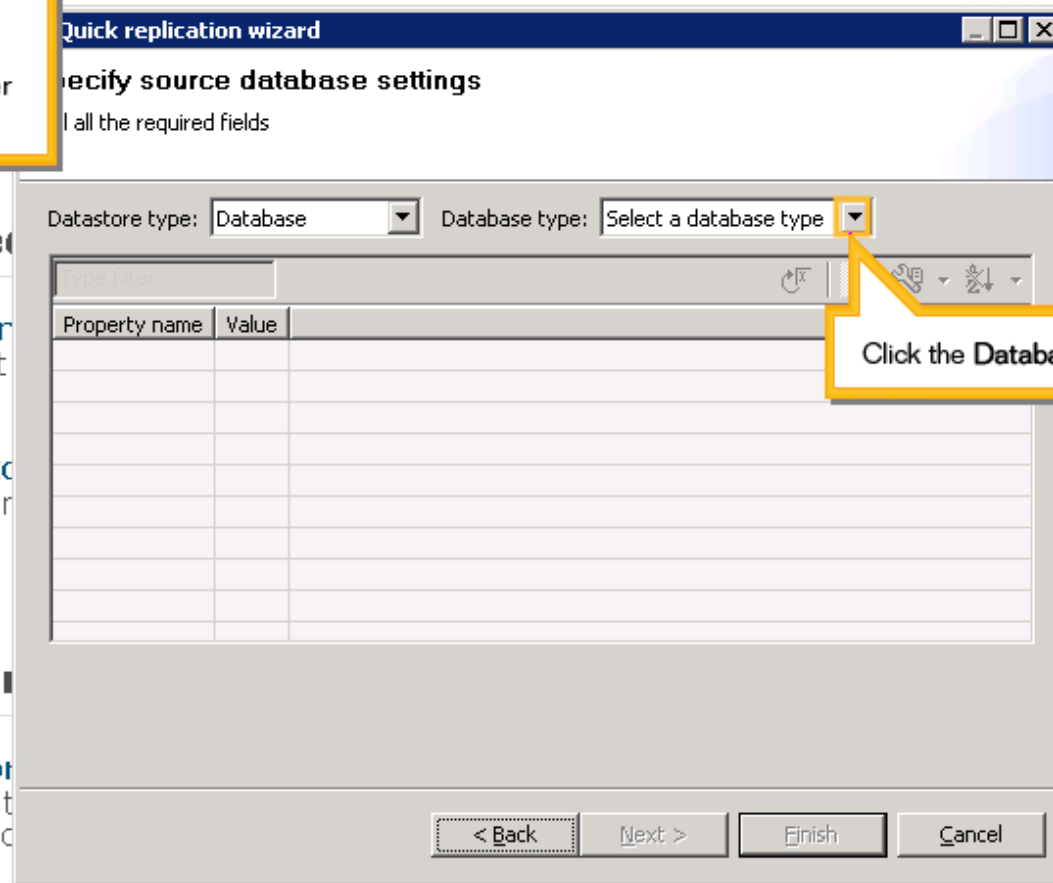
Open a Job Monitor
Detailed monitoring

Documentation

Data Services Work
Provides users with schema information

Data Services Reference Guide

Detailed reference material for SAP BusinessObjects Data Services



Quick replication wizard

Specify source database settings

all the required fields

Datastore type: Database Database type: Select a database type

Property name	Value

< Back Next > Finish Cancel

Click the Database type dropdown arrow.

and database

Data Services

Getting Started

Start a Replication

Begin the replication system

Open a Job Monitor

Detailed monitoring

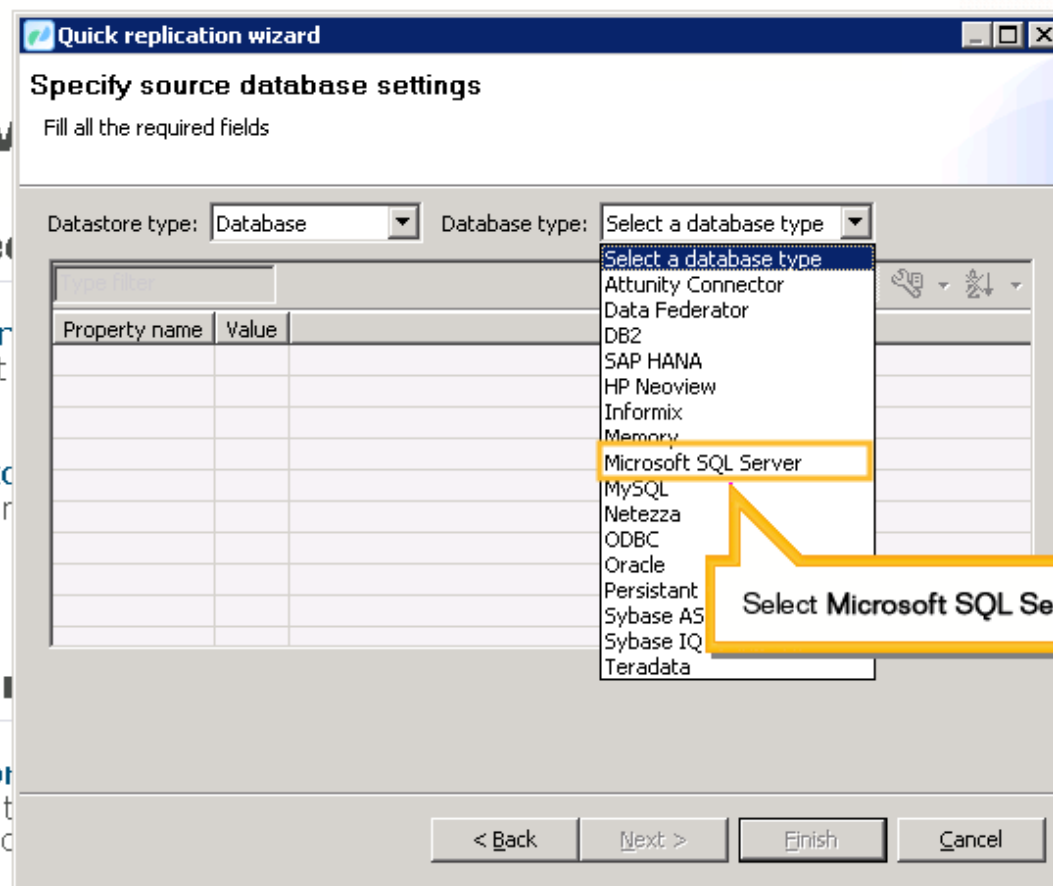
Documentation

Data Services Work

Provides users with schema information

Data Services Reference Guide

Detailed reference material for SAP BusinessObjects Data Services



Quick replication wizard

Specify source database settings
Fill all the required fields

Datastore type: Database Database type: Select a database type

Property name	Value

- Select a database type
- Attunity Connector
- Data Federator
- DB2
- SAP HANA
- HP Neoview
- Informix
- Memory
- Microsoft SQL Server
- MySQL
- Netezza
- ODBC
- Oracle
- Persistent
- Sybase AS
- Sybase IQ
- Teradata

Select Microsoft SQL Server.

< Back Next > Finish Cancel

get database

nd database

Data Services

Getting Started

Start a Replication

Begin the replication system

Open a Job Monitor

Detailed monitoring

Documentation

Data Services Work

Provides users with schema information

Data Services Reference Guide

Detailed reference material for SAP BusinessObjects Data Services

Quick replication wizard

Specify source database settings
Fill the User name field

DatSTORE type: Database Database type: Microsoft SQL Server Test connection...

Property name	Value
Credentials	
SQL server version *	Microsoft SQL Server 2008
Database server name *	localhost
Database name *	
User name *	
Password	
Connection	
Use Windows authentication	
General	
Rows per commit *	

Import unsupported data types as VARCHAR of size: 255

< Back Next > Finish Cancel

Type AdventureWorksDW and press Enter.

get database

nd database

Data Services

Getting Started

Start a Replication

Begin the replication system

Open a Job Monitor

Detailed monitoring

Documentation

Data Services Work

Provides users with schema information

Data Services Reference Guide

Detailed reference material for SAP BusinessObjects Data Services

Quick replication wizard

Specify source database settings
Fill the User name field

Datstore type: Database Database type: Microsoft SQL Server Test connection...

Type filter

Property name	Value
Credentials	
SQL server version *	Microsoft SQL Server 2008
Database server name *	localhost
Database name *	AdventureWorksDW
User name *	
Password	
Connection	
Use Windows authentication	
General	
Rows per commit *	

Import unsupported data types as

Type sa and press Enter.

< Back Next > Finish Cancel

get database

nd database

Data Services

Getting Started

Start a Replication

Begin the replication system

Open a Job Monitor

Detailed monitoring

Documentation

Data Services Work

Provides users with schema information

Data Services Reference Guide

Detailed reference material for SAP BusinessObjects Data Services

Quick replication wizard

Specify source database settings

Click Finish to complete the wizard.

Datstore type: Database Database type: Microsoft SQL Server Test connection...

Type filter

Property name	Value
Credentials	
SQL server version *	Microsoft SQL Server 2008
Database server name *	localhost
Database name *	AdventureWorksDW
User name *	sa
Password	
Connection	
Use Windows authentication *	
General	
Power user commit *	

Import unsupported data types as

Type passwd and press Enter.

< Back Next > Finish Cancel

get database

nd database

Forward

Data Services

Getting Started

Start a Replication
Begin the replication system

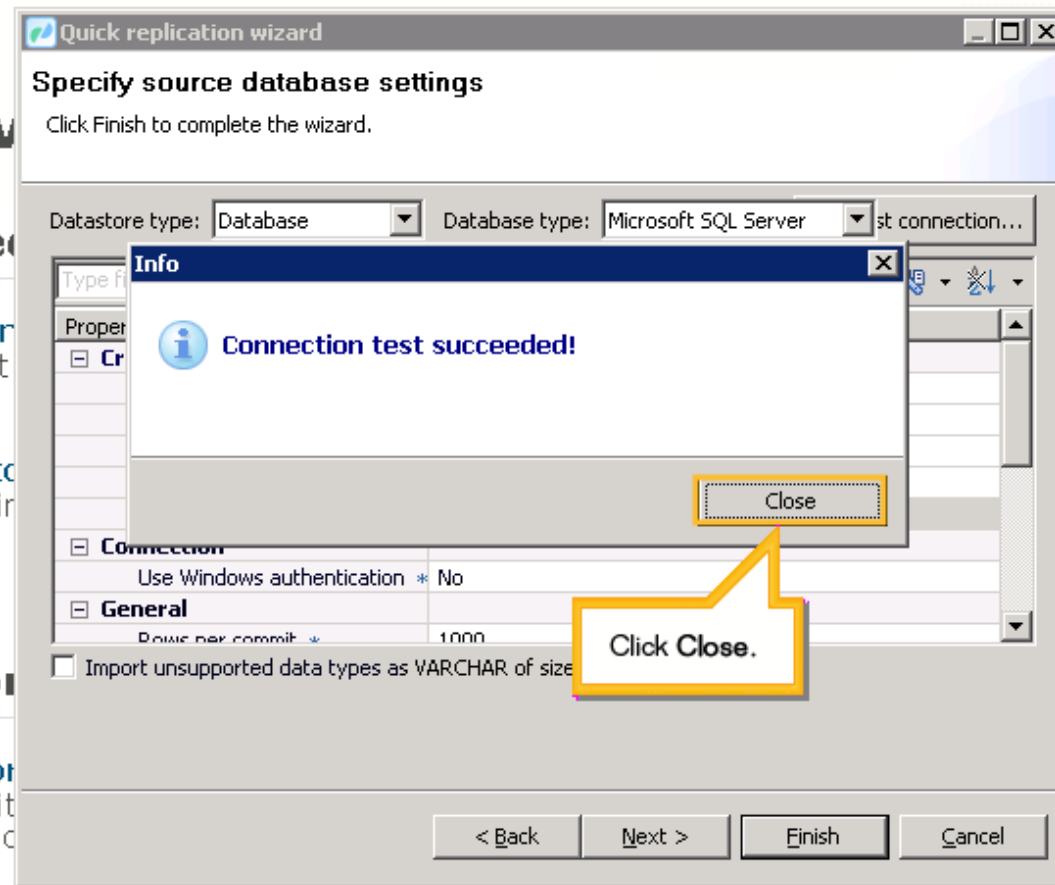
Open a Job Monitor
Detailed monitoring

Documentation

Data Services Work
Provides users with schema information

Data Services Reference Guide

Detailed reference material for SAP BusinessObjects Data Services



get database

nd database

Next, select the tables you want to replicate.

Data Services

Getting Started

Start a Replication

Begin the replication system

Open a Job Monitor

Detailed monitoring

Documentation

Data Services Work

Provides users with schema information

Data Services Reference Guide

Detailed reference material for SAP BusinessObjects Data Services

Quick replication wizard

Specify source database settings

Click Finish to complete the wizard.

Datstore type: Database Database type: Microsoft SQL Server Test connection...

Type filter

Property name	Value
Credentials	
SQL server version *	Microsoft SQL Server 2008
Database server name *	localhost
Database name *	AdventureWorksDW
User name *	sa
Password	*****
Connection	
Use Windows authentication *	No
General	
Rows per commit *	1000

Import unsupported data types as VARCHAR

Click Next.

< Back Next > Finish Cancel

get database

nd database

Data Services

Getting Started

Start a Replication

Begin the replication system

Open a Job Monitor

Detailed monitoring

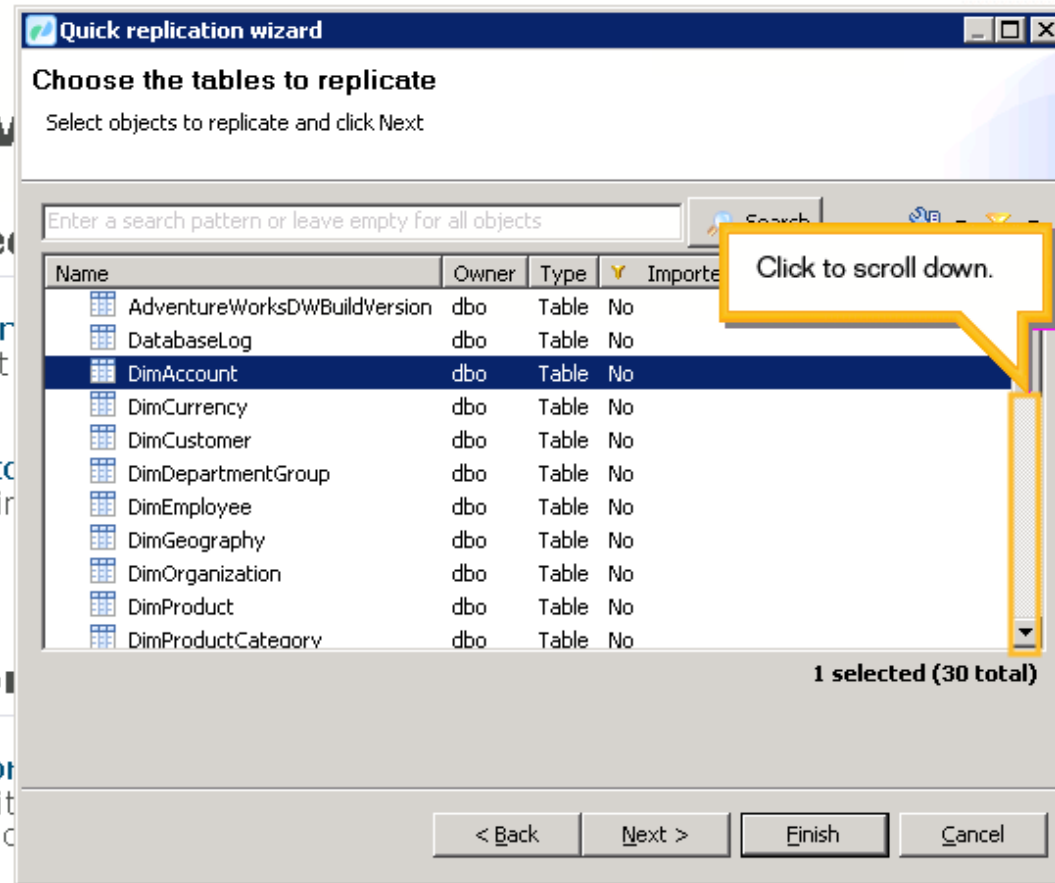
Documentation

Data Services Work

Provides users with schema information

Data Services Reference Guide

Detailed reference material for SAP BusinessObjects Data Services



Quick replication wizard

Choose the tables to replicate
Select objects to replicate and click Next

Enter a search pattern or leave empty for all objects

Name	Owner	Type	Import
AdventureWorksDWBldVersion	dbo	Table	No
DatabaseLog	dbo	Table	No
DimAccount	dbo	Table	No
DimCurrency	dbo	Table	No
DimCustomer	dbo	Table	No
DimDepartmentGroup	dbo	Table	No
DimEmployee	dbo	Table	No
DimGeography	dbo	Table	No
DimOrganization	dbo	Table	No
DimProduct	dbo	Table	No
DimProductCategory	dbo	Table	No

1 selected (30 total)

< Back Next > Finish Cancel

target database

source database

For this tutorial, all of the tables that begin with Dim (dimension) or Fact have been selected for you (22 out of 30 total).

Quick replication wizard

Choose the tables to replicate

Select objects to replicate and click Next

Enter a search pattern or leave empty for all objects

Search

Name	Owner	Type	Imported	Description
FactInternetSales	dbo	Table	No	
FactInternetSalesReason	dbo	Table	No	
FactResellerSales	dbo	Table	No	
FactSalesQuota	dbo	Table	No	
ProspectiveBuyer	dbo	Table	No	
vAssocSeqLineItems	dbo	View	No	
vAssocSeqOrders	dbo	View	No	
vDMPrep	dbo	View	No	
vTargetMail	dbo	View	No	
vTimeSeries	dbo	View	No	

22 selected (30 total)

< Back

Next >

Finish

Cancel

Click Next.

Getting Started

Start a Replication

Begin the replication system

Open a Job Monitor

Detailed monitoring

Documentation

Data Services Work

Provides users with schema information

Data Services Reference Guide

Detailed reference material for SAP BusinessObjects Data

get database

nd database

Data Services

Getting Started

Start a Replication

Begin the replication system

Open a Job Monitor

Detailed monitoring

Documentation

Data Services Work

Provides users with schema information

Data Services Reference Guide

Detailed reference material for SAP BusinessObjects Data Services

Quick replication wizard

Choose target database settings :
Fill the ODBC data source name field

Datstore type: Database Database type: SAP HANA Test connection...

Type filter

Property name	Value
Credentials	
HANA version *	HANA 1.x
ODBC data source name *	HANA
User name *	
Password	
Connection	
Additional connection information	
General	
Rows per commit *	
Overflow file directory	

Import unsupported data types as VARCHAR of size: 255

< Back Next > Finish Cancel

Type DATASERVICES and press Enter.

get database

nd database

Data Services

Getting Started

Start a Replication

Begin the replication system

Open a Job Monitor

Detailed monitoring

Documentation

Data Services Work

Provides users with schema information

Data Services Reference Guide

Detailed reference material for SAP BusinessObjects Data Services

Quick replication wizard

Choose target database settings :
Fill the ODBC data source name field

Datastore type: Database Database type: SAP HANA Test connection...

Type filter

Property name	Value
Credentials	
HANA version *	HANA 1.x
ODBC data source name *	HANA
User name *	DATASERVICES
Password	
Connection	
Additional connection information	
General	
Rows per commit *	
Overflow file directory	
<input type="checkbox"/> Import unsupported data types as VAP	

Type 123456ds and press Enter.

< Back Next > Finish Cancel

get database

nd database

Data Services

Getting Started

Start a Replication

Begin the replication system

Open a Job Monitor

Detailed monitoring

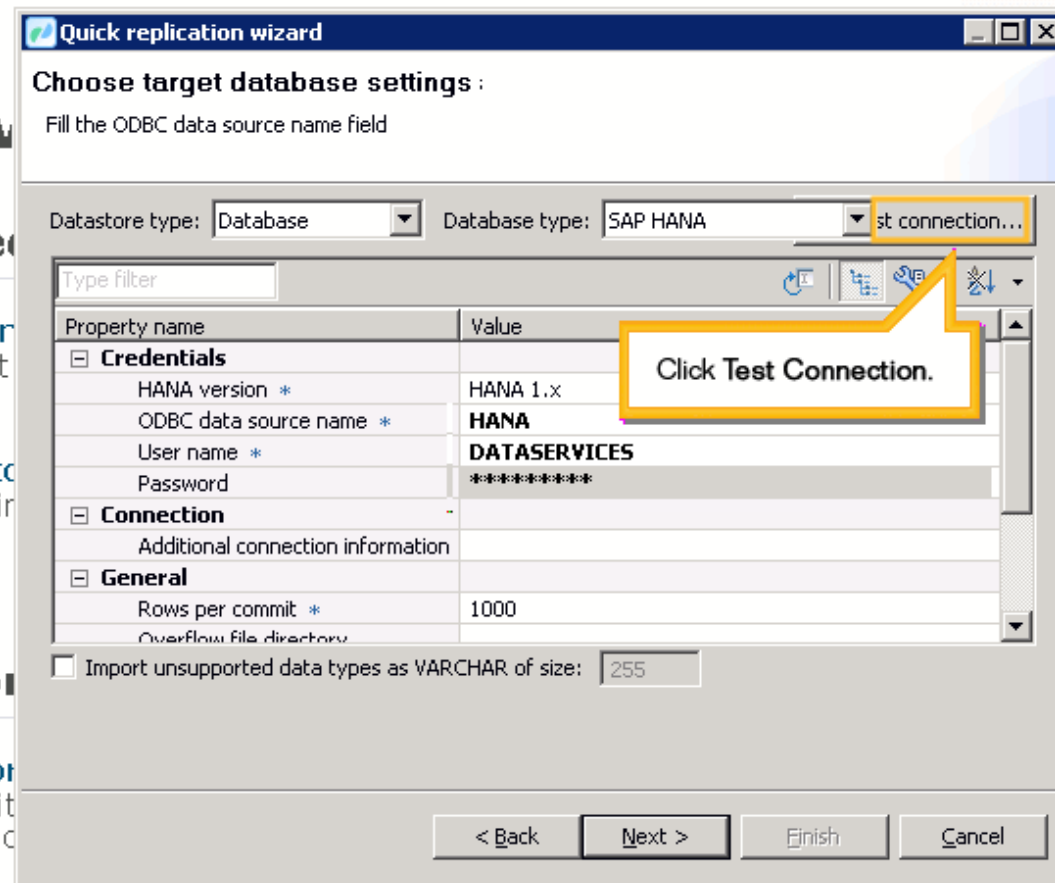
Documentation

Data Services Work

Provides users with schema information

Data Services Reference Guide

Detailed reference material for SAP BusinessObjects Data Services



Quick replication wizard

Choose target database settings :
Fill the ODBC data source name field

Datastore type: Database Database type: SAP HANA Test connection...

Property name	Value
Credentials	
HANA version *	HANA 1.x
ODBC data source name *	HANA
User name *	DATASERVICES
Password	*****
Connection	
Additional connection information	
General	
Rows per commit *	1000
Overflow file directory	

Import unsupported data types as VARCHAR of size: 255

< Back Next > Finish Cancel

get database

nd database

Forward

Data Services

Getting Started

Start a Replication

Begin the replication system

Open a Job Monitor

Detailed monitoring

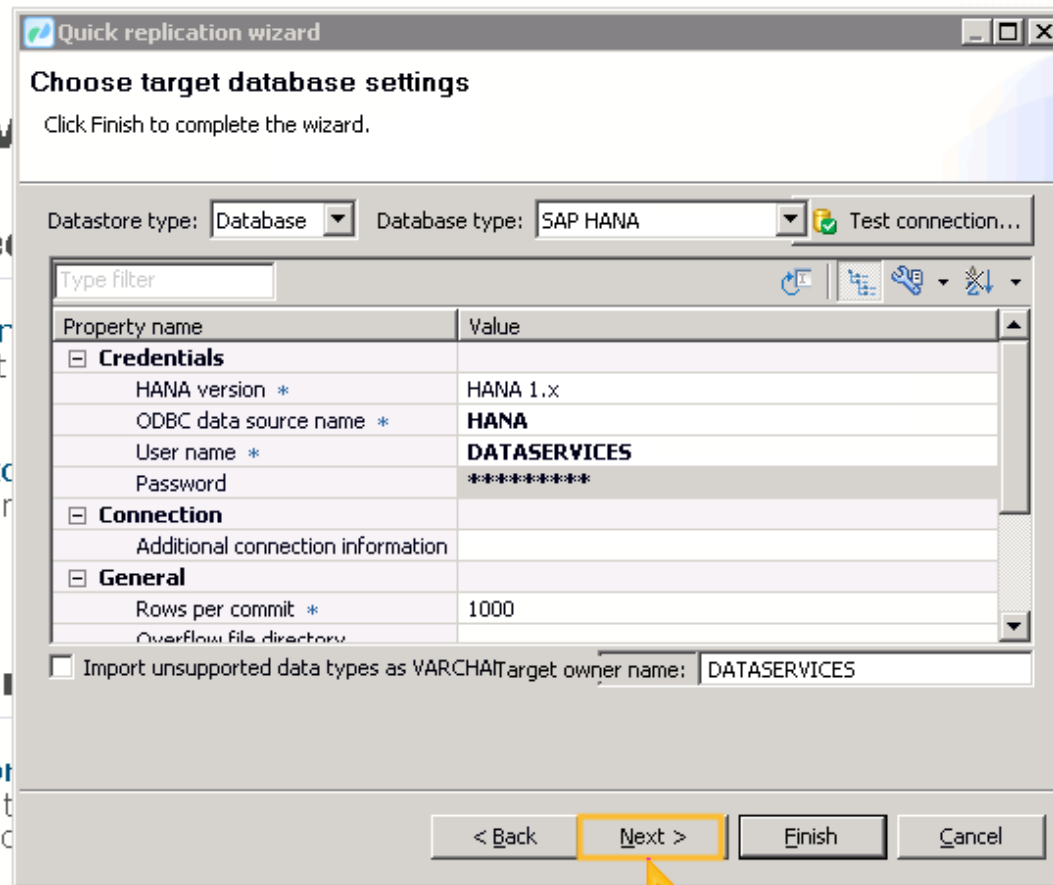
Documentation

Data Services Work

Provides users with schema information

Data Services Reference Guide

Detailed reference material for SAP BusinessObjects Data Services



Quick replication wizard

Choose target database settings

Click Finish to complete the wizard.

Datastore type: Database Database type: SAP HANA Test connection...

Property name	Value
Credentials	
HANA version *	HANA 1.x
ODBC data source name *	HANA
User name *	DATASERVICES
Password	*****
Connection	
Additional connection information	
General	
Rows per commit *	1000
Overflow file directory	

Import unsupported data types as VARCHAR target owner name: DATASERVICES

< Back Next > Finish Cancel

target database

and database

Click Next.

Choose a Data Services repository and Job Server. In this example, you can accept the default selections.

Quick replication wizard

The replication job is ready to be executed

Choose a Data Services repository and Job Server and click Finish

Execute replication job now

Select a repository:

Name	Read-only	Desc
Local_Repo	No	Insta
DS_REPO_RapidMarts	No	

Select a Job Server or server group:

Name	Type
JobServer @ VEEIM41MST:3500	Job Server

< Back

Next >

Finish

Cancel

Click Finish.

Getting Started

Start a Replication

Begin the replication system

Open a Job Monitor

Detailed monitoring

Documentation

Data Services Work

Provides users with schema information

Data Services Reference Guide

Detailed reference material for SAP BusinessObjects Data Services

get database

nd database

Data Services Workbench [connected to localhost]

File Edit View Help

replication wizard...

ERP.datastore Local_Repo.Demo2 (Success)

Monitoring job execution

Success Stop Refresh

Progress

16,101 rows/sec
13,576 rows/sec
9,050 rows/sec
4,525 rows/sec
0 rows/sec

21:30 21:31

Current reading speed: 0 rows/sec - Current loading speed: 0 rows/sec - Total rows read: 261,810 rows - Total rows loaded: 261,810 rows -

Problems References Analysis

0 items

Description	Resource	Path	Location	Type

The tables you selected have been replicated in HANA.

Data Services Workbench [connected to localhost]

File Edit Tools Window Help

Quick replication wizard...

Project Explorer

- demo
- Demo1
- Demo2

ERP.datastore Local_Repo.Demo2 (Success)

Monitoring job execution

Success Stop Refresh

Progress

Time	Reading Speed (rows/sec)	Loading Speed (rows/sec)
21:30:00	0	0
21:30:05	0	0
21:30:10	0	0
21:30:15	0	0
21:30:20	0	0
21:30:25	0	0
21:30:30	0	0
21:30:35	0	0
21:30:40	0	0
21:30:45	0	0
21:30:50	0	0
21:30:55	0	0
21:31:00	0	0

Current reading speed: 0 rows/sec - Current loading speed: 0 rows/sec - Total rows read: 261,810 rows - Total rows loaded: 261,810 rows -

You have successfully used the replication wizard in the Data Services Workbench to replicate a data warehouse from one database to another.

End of tutorial