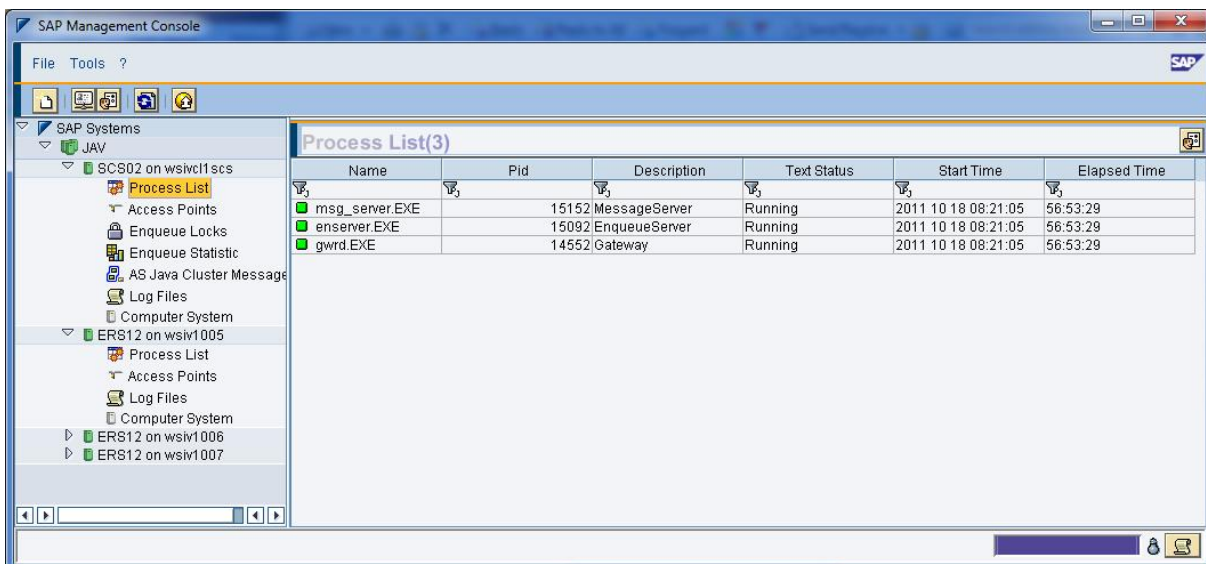


# Start/Stop of a Clustered SCS-Instance in a Microsoft Cluster Environment

This document describes how cluster integration using the SAPHA interface behaves from an end user / administrator perspective.

## INITIAL STATE (EVERYTHING STARTED)

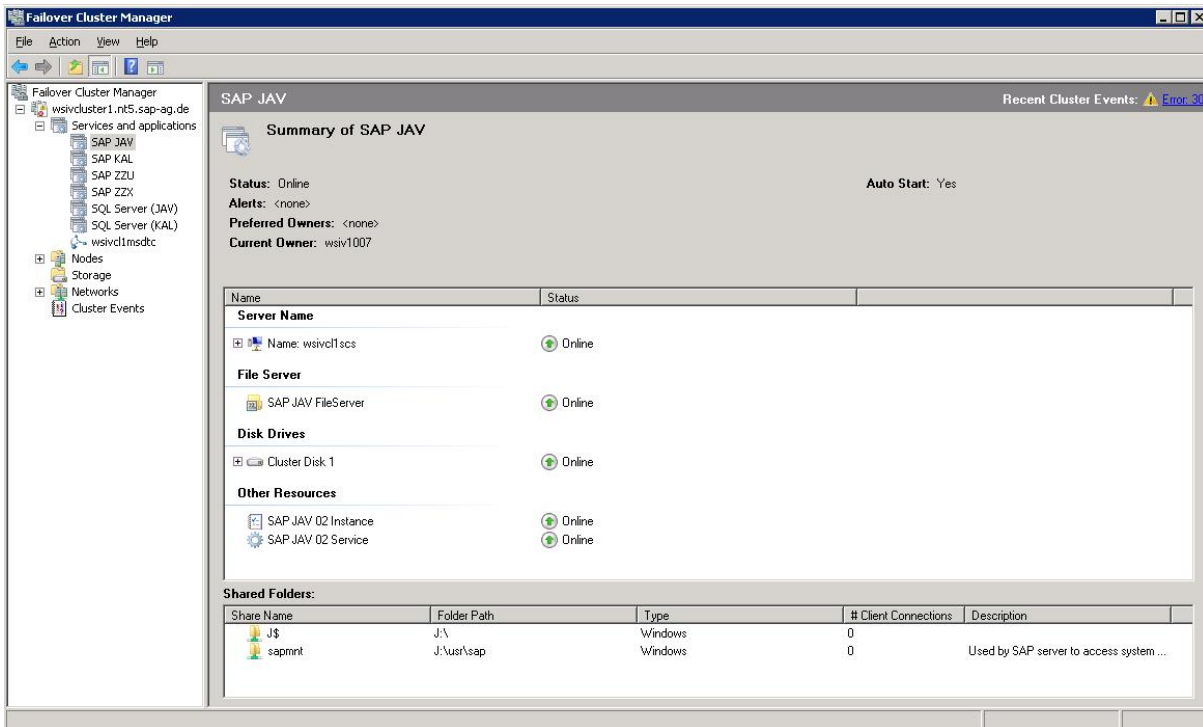
A clustered SCS instance (enqueue, message server, gateway) with 3 ERS instances (enqueue replication server), everything running.



The screenshot displays the SAP Management Console interface. The left-hand pane shows a tree view of SAP Systems, including 'JAV' and 'SCS02 on wsivc11.scs'. The right-hand pane shows the 'Process List(3)' for the selected system. The table below represents the data shown in the screenshot:

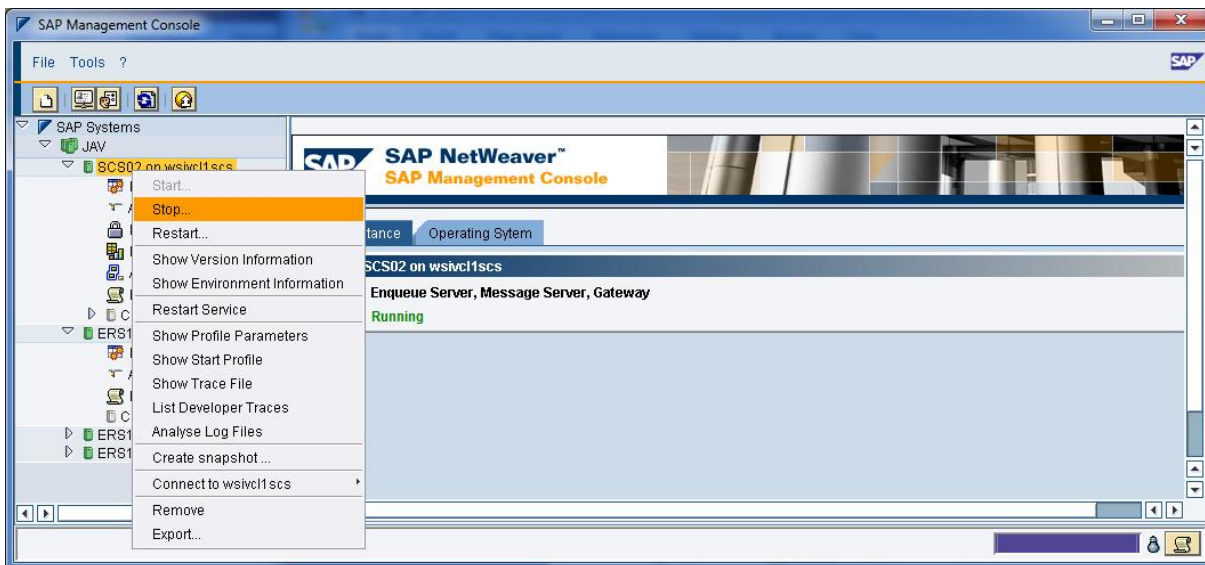
Name	Pid	Description	Text Status	Start Time	Elapsed Time
msg_server.EXE	15152	MessageServer	Running	2011 10 18 08:21:05	56:53:29
enserver.EXE	15092	EnqueueServer	Running	2011 10 18 08:21:05	56:53:29
gwrdr.EXE	14552	Gateway	Running	2011 10 18 08:21:05	56:53:29

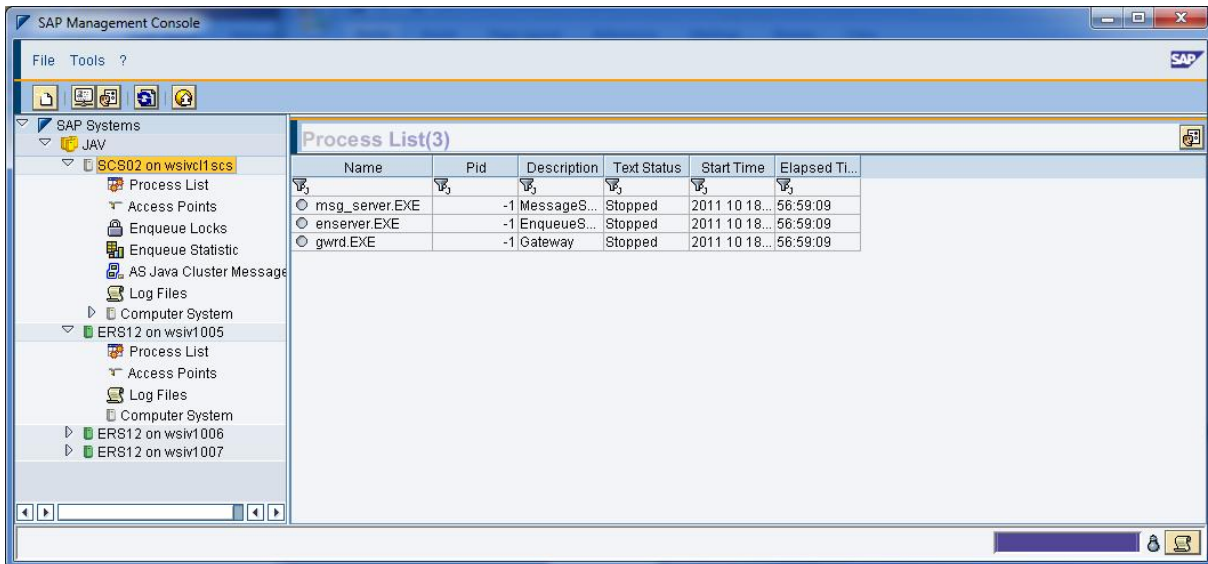
All corresponding cluster resources are online:



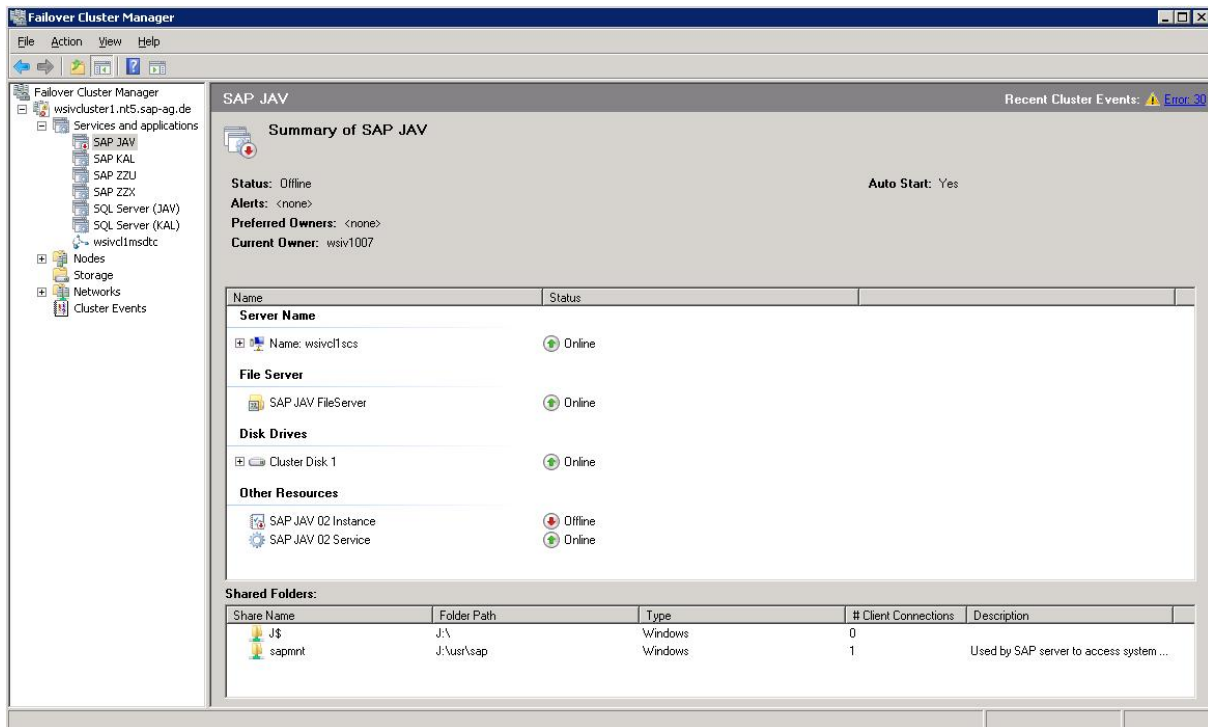
## INSTANCE STOP

Administrator triggers stop of the SCS instance. Instance stops (sapstartsv of the instance remains running):



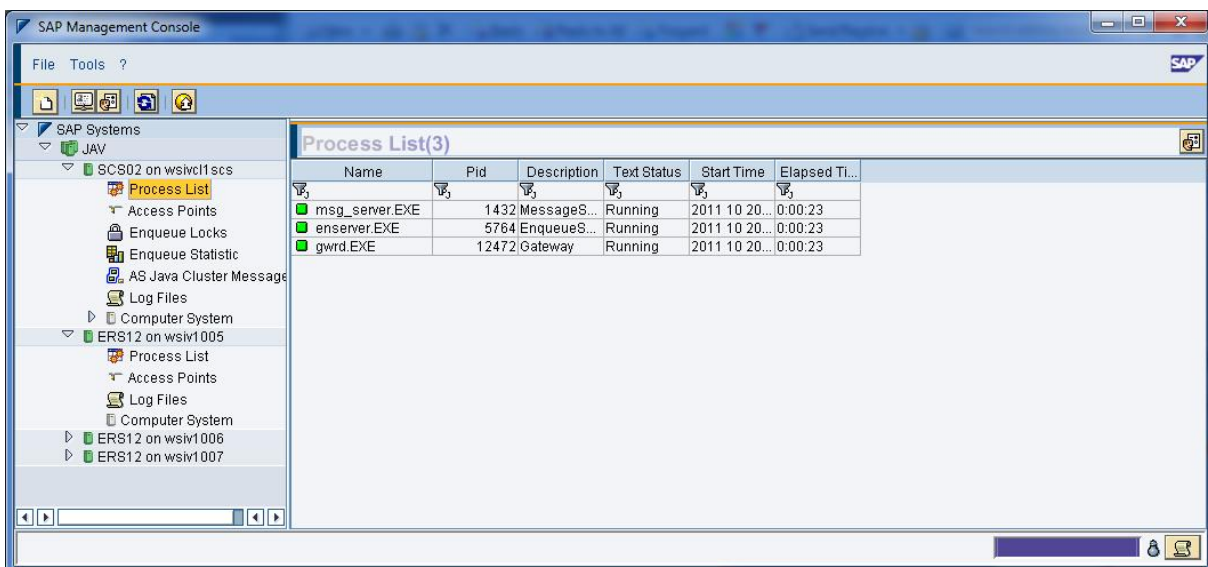
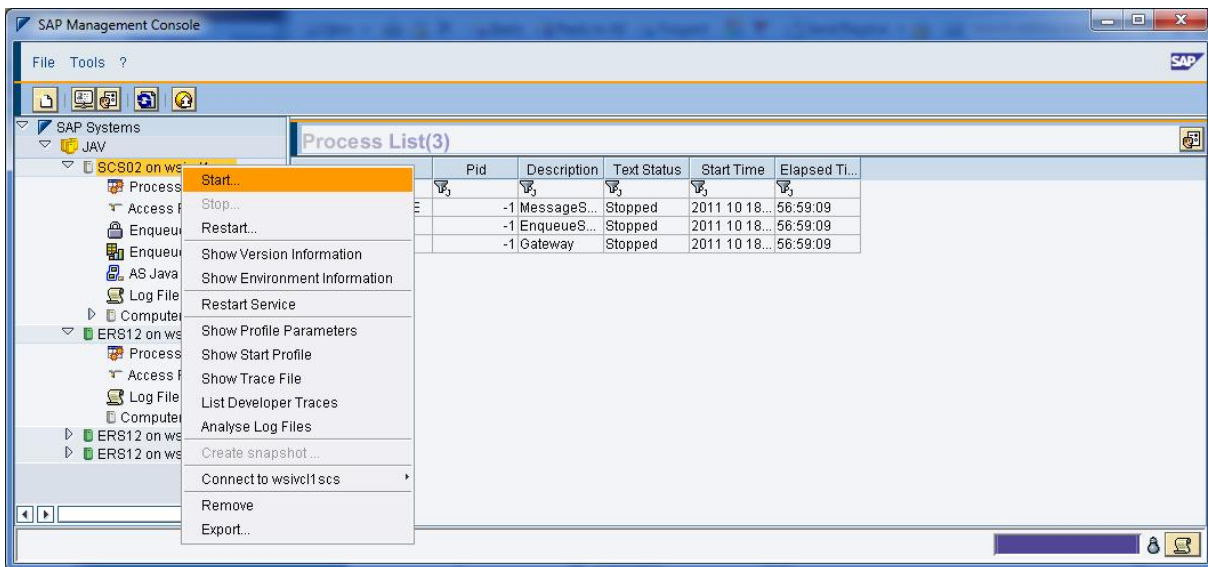


Only SAP instance resource goes offline, all other resources (IP address, filesystem, sapstartsv Service) remain online. Cluster triggers no failover:



## INSTANCE START

Administrator triggers start of the SCS instance:



All corresponding cluster resources are online again:

Failover Cluster Manager

File Action View Help

Failover Cluster Manager  
 wsvclcluster1.nt5.sap-ag.de  
 Services and applications  
 SAP JAV  
 SAP KAL  
 SAP ZZU  
 SAP ZZX  
 SQL Server (JAV)  
 SQL Server (KAL)  
 wsvclmsdtc  
 Nodes  
 Storage  
 Networks  
 Cluster Events

SAP JAV Recent Cluster Events: Error: 30

**Summary of SAP JAV**

**Status:** Online **Auto Start:** Yes  
**Alerts:** <none>  
**Preferred Owners:** <none>  
**Current Owner:** wsv1007

Name	Status
<b>Server Name</b>	
Name: wsvcl1scs	Online
<b>File Server</b>	
SAP JAV FileServer	Online
<b>Disk Drives</b>	
Cluster Disk 1	Online
<b>Other Resources</b>	
SAP JAV 02 Instance	Online
SAP JAV 02 Service	Online

**Shared Folders:**

Share Name	Folder Path	Type	# Client Connections	Description
J\$	J:\	Windows	0	
sapmnt	J:\usr\sap	Windows	2	Used by SAP server to access system ...