



Activating BI Content for Analysis of Change Requests within SAP Master Data Governance

Applicable Releases:
EhP6, MDG 6.0

Version 1
October 2013

Document History

Document Version	Description
1.00	First official release of this guide

TABLE OF CONTENTS

1.	BUSINESS SCENARIO.....	4
2.	BACKGROUND INFORMATION	5
3.	PREREQUISITES	5
4.	ACTIVATING MDG BI CONTENT IN CUSTOMIZING	6
4.1	ODP BASIC CUSTOMIZING.....	6
4.2	BI CONTENT ACTIVATION WORKBENCH	8
4.3	CONFIGURE PROCESSING TIME (GRAPHICAL VIEW)	9
5.	SAP NOTES OF INTEREST.....	10

1. BUSINESS SCENARIO

SAP Master Data Governance provides business processes to find, create, and change master data, and to mark master data for deletion. It supports the governance of master data on a central hub and the replication of master data to connected operational systems and business intelligence systems.

The processes are workflow-driven and can include several approval and revision phases, including collaboration between all users participating in master data maintenance.

With MDG 6.0 EHP6, SAP supports BI Content; reports and functions that analyze how effectively change requests are processed in your organization. You must activate the content first, as described in this document.

You can analyze change requests from the following perspectives:

- Processing times (for example, view a graphic indicating what proportion of change requests violate Service Level Agreements)
- Statuses (for example, view a graphic indicating what proportion of change requests are in process)
- Change requests involving you

2. BACKGROUND INFORMATION

Documentation for Enabling Detailed Analysis of Change Requests in EhP6

MDG 6.0 comes with a small set of BI queries that support the visual analysis and overall monitoring of the change requests. The queries are included in Web Dynpro Applications (List View). Also included is a dashboard, which is based upon Xcelsius.

To ensure you can perform detailed analysis of change requests, you must have a BI Java Server and a browser with a flash plug-in.

MDG Analytics is based on operational analytics in ERP Central Component (ECC). The Info provider is an Operation Data Provider (ODP) which is located in the ECC system and not in the Business Warehouse (BW).

Note

Xcelsius is required to change source code but not to execute the dashboard. For more information, see [Xcelsius 2008 Service Pack 4](#).

After you specify a priority and a time frame, you can find out whether change requests across the organization are meeting or violating target processing times. This information is available for the whole organization, for data models within the organization, and for change request types within each data model. You can access statistical information in the list view and graphical illustrations in the graphical view. In the Processing Time (List View), you can navigate to individual change requests that are causing problems.

3. PREREQUISITES

You have implemented the following:

- An SAP NetWeaver system set up as described in SAP Note [1450981 - XC: Sharing NW BI Java Sys. between several NW ABAP Systems](#)
- ECC 6 APPL 606
- Portal
- SAP GUI 720 or higher including Business Explorer (BW-BEX) with a patch level higher than 4
- To be able change the delivered dashboards, you require the following:
 - You have installed SAP BusinessObjects Xcelsius 2008 (SP3) or higher.
 - You have installed a BI Java Server.
 - You have installed Xcelsius Designer.

For more information, see [Xcelsius Dashboard Integration](#).

If activation of the dashboard from BI Content in Administrator Workbench fails, see SAP Note [1789776](#).

Note: You do not require new licenses to change or create new queries.

- A SAP BusinessObjects Enterprise (BOE) server is not needed but you need to license the appropriate SAP Business Objects software as described in SAP note [1486885 - Prerequisites for preconfigured embedded analytics content](#).
- If you need to implement SAP BusinessObjects BW Accelerator for performance reasons you must obtain a license.

4. ACTIVATING MDG BI CONTENT IN CUSTOMIZING

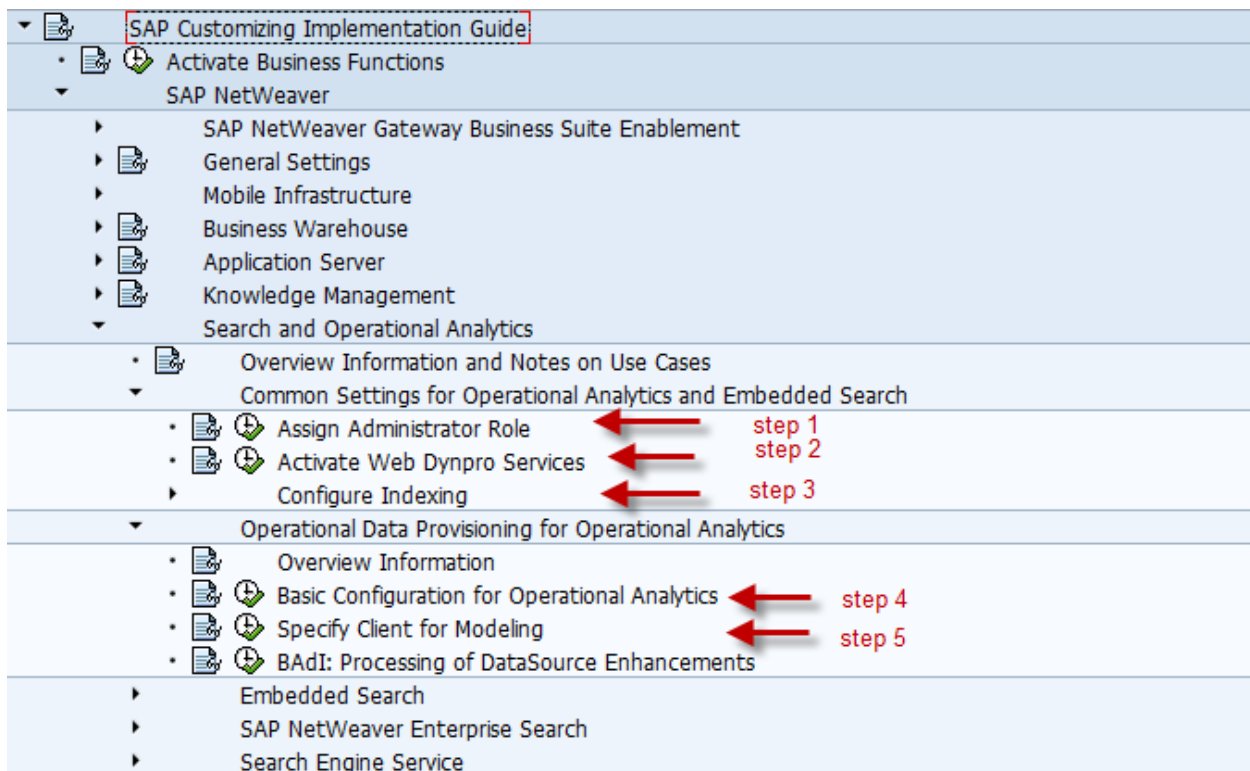
Activating MDG BI Content involves the following steps:

1. Enabling the ODP in Customizing
2. Activating Search and Operation Analytics in Customizing
3. Unpacking the Package for MDG BI Content
4. Enabling the Configuration of Processing Time (Graphical View)
5. Enabling Xcelsius Enterprise Integration

4.1 ODP Basic Customizing

For information about the concept Operational Data Provisioning, see [Operational Data Provisioning](#).

Each of the customizing activities shown below must be performed in sequence. It is possible to access the relevant views directly using transaction codes, but we recommend using Customizing instead.



For more information, see the following help document: [Search and Operation Analytics](#).

1 Assign Administrator Role

In Customizing for SAP NetWeaver under *Search and Operational Analytics -> Common Settings for Operational Analytics and Embedded Search -> Common Settings for Operational Analytics and Embedded Search*, open the *Assign Administrator Role* activity. (You can also access the relevant view using transaction SU01.

Assign the user the following role `SAP_ESH_LOCAL_ADMIN`. This role contains the authorizations required to configure and manage the embedded search and operational data provisioning

2 Activate Web Dynpro Services

In Customizing for SAP NetWeaver under *Search and Operational Analytics -> Common Settings for Operational Analytics and Embedded Search -> Common Settings for Operational Analytics and Embedded*

Search, open the *Activate Web Dynpro Services* activity. (You can also access the relevant view using transaction `SICF`).

Activate the following Web Dynpro Services:

```
default_host > sap > bc > bsp > sap > esh_sap_link
default_host > sap > bc > webdynpro > sap > ESH_ADMIN_UI_COMPONENT
default_host > sap > bc > webdynpro > sap > esh_eng_modelling
default_host > sap > bc > webdynpro > sap > esh_eng_wizard
default_host > sap > bc > webdynpro > sap > esh_search_results_ui
default_host > sap > bc > webdynpro > sap > wdhc_help_center
default_host > sap > es > cockpit
default_host > sap > es > saplink
default_host > sap > es > search
```

3 Specify the RFC Destination

In Customizing for SAP NetWeaver under *Search and Operational Analytics -> Common Settings for Operational Analytics and Embedded Search -> Common Settings for Operational Analytics and Embedded Search -> Configure Indexing*, open the *Specify RFC Destination* activity. (You can also access the relevant view using transaction `ESH_ADM_TREX_DEST`).

As a prerequisite for activating Operational Data Providers, set the *RFC Destination of TREX* to `NO TREX`. This setting is necessary even if you are not using an SAP NetWeaver Business Warehouse Accelerator.

4 Basic Configuration for Operational Analytics

In Customizing for SAP NetWeaver under *Search and Operational Analytics -> Common Settings for Operational Analytics and Embedded Search -> Operational Data Provisioning for Operational Analytics*, open the *Basic Configuration for Operational Analytics* activity. (You can also access the relevant view using transaction `RSRTS_ACTIVATE_R3IS`).

Assign a *Logical System* to the client. At the start of the report, enter the BW client on which you want to perform the basic configuration. This allows you to use operational data provisioning and Classic InfoSets in BI tools. Select the BW client and execute.

As a general rule, you are not permitted to make system changes in productive systems. However, the configuration of operational analytics requires that you permit system changes on the relevant clients. Verify that the following permissions exist:

1. System changes are possible in the relevant clients of the relevant productive systems.
 - a. In Customizing, go to Logistics -> *General -> Product Data Replication -> Application Link Enabling (ALE)*. Open the *Assign Logical System to Client* customizing activity.
 - b. Select the relevant client and choose *Goto -> Details*.
 - c. In the *Cross-Client Object Changes* field, choose `No Changes to Cross-Client Customizing Objects`. This setting allows you to maintain cross-client objects from the SAP repository.
2. System changes are possible in the BW namespaces.

In transaction `SE03` under *Objects Namespace Information System*, flag the namespaces `/BIC/` and `/BI0/` as changeable.

5 Determine the Modeling Client

Each analytic query is defined on a cross-client basis. Therefore the ODP modeling for the underlying `TransientProvider` must only be read from one single client.

In transaction `RODPS_ODP_IMG`, specify the client in which the Operational Data Provider metadata is modeled and the RFC destination for the client.

4.2 BI Content Activation Workbench

We recommend you activate BI content in the local BI client.

Refer to the following documentation:

- [Documentation for activating BI Content](#)
- SAP Note: [1646399 - BI Content Activation Workbench: Additional Information](#)

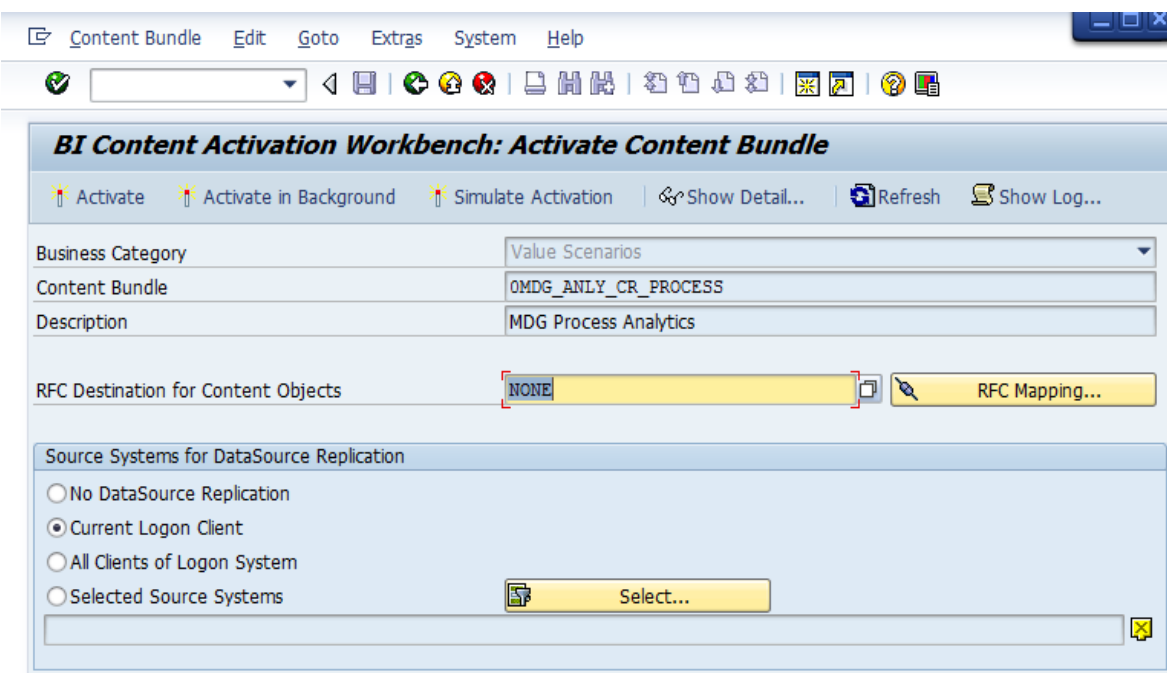
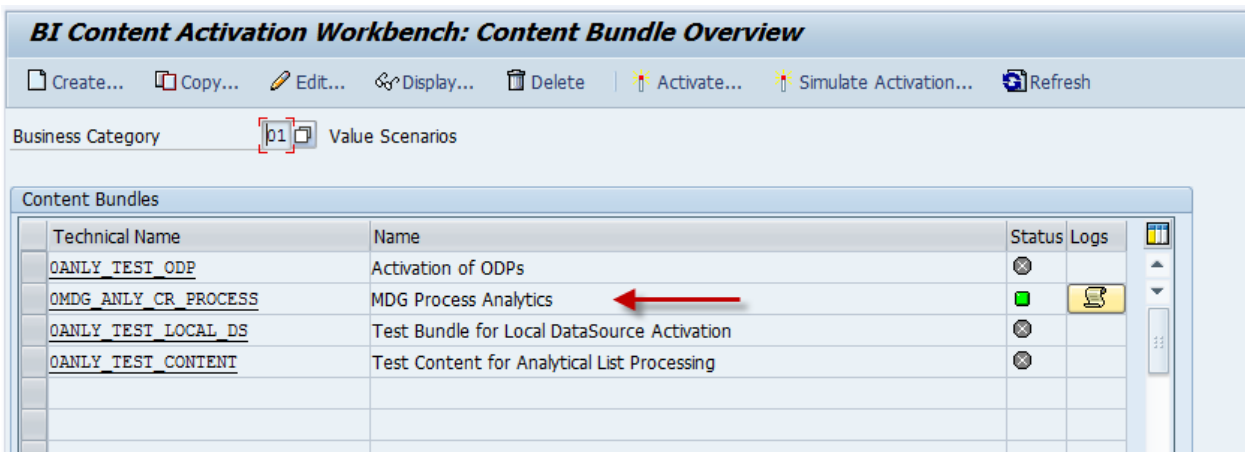
You can activate the complete BI MDG Content Bundle in the local BI client using transaction `BSANLY_BI_ACTIVATION` for the following elements:

- Content bundle `0MDG_ANLY_CR_PROCESS`
- Business Category `01`

In the local BI client on your ECC system, enter the RFC connection `NONE`.

If you need to log a ticket about BI Content activation, use the `CA-EPT-ANL-ACT` component.

Activated BI content is shown with a green traffic light in the *Status* column of the *Content Bundle Overview* of the *BI Content Activation Workbench*. You can access the relevant logs from the *Logs* column.



Logs	Date	Time	User	Activation Status	RFC Destina..	Numb...
Available	15.02.2012	12:15:48	C5147367	Activation finished	QV6CLNT004	1
Available	13.02.2012	11:46:53	C5147367	Activation finished	QV6CLNT004	2
Available	25.01.2012	10:51:22	ORTHG	Activation finished	QV6CLNT004	3

4.3 Configure Processing Time (Graphical View)

Information about Xcelsius Enterprise Integration can be found [Xcelsius Enterprise Integration - Integration with SAP BusinessObjects](#).

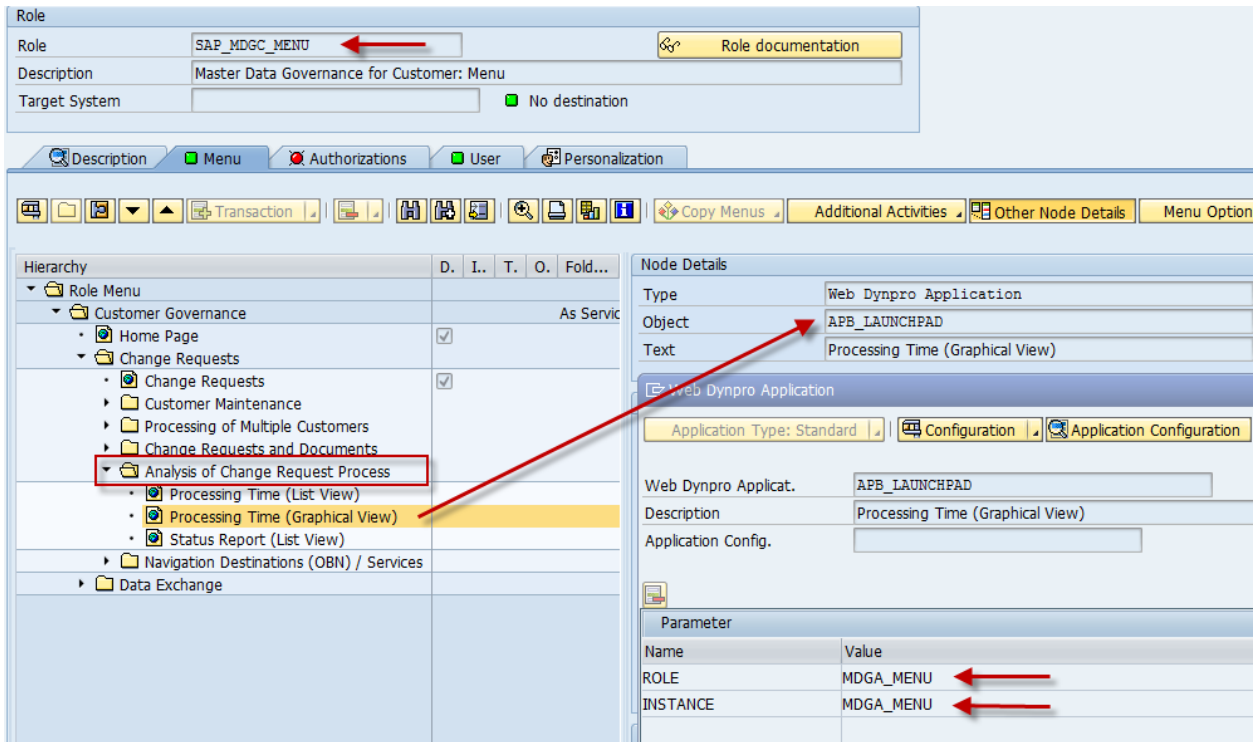
To configure the Launchpad use transaction LPT_CUST, necessary parameters are as follows:

- Role: MDGA_MENU
- Instance: MDGA_MENU

This Launchpad is configured as shown in the table.

Application Parameter	Xcelsius Dashboard	OXC_MDG_MONITOR_CR
System:	System Alias SAP_BI	For Xcelsius Dashboard, where normally the SAP_BI system alias is used, you must use a type H HTTP Connection to an ABAP System connection. The type H HTTP connection must point to the BI Enterprise Portal. If you want to start an Xcelsius Dashboard, a BI Java Portal is required. If you want to start Xcelsius Dashboard in the system/client which is the BW Master of the BI Java Portal, the SAP_BI alias is the only system alias you need because the BI Java Portal knows its BW Master.
Application-Related Parameters	Target App.Parameters	&system=QV6CLNT405 (for example)
Portal Parameters	Navigation Mode	EXT_HEAD
	History Mode	1
	Parameter Forwarding	G Get Parameters

The analysis of change requests is integrated in every MDG role (see screenshot).



5. SAP NOTES OF INTEREST

Note	Description
1646399	Additional Information / FAQ for the usage of the "BI Content Activation Workbench"
1415946	Customizing Help f. BI Content Activat. Workb. not found
1648421	Composite SAP Note for ODP (SAP NetWeaver 7.03)
830468	FAQ: Business Information Warehouse system with SAP MaxDB
1789776	Activation of Xcelsius Dashboard from BI Content in Administrator Workbench fails

© 2013 SAP AG. All rights reserved.

SAP, R/3, SAP NetWeaver, Duet, PartnerEdge, ByDesign, SAP BusinessObjects Explorer, StreamWork, SAP HANA, and other SAP products and services mentioned herein as well as their respective logos are trademarks or registered trademarks of SAP AG in Germany and other countries.

Business Objects and the Business Objects logo, BusinessObjects, Crystal Reports, Crystal Decisions, Web Intelligence, Xcelsius, and other Business Objects products and services mentioned herein as well as their respective logos are trademarks or registered trademarks of Business Objects Software Ltd. Business Objects is an SAP company.

Sybase and Adaptive Server, iAnywhere, Sybase 365, SQL Anywhere, and other Sybase products and services mentioned herein as well as their respective logos are trademarks or registered trademarks of Sybase Inc. Sybase is an SAP company.

Crossgate, m@gic EDDY, B2B 360°, and B2B 360° Services are registered trademarks of Crossgate AG in Germany and other countries. Crossgate is an SAP company.

All other product and service names mentioned are the trademarks of their respective companies. Data contained in this document serves informational purposes only. National product specifications may vary.

These materials are subject to change without notice. These materials are provided by SAP AG and its affiliated companies ("SAP Group") for informational purposes only, without representation or warranty of any kind, and SAP Group shall not be liable for errors or omissions with respect to the materials. The only warranties for SAP Group products and services are those that are set forth in the express warranty statements accompanying such products and services, if any. Nothing herein should be construed as constituting an additional warranty.

