

SAP How-To Guide for MDG-F

Enable Multi-Copy of Accounts in Company Code



Applies to

Master Data Governance for Financials (MDG-F) with release versions 7.0 and newer.. For more information, visit the Master Data Management homepage (<https://go.sap.com/community/topic/master-data-governance.html>).

Summary

SAP Master Data Governance provides out-of-the box solutions for the central management of master data objects. Domain-specific solutions include business partner (MDG-BP), customer (MDG-C), supplier (MDG-S) governance, material governance (MDG-M), and financials governance (MDG-F).

This document explains how to enable the new functionality for copying a single Account in Company Code to multiple target Accounts in Company Code. It describes the key concepts and implementation details as well as possible enhancement options.

Author(s): Michael Theis

Company: SAP SE

Created on: October 2016

Version: 1.1

Table of Contents

Applies to	1
Summary.....	1
Introduction	3
<i>MDG for Financials</i>	3
<i>Technical Information</i>	3
<i>Scenario</i>	3
Technical Background	4
Implementation	4
Step 1: Enable the Copy Functionality	5
<i>Option A: Use a Popup to Display the Selection List</i>	6
<i>Option B: Use an Edit Page to Display the Selection List</i>	7
<i>Result</i>	8
Step 2: Redefine the Preselection of Records on the Selection List	8
<i>Result</i>	8
Step 3: Redefine the Attributes to be Copied	9
<i>Result</i>	11
Additional Information	12
<i>Links</i>	12
<i>How-to Guides</i>	12
<i>SAP Notes</i>	12
<i>Version History</i>	12
Copyright.....	13

Introduction

SAP Master Data Governance (MDG) is used for embedded Master Data Management (MDM), that is, centralized, out-of-the-box, domain-specific creation, modification, and distribution of master data with a focus on SAP Business Suite.

Domain-specific content (data models, user interfaces, workflows) is provided as part of the standard for several application areas. It is a common requirement from customers to adapt the MDG data models to their specific needs.

This document explains how to enable the new functionality for copying a single Account in Company Code to multiple target Accounts in Company Code. It describes the key concepts and implementation details as well as possible enhancement options.

We recommend that you study the following how-to guide before working with the current guide:

[Extensibility Options for SAP Master Data Governance for Financial Data](#) → Overview about MDG-F

MDG for Financials

MDG offers a domain specific solution for financial governance (MDG-F). The current MDG-F data model is called 0G. It covers entity types of the accounting, controlling and consolidation components of financial master data as indicated by the examples below:

- Accounting: G/L Account (**ACCOUNT** & **ACCCDET**), Company
- Controlling: Cost Center (**CCTR**), Cost Element (**CELEM**) and Profit Center (**PCTR**)
- Consolidation: Consolidation Unit (**CONSUNIT**), Item (**FSI**)

Technical Information

The functionality is available with SAP MDG 7.0 feature pack 1 respectively support package 2.

Scenario

A common use case for Accounts in Company Code (entity type **ACCCDET**) is copying an existing company code as template to multiple company codes. SAP has implemented the required functionality in MDG-F with release 7.0 in feature pack 1. The document explains the configuration steps you apply to the MDG system to enable this feature. It describes how to change the selection of attributes you copy from the template to the target company code.

Technical Background

The feature is implemented in the user interface for Accounts. Having read the overview document [Extensibility Options for SAP Master Data Governance for Financial Data](#) → Overview about MDG-F, you already know how the user interfaces of the MDG-F solution can be enhanced. The implementation requires knowledge in this area.

Implementation

You choose from the following mutually exclusive options for displaying the selection list of target company codes:

1. Display in a popup – recommended for small lists (maximum 20 records)

A popup is rather inflexible with regards to resizing the list size and the amount of records to be displayed. Enlarging the list requires the popup to enlarge, too. This might result in several scrollbars due to the limited space for popups within the browser.

2. Display in an edit page – recommended for larger lists (more than 20 records)

An edit page is very flexible with regards to resizing the list size and the amount of records to be displayed. Nevertheless, the edit page might be unexpected to the end-user since web-pages usually call popups for similar features.

System customizing determines the list of target company codes. The chart of accounts of the related Account defines the allowed company codes. (***Transaction SPRO -> SAP Reference IMG -> Financial Accounting (New) -> General Ledger Accounting (New) -> Master Data -> G/L Accounts -> Preparations -> Assign Company Code to Chart of Accounts***). The target list excludes those company codes that are already used by Accounts in Company Code since overwriting existing records is not supported.

The multi-copy into target company codes includes copying attributes of the selected template company code. The following attributes are not copied:

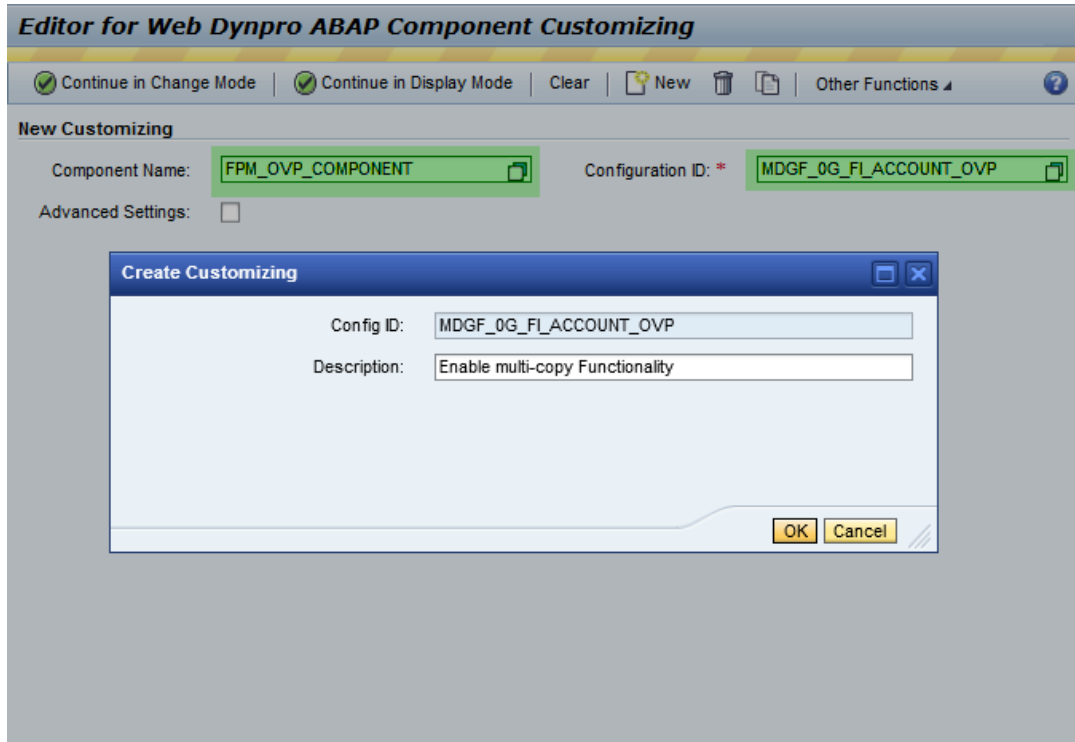
- Attachments and the currency (its value is derived from the new company code).
- Attributes that are dependent on the new company code since the related customizing tables use the company code as foreign key. Examples of such attributes are as follows:
 - ***Alternative Account Number, House Bank and House Bank Account ID***
 - ***Inflation Key, Tax Category and Tolerance Group***

The document describes how to ensure the attributes to be copied are defined according to your project needs.

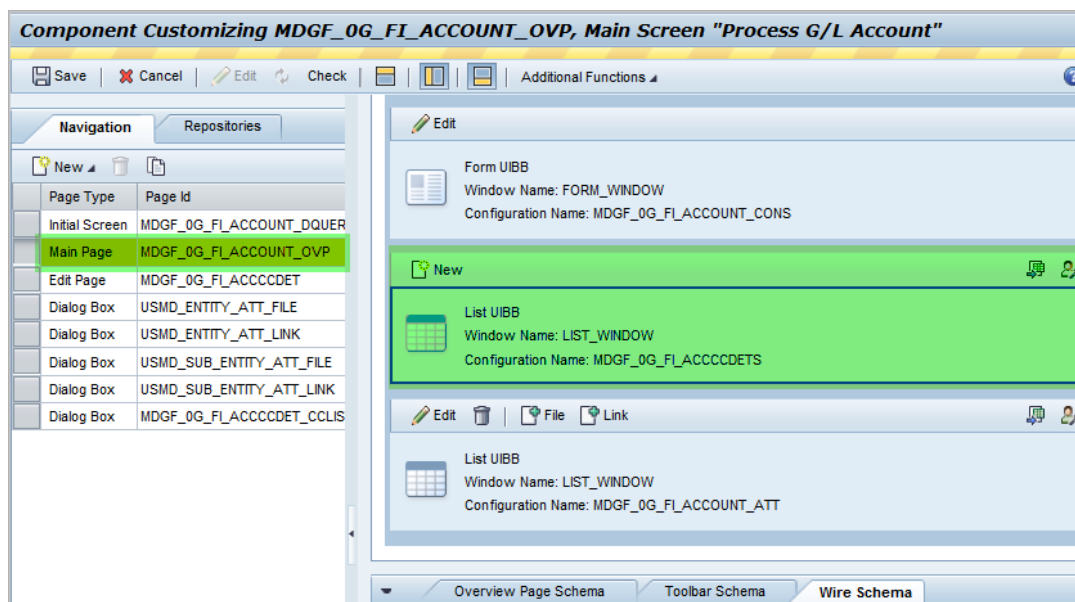
Step 1: Enable the Copy Functionality

The functionality is enabled by adding a new button on the list UIBB for **Accounts** in **Company Codes** in the overview page for **Accounts (MDGF_0G_FI_ACCOUNT_OVP)**. It is recommended to use the customizing capabilities of FPM. Therefore, create a new or use an existing customizing of the overview page.

1. Start the component customizing configurator for the overview page.

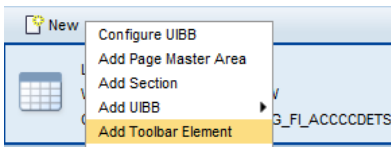


2. Locate the list UIBB for Accounts in Company Code on the main page of the overview page.

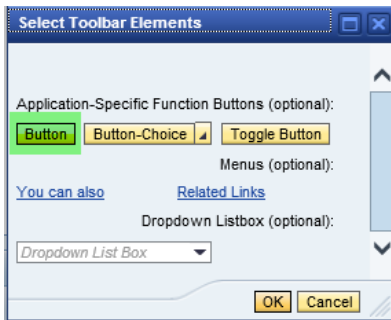


Option A: Use a Popup to Display the Selection List

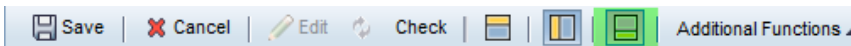
1. Create a new button.
 - a. Right-click the UIBB toolbar next to the **New** button and choose **Add Toolbar Element** from the context menu.



- b. Choose the toolbar element **Button** in the popup.



- c. Locate the **Attributes of Element: Button screen**. You might have to enable the Attributes section using the top menu bar.



- d. Maintain the attributes of the button as defined below. Do not change other attributes that are not mentioned explicitly.

- i. **Text:** Copy
- ii. **Image Source:** ~Icon/Copy
- iii. **FPM Event ID:** Use the F4 Help to select MDGF_ACCCCDET_COPY

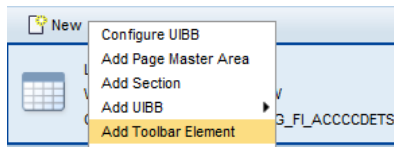
Attributes of Element: Copy		Final Flags	
Standard Attributes			
Element ID:	ACTION_ID_1_CUS_	Explanation Text:	
Display Type:	Button	Enabled:	<input checked="" type="checkbox"/>
Sequence Index:	4	Visibility:	Is Visible
Text:	Copy	Alignment:	Left
Image Source:	~Icon/Copy	Add Separator:	<input type="checkbox"/>
Tooltip:			
Design:	Standard		
Hotkey:	none		
FPM Event ID:	MDGF_ACCCCDET_COPY		
Action Type:	Standard	Target Page:	
Component:	FPM_LIST_UIBB_ATS	Interface View:	LIST_WINDOW
Configuration ID:	MDGF_OG_FI_ACCCCDETS	Instance ID:	

2. Save your changes.

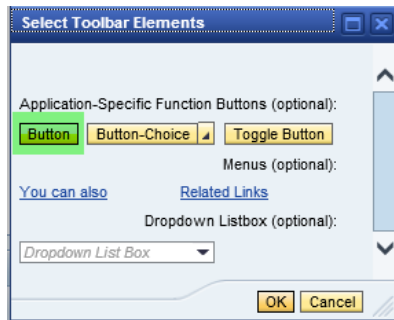
Option B: Use an Edit Page to Display the Selection List

1. Create a new button.

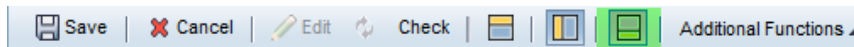
- a. Right-click the UIBB toolbar next to the **New** button and choose **Add Toolbar Element** from the context menu.



- b. Select the toolbar element **Button** in the popup.



- c. Locate the **Attributes of Element: Button screen**. You might have to enable the Attributes section using the top menu bar.



- d. Maintain the attributes of the button as defined below. Do not change other attributes that are not mentioned explicitly.

- i. **Text:** Copy
- ii. **Image Source:** ~Icon/Copy
- iii. **FPM Event ID:** Use the F4 Help to select MDGF_ACCCCDET_COPY
- iv. **Target Page:** MDGF_0G_FI_ACCCCDET_CCLIST_EDIT

Attributes of Element: Copy		Final Flags
Standard Attributes		
Element ID:	ACTION_ID_1_CUS_	Explanation Text:
Display Type:	Button	Enabled:
Sequence Index:	4	Visibility:
Text:	Copy	Alignment:
Image Source:	~Icon/Copy	Add Separator:
Tooltip:		
Design:	Standard	Target Page:
Hotkey:	none	Interface View:
FPM Event ID:	MDGF_ACCCCDET_COPY	Instance ID:
Action Type:	Standard	
Component:	FPM_LIST_UIBB_ATS	
Configuration ID:	MDGF_0G_FI_ACCCCDETS	

- e. Save your changes.

Result

You have enabled the multi-copy functionality for Accounts in Company Codes.

If the button is not visible for you or some other end-users, you may have to reset the personalization of the user interface.

Step 2: Redefine the Preselection of Records on the Selection List

The copy button calls either a popup or a new edit page. Both display a selection list of target company codes. The default SAP delivery does not pre-select the records on the list. This is implemented in the list feeder class `CL_MDGF_GUIBB_FI_ACCCCDET_CC` in method `SELECT_ALL_ON_OPEN`. You can change this behavior using the ABAP code enhancement technology (step three shows some screenshots for the same).

1. Start the ABAP class builder using transaction **SE24**.
2. Navigate to class `CL_MDGF_GUIBB_FI_ACCCCDET_CC` and into method `SELECT_ALL_ON_OPEN`.
3. Enable the implicit enhancement options via the top menu bar.
 - a. Click **Edit -> Enhancement Operations -> Show Implicit Enhancement Options**.
 - b. Choose the **Enhance** button.
 - c. Locate the new line at the end of the method.
4. Create a custom enhancement.
 - a. Set the cursor into line and choose the **Create Enhancement Implementation** button.
 - b. In popup **Choose Enhancement Mode**, choose the **Code** button since the actual enhancement requires adding some new coding to the method.
 - c. In popup **Create Enhancement Implementation**, define a name and a short text for your enhancement.
 - d. The system generates an enhancement placeholder into the source code. This is the place to code your custom selection of the attributes.
5. The sample code adds the **Tax Category** as attribute to be copied and removes the **Planning Level** from the list.

```
" Enable the preselection
rv_select_all = abap_true.
```

Result

You have redefined the preselection of the records on the selection list.

Step 3: Redefine the Attributes to be Copied

SAP defines a default set of attributes that is copied from the template company code to the target company codes.

During the copy, you cannot change the **Chart of Accounts** and the **Account Number**.

The **Field Status Group** is copied since the field is always mandatory. A validation checks if the copied value is still valid for the target company code. The end user must resolve validation errors.

Attributes that are **not** copied are:

- **Attachments**
- **Account Currency**

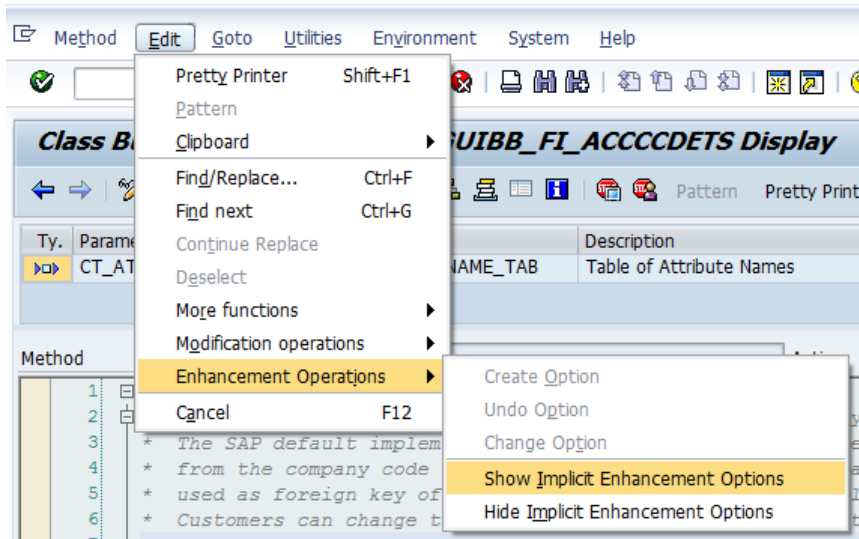
The value is derived during the copy according to the new company code automatically.

- Attributes that depend on the company code (meaning that the related customizing tables use the company code as foreign key). Where such attributes exist, the value list of the target company code might differ from the source company code. These attributes include the following:
 - **Alternative Account Number**
 - **House Bank** and **House Bank Account ID**
 - **Inflation Key**
 - **Tax Category**
 - **Tolerance Group**

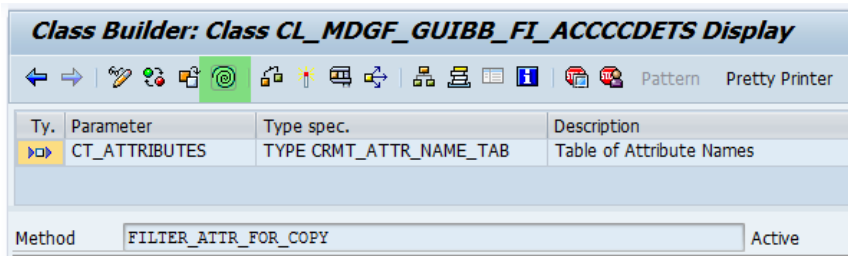
The selection of the attributes to be copied is implemented in class `CL_MDGF_GUIBB_FI_ACCCCDETS` in method `FILTER_ATTR_FOR_COPY`. The method uses a changing parameter `CT_ATTRIBUTES` that contains those attributes to be copied from the source company code to the target company code.

The following steps explain how to redefine the SAP default delivery using the ABAP code enhancement technology.

1. Start the ABAP class builder using transaction **SE24**.
2. Navigate to class `CL_MDGF_GUIBB_FI_ACCCCDETS` and into method `FILTER_ATTR_FOR_COPY`.
3. Enable the implicit enhancement options using the top menu bar.
 - a. Choose **Edit -> Enhancement Operations -> Show Implicit Enhancement Options**.



b. Choose the **Enhance** button.

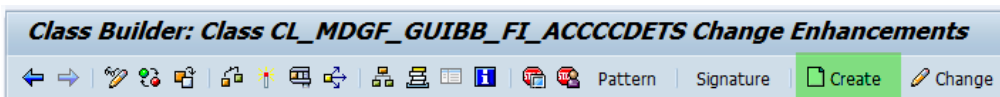


c. Locate the new line at the end of the method.



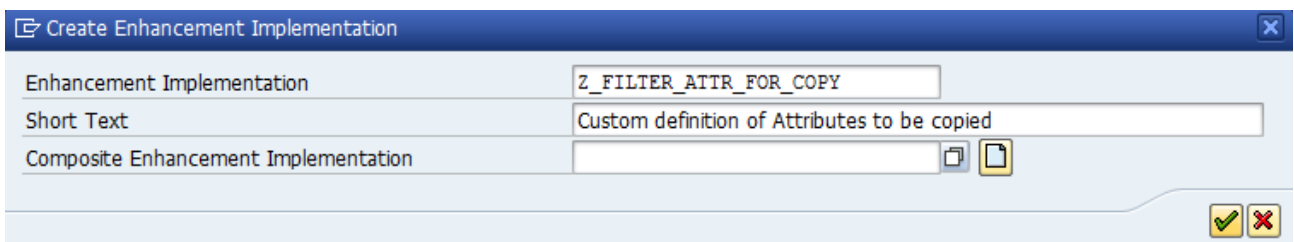
4. Create a custom enhancement.

a. Set the cursor into line and choose the **Create Enhancement Implementation** button.



b. In popup **Choose Enhancement Mode**, choose button **Code**. The actual enhancement adds new coding to the method.

c. In popup **Create Enhancement Implementation**, define a name and a short text for your enhancement.



Additional Information

Links

[ABAP Enhancement Framework](#)

[FPM on SCN](#)

[MDG Guides on Service Market Place](#)

How-to Guides

[Extensibility Options for SAP Master Data Governance for Financial Data](#)

- MDG-F Overview

SAP Notes

- [1637249](#) specifying required information for OSS support
- [2105467](#) specifying required information for Performance Issues

Version History

- 1.1 – Updated new SAP Community Links
- 1.0 – First release of the document

Copyright

© Copyright 2014-2016 SAP AG. All rights reserved.

No part of this publication may be reproduced or transmitted in any form or for any purpose without the express permission of SAP AG. The information contained herein may be changed without prior notice.

Some software products marketed by SAP AG and its distributors contain proprietary software components of other software vendors.

Microsoft, Windows, Excel, Outlook, and PowerPoint are registered trademarks of Microsoft Corporation.

IBM, DB2, DB2 Universal Database, System i, System i5, System p, System p5, System x, System z, System z10, System z9, z10, z9, iSeries, pSeries, xSeries, zSeries, eServer, z/VM, z/OS, i5/OS, S/390, OS/390, OS/400, AS/400, S/390 Parallel Enterprise Server, PowerVM, Power Architecture, POWER6+, POWER6, POWER5+, POWER5, POWER, OpenPower, PowerPC, BatchPipes, BladeCenter, System Storage, GPFS, HACMP, RETAIN, DB2 Connect, RACF, Redbooks, OS/2, Parallel Sysplex, MVS/ESA, AIX, Intelligent Miner, WebSphere, Netfinity, Tivoli and Informix are trademarks or registered trademarks of IBM Corporation.

Linux is the registered trademark of Linus Torvalds in the U.S. and other countries.

Adobe, the Adobe logo, Acrobat, PostScript, and Reader are either trademarks or registered trademarks of Adobe Systems Incorporated in the United States and/or other countries.

Oracle is a registered trademark of Oracle Corporation.

UNIX, X/Open, OSF/1, and Motif are registered trademarks of the Open Group.

Citrix, ICA, Program Neighborhood, MetaFrame, WinFrame, VideoFrame, and MultiWin are trademarks or registered trademarks of Citrix Systems, Inc.

HTML, XML, XHTML and W3C are trademarks or registered trademarks of W3C®, World Wide Web Consortium, Massachusetts Institute of Technology.

Java is a registered trademark of Oracle Corporation.

JavaScript is a registered trademark of Oracle Corporation, used under license for technology invented and implemented by Netscape.

SAP, R/3, SAP NetWeaver, Duet, PartnerEdge, ByDesign, SAP Business ByDesign, and other SAP products and services mentioned herein as well as their respective logos are trademarks or registered trademarks of SAP AG in Germany and other countries.

Business Objects and the Business Objects logo, BusinessObjects, Crystal Reports, Crystal Decisions, Web Intelligence, Xcelsius, and other Business Objects products and services mentioned herein as well as their respective logos are trademarks or registered trademarks of Business Objects S.A. in the United States and in other countries. Business Objects is an SAP company.

All other product and service names mentioned are the trademarks of their respective companies. Data contained in this document serves informational purposes only. National product specifications may vary.

These materials are subject to change without notice. These materials are provided by SAP AG and its affiliated companies ("SAP Group") for informational purposes only, without representation or warranty of any kind, and SAP Group shall not be liable for errors or omissions with respect to the materials. The only warranties for SAP Group products and services are those that are set forth in the express warranty statements accompanying such products and services, if any. Nothing herein should be construed as constituting an additional warranty.